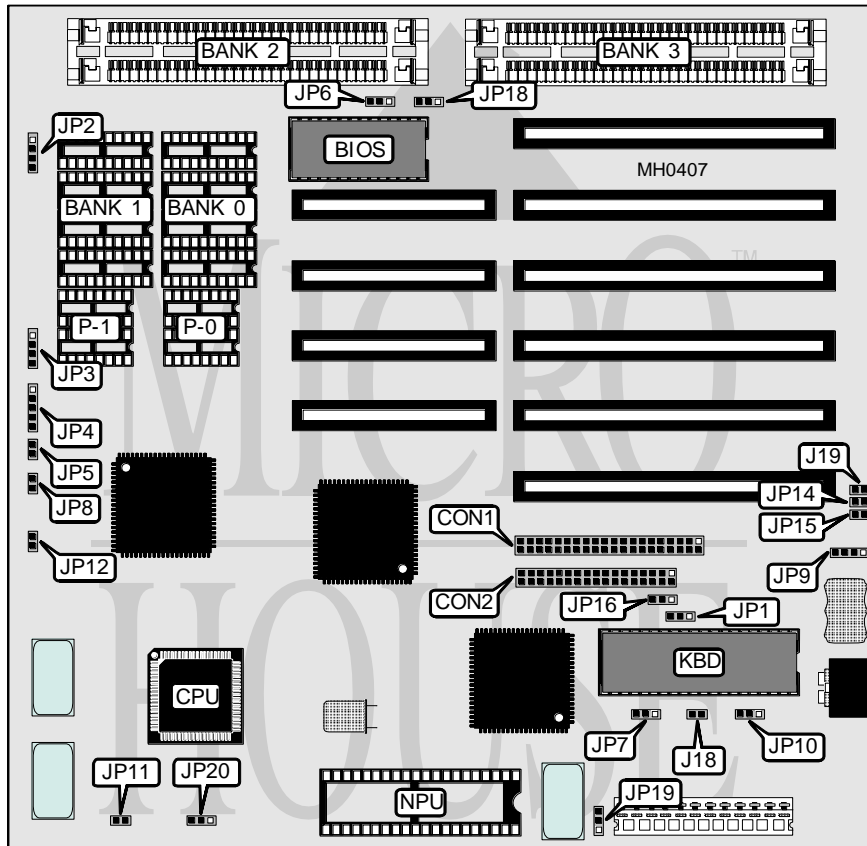


MORSE TECHNOLOGIES, INC.

KP 286HF

Processor 80286
Processor Speed 16MHz
Chip Set SUNTAC
Max. Onboard DRAM 5MB
Cache None
BIOS AMI
Dimensions 230mm x 223mm
I/O Options IDE interface, floppy drive interface
NPU Options 80287



CONNECTIONS			
Purpose	Location	Purpose	Location
IDE interface	CON1	Turbo switch	JP5
Floppy drive interface	CON2	Turbo LED	JP8
Speaker	JP2	External battery	JP9
IDE LED	JP3	Reset switch	JP12
Power LED & keylock	JP4		

Continued on next page . . .

MORSE TECHNOLOGIES, INC.

K P 2 8 6 H F

... continued from previous page

USER CONFIGURABLE SETTINGS		
Function	Jumper	Position
í Factory configured - do not alter	J18	N/A
í CMOS memory normal operation	J19	Closed
CMOS memory clear	J19	Open
í Primary floppy drive select FDD-1	JP1	Open
Primary floppy drive select FDD-2	JP1	Closed
í Factory configured - do not alter	JP6	N/A
í Factory configured - do not alter	JP7	N/A
í Primary floppy drive interface enabled	JP16	pins 1 & 2 closed
Secondary floppy drive interface enabled	JP16	pins 2 & 3 closed
í Monitor type select color	JP10	pins 2 & 3 closed
Monitor type select monochrome	JP10	pins 1 & 2 closed
í Factory configured - do not alter	JP11	open
í Factory configured - do not alter	JP18	unknown

DRAM CONFIGURATION						
Size	Bank 0	Parity (P-0)	Bank 1	Parity (P-1)	Bank 2	Bank 3
512KB	(4) 44256	(2) 41256	NONE	NONE	NONE	NONE
1MB	(4) 44256	(2) 41256	(4) 44256	(2) 41256	NONE	NONE
1.5MB	(4) 44256	(2) 41256	(4) 44256	(2) 41256	(2) 256K x 9	NONE
2MB	(4) 44256	(2) 41256	(4) 44256	(2) 41256	(2) 256K x 9	(2) 256K x 9
3MB	(4) 44256	(2) 41256	(4) 44256	(2) 41256	(2) 1M x 9	NONE
5MB	(4) 44256	(2) 41256	(4) 44256	(2) 41256	(2) 1M x 9	(2) 1M x 9

IDE CONFIGURATION		
Setting	JP14	JP15
Enabled	Closed	Closed
Disabled	Open	Open

NPU CONFIGURATION		
Setting	JP19	JP20
Asynchronous	pins 1 & 2 closed	pins 1 & 2 closed
Synchronous	pins 2 & 3 closed	pins 2 & 3 closed