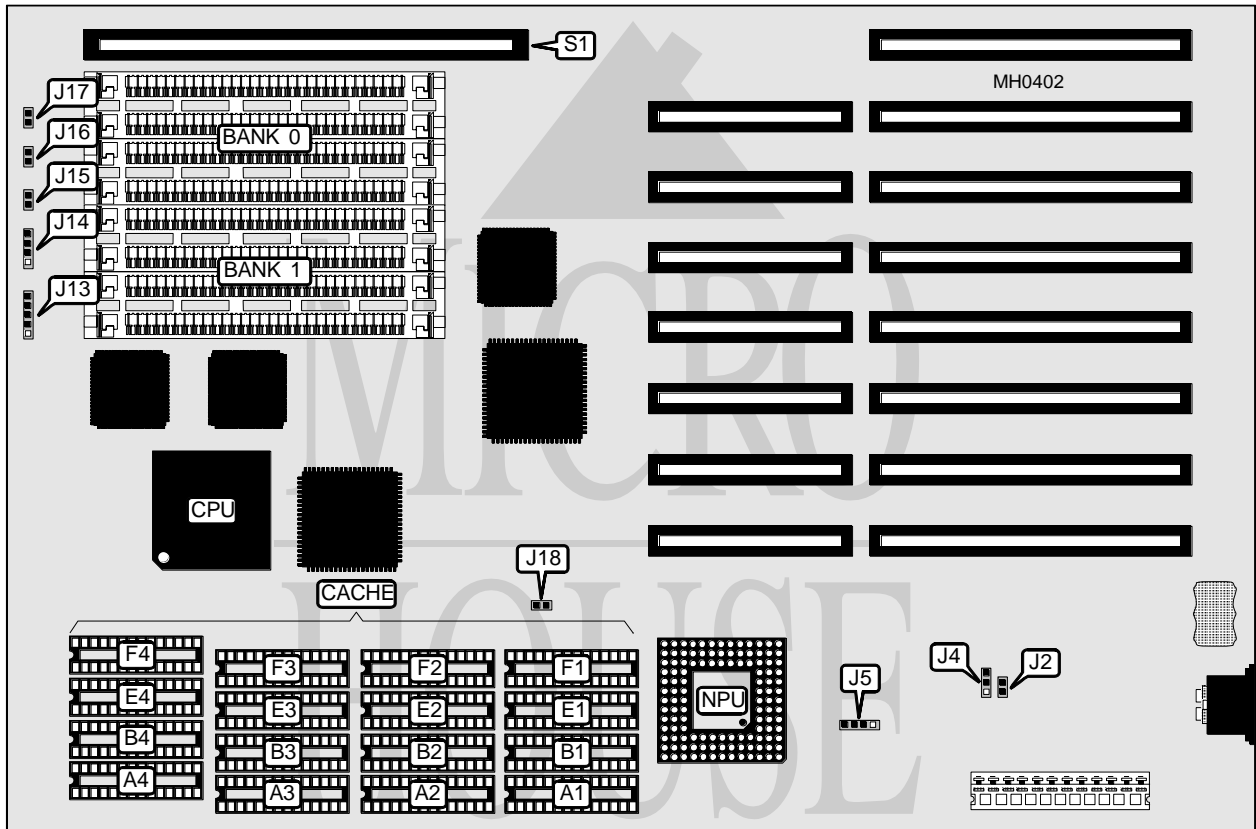


AMERICAN DIGICOM CORPORATION

386TI

Processor	80386DX
Processor Speed	33MHz
Chip Set	TI
Max. Onboard DRAM	32MB
Cache	32/64/128KB
BIOS	Quadtel
Dimensions	330mm x 218mm
I/O Options	32-bit external memory card slot
NPU Options	80387/3167



CONNECTIONS				
Purpose	Location	Purpose	Location	
External battery	J5	Turbo LED	J16	
Power LED & keylock	J13	Reset switch	J17	
Speaker	J14	32-bit external memory card	S1	
Turbo switch	J15			

Continued on next page . . .

AMERICAN DIGICOM CORPORATION

386TI

... continued from previous page

USER CONFIGURABLE SETTINGS

Function	Jumper	Position
í Monitor type select color	J2	Closed
Monitor type select monochrome	J2	Open
í CMOS memory normal operation	J4	pins 1 & 2 closed
CMOS memory clear	J4	pins 2 & 3 closed

DRAM CONFIGURATION

Size	Bank 0	Bank 1
1MB	(4) 256K x 9	NONE
2MB	(4) 256K x 9	(4) 256K x 9
4MB	(4) 1M x 9	NONE
5MB	(4) 256K x 9	(4) 1M x 9
8MB	(4) 1M x 9	(4) 1M x 9
16MB	(4) 4M x 9	NONE
17MB	(4) 256K x 9	(4) 4M x 9
20MB	(4) 1M x 9	(4) 4M x 9
32MB	(4) 4M x 9	(4) 4M x 9

CACHE CONFIGURATION

Size	Bank 0	Bank 1	Bank 2	Bank 3
32KB	(4) 8K x 8	NONE	NONE	NONE
64KB	(4) 8K x 8	NONE	(4) 8K x 8	NONE
64KB	(4) 8K x 8	(4) 8K x 8	NONE	NONE
128KB	(4) 8K x 8	(4) 8K x 8	(4) 8K x 8	(4) 8K x 8

Note: Bank 0 = A, Bank 1 = B, Bank 2 = E, & Bank 3 = F.

CACHE JUMPER CONFIGURATION

Size	J18
32KB	Open
64KB	Open
64KB	Closed
128KB	Closed