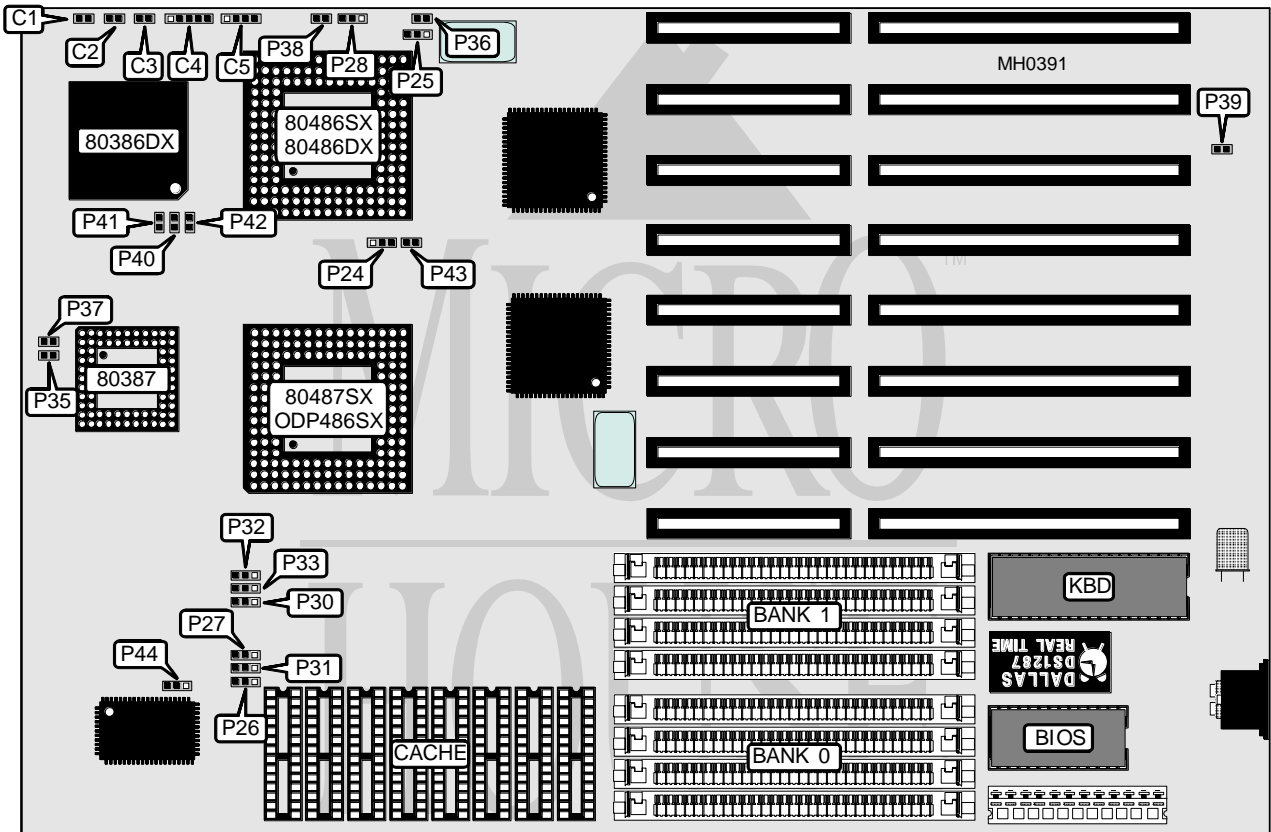


YOUNG MICROSYSTEMS, INC.

VEGA 3-486 CACHE

Processor	80386DX/80486SX/80487SX/80486DX/ODP486SX/80486DX2
Processor Speed	16/20/25/33/40/50/66(internal)MHz
Chip Set	Symphony
Max. Onboard DRAM	32MB
Cache	64/256KB
BIOS	AMI
Dimensions	330mm x 218mm
I/O Options	None
NPU Options	80387



CONNECTIONS			
Purpose	Location	Purpose	Location
Turbo switch	C1	Power LED & keylock	C4
Turbo LED	C2	Speaker	C5
Reset switch	C3		

Continued on next page . . .

YOUNG MICROSYSTEMS, INC.

VEGA 3-486 CACHE

... continued from previous page

DRAM CONFIGURATION		
Size	Bank 0	Bank 1
1MB	(4) 256K x 9	NONE
2MB	(4) 256K x 9	(4) 256K x 9
4MB	(4) 1M x 9	NONE
5MB	(4) 1M x 9	(4) 256K x 9
8MB	(4) 1M x 9	(4) 1M x 9
16MB	(4) 4M x 9	NONE
32MB	(4) 4M x 9	(4) 4M x 9

CACHE CONFIGURATION	
Size	Bank 0
64KB	(8) 8K x 8
256KB	(8) 32K x 8

CACHE JUMPER CONFIGURATION			
Size	P26	P27	P31
64KB	pins 1 & 2 closed	pins 1 & 2 closed	pins 1 & 2 closed
256KB	pins 2 & 3 closed	pins 2 & 3 closed	pins 2 & 3 closed

CPU TYPE CONFIGURATION					
Type	P24	P25	P28	P30	P32
80386DX	2 & 3	1 & 2	1 & 2	1 & 2	1 & 2
80486SX	2 & 3	2 & 3	2 & 3	2 & 3	2 & 3
80486DX-25	2 & 3	2 & 3	2 & 3	2 & 3	2 & 3
80486DX-33	2 & 3	2 & 3	2 & 3	2 & 3	2 & 3
80486DX-50	1 & 2	2 & 3	2 & 3	2 & 3	2 & 3
80486DX2-50	2 & 3	2 & 3	2 & 3	2 & 3	2 & 3
80486DX2-66	2 & 3	2 & 3	2 & 3	2 & 3	2 & 3

Note: Pins designated should be in the closed.

CPU TYPE CONFIGURATION (CON'T)					
Type	P33	P35	P36	P37	P38
80386DX	1 & 2	Closed	Closed	Open	Open
80486SX	2 & 3	Open	Open	Open	Open
80486DX-25	2 & 3	Open	Open	Open	Open
80486DX-33	2 & 3	Open	Open	Open	Open
80486DX-50	2 & 3	Open	Open	Closed	Closed
80486DX2-50	2 & 3	Open	Open	Open	Open
80486DX2-66	2 & 3	Open	Open	Open	Open

Note: Pins designated should be in the closed.

Continued on next page . . .

YOUNG MICROSYSTEMS, INC.

VEGA 3-486 CACHE

... continued from previous page

CPU TYPE CONFIGURATION (CON'T)						
Type	P39	P40	P41	P42	P43	P44
80386DX	Closed	N/A	N/A	N/A	N/A	1 & 2
80486SX	Open	Open	Open	Open	Closed	2 & 3
80486DX-25	Open	Closed	Closed	Closed	Open	2 & 3
80486DX-33	Open	Closed	Closed	Closed	Open	2 & 3
80486DX-50	Open	Closed	Closed	Closed	Open	2 & 3
80486DX2-50	Open	Closed	Closed	Closed	Open	2 & 3
80486DX2-66	Open	Closed	Closed	Closed	Open	2 & 3

Note: Pins designated should be in the closed.