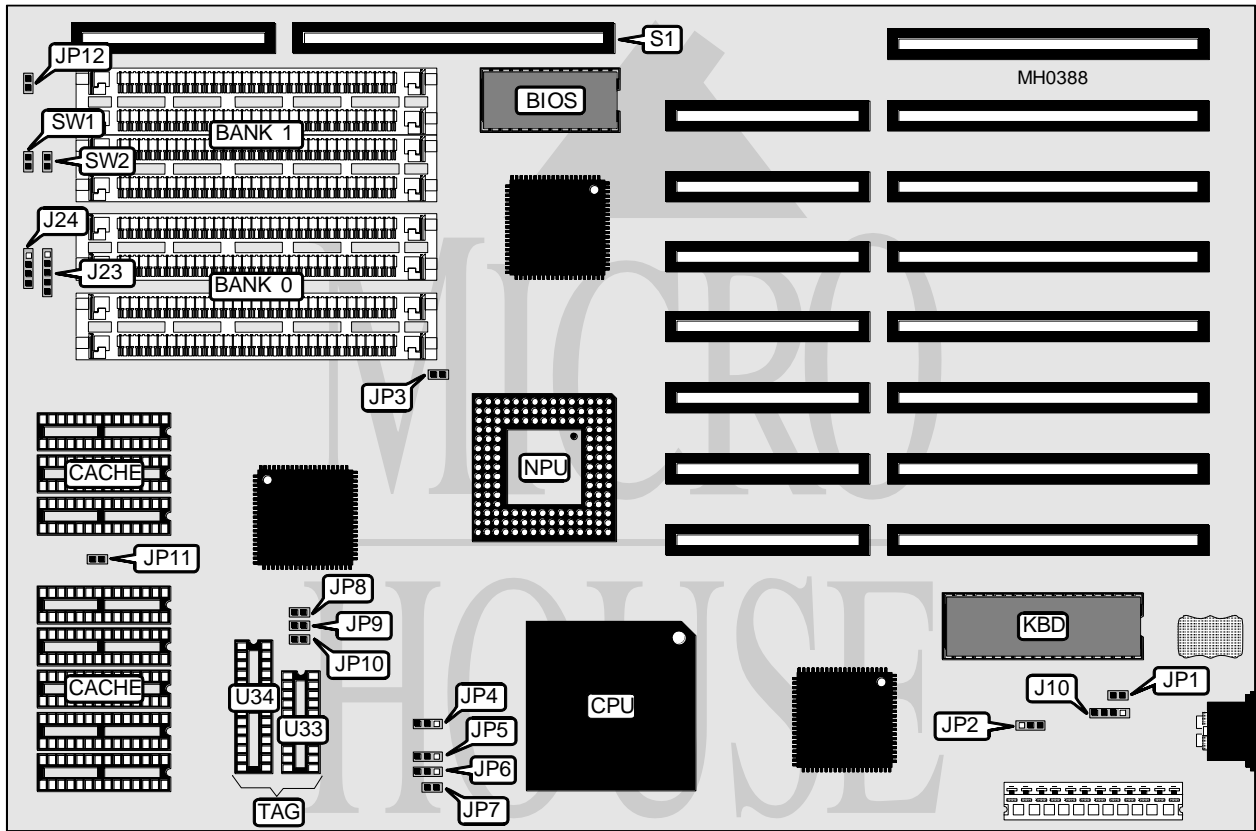


# KOUWELL ELECTRONIC CORPORATION

## KW - 420B

<b>Processor</b>	80486DX
<b>Processor Speed</b>	33MHz
<b>Chip Set</b>	OPTI
<b>Max. Onboard DRAM</b>	32MB
<b>Cache</b>	32/64/128/256KB
<b>BIOS</b>	AMI
<b>Dimensions</b>	331mm x 218mm
<b>I/O Options</b>	32-bit external memory card slot
<b>NPU Options</b>	4167



CONNECTIONS			
Purpose	Location	Purpose	Location
External battery	J10	32-bit external memory card	S1
Power LED & keylock	J23	Reset switch	SW1
Speaker	J24	Turbo switch	SW2
Turbo LED	JP12		

Continued on next page . . .

## KOUWELL ELECTRONIC CORPORATION

## K W - 4 2 0 B

... continued from previous page

USER CONFIGURABLE SETTINGS		
Function	Jumper	Position
í Monitor type select monochrome	JP1	Open
Monitor type select color	JP1	Closed
í CMOS memory normal operation (internal battery)	JP2	pins 2 & 3 closed
CMOS memory clear	JP2	pins 1 & 2 closed
CMOS memory normal operation (external battery)	JP2	Open
í Bus speed select ATCLK/4	JP3	Open
Bus speed select ATCLK/6	JP3	Closed
í Factory configured - do not alter	JP4	N/A
í Factory configured - do not alter	JP5	N/A
í Factory configured - do not alter	JP6	N/A
í Factory configured - do not alter	JP7	N/A

DRAM CONFIGURATION				
Size	Bank 0	Bank 1	Bank 2	Bank 3
4MB	(4) 1M x 9	NONE	NONE	NONE
8MB	(4) 1M x 9	(4) 1M x 9	NONE	NONE
12MB	(4) 1M x 9	(4) 1M x 9	(4) 1M x 9	NONE
16MB	(4) 1M x 9	(4) 1M x 9	(4) 1M x 9	(4) 1M x 9
16MB	(4) 4M x 9	NONE	NONE	NONE
20MB	(4) 1M x 9	(4) 4M x 9	NONE	NONE
24MB	(4) 1M x 9	(4) 1M x 9	(4) 4M x 9	NONE
28MB	(4) 4M x 9	(4) 1M x 9	(4) 1M x 9	(4) 1M x 9
32MB	(4) 4M x 9	(4) 4M x 9	NONE	NONE
36MB	(4) 1M x 9	(4) 4M x 9	(4) 4M x 9	NONE
40MB	(4) 1M x 9	(4) 1M x 9	(4) 4M x 9	(4) 4M x 9
48MB	(4) 4M x 9	(4) 4M x 9	(4) 4M x 9	NONE
52MB	(4) 1M x 9	(4) 4M x 9	(4) 4M x 9	(4) 4M x 9
64MB	(4) 4M x 9	(4) 4M x 9	(4) 4M x 9	(4) 4M x 9

Note: Banks 2 and 3 are used when 32-bit external memory card is installed at S1.

CACHE CONFIGURATION			
Size	Bank 0	TAG (U34)	Dirty Bit (U33)
64KB	(8) 8K x 8	(1) 8K x 8	(1) 64K x 1
256KB	(8) 32K x 8	(1) 32K x 8	(1) 64K x 1

CACHE JUMPER CONFIGURATION				
Size	JP8	JP9	JP10	JP11
64KB	Open	Open	Open	Open
256KB	Closed	Closed	Open	Closed