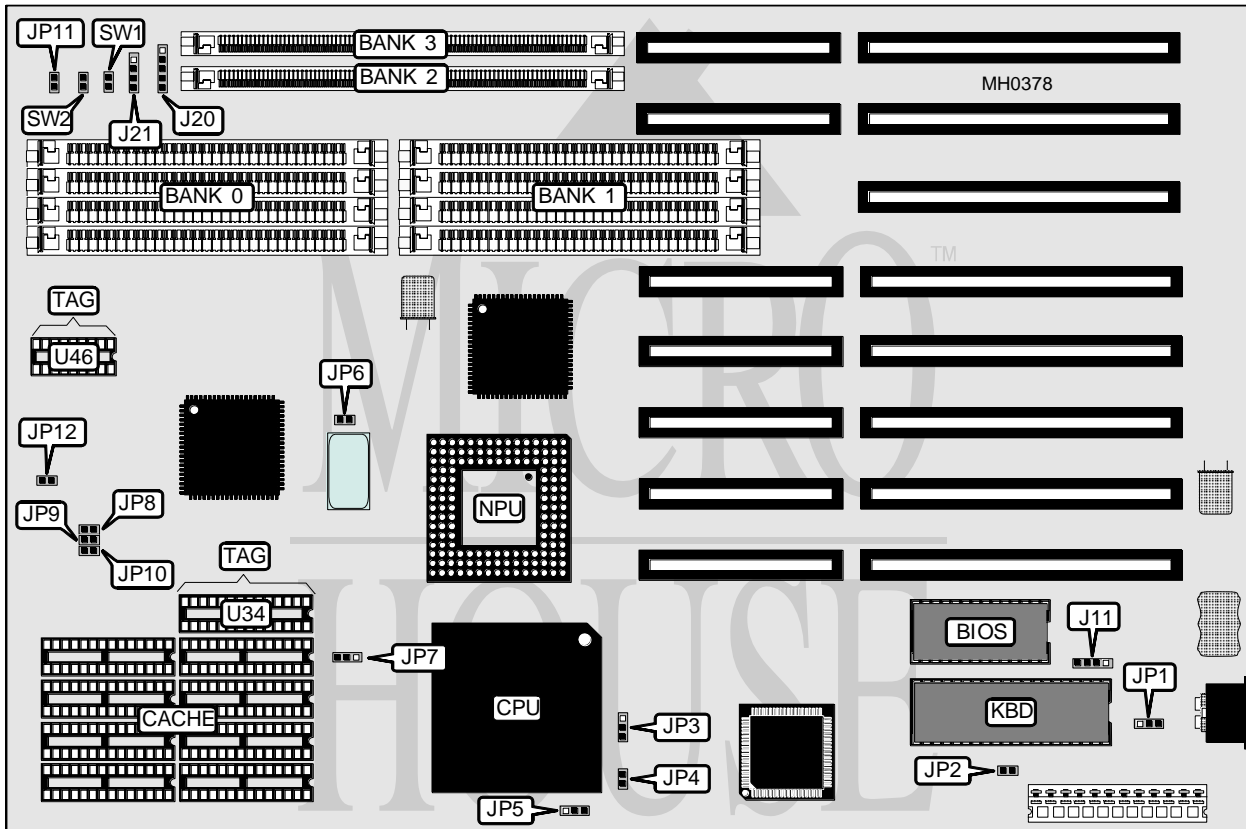


KOUWELL ELECTRONIC CORPORATION

KW - 4 2 0 C

Processor	80486SX/80486DX
Processor Speed	20/25/33MHz
Chip Set	OPTI
Max. Onboard DRAM	40MB
Cache	64/256KB
BIOS	AMI
Dimensions	331mm x 218mm
I/O Options	None
NPU Options	4167



CONNECTIONS			
Purpose	Location	Purpose	Location
External battery	J11	Turbo LED	JP11
Power LED & keylock	J20	Reset switch	SW1
Speaker	J21	Turbo switch	SW2

Continued on next page . . .

KOUWELL ELECTRONIC CORPORATION

KW - 420C

... continued from previous page

USER CONFIGURABLE SETTINGS		
Function	Jumper	Position
í CMOS memory normal operation (internal battery)	JP1	pins 2 & 3 closed
CMOS memory clear	JP1	pins 1 & 2 closed
CMOS memory normal operation (external battery)	JP1	Open
í Monitor type select monochrome	JP2	Open
Monitor type select color	JP2	Closed
í Factory configured - do not alter.	JP6	Open
í Factory configured - do not alter.	JP7	pins 2 & 3 closed

DRAM CONFIGURATION				
Size	Bank 0	Bank 1	Bank 2	Bank 3
1MB	(4) 256K x 9	NONE	NONE	NONE
2MB	(4) 256K x 9	(4) 256K x 9	NONE	NONE
4MB	(4) 1M x 9	NONE	NONE	NONE
5MB	(4) 256K x 9	(4) 1M x 9	NONE	NONE
8MB	(4) 1M x 9	(4) 1M x 9	NONE	NONE
12MB	(4) 1M x 9	(4) 1M x 9	(1) 1M x 36	NONE
16MB	(4) 1M x 9	(4) 1M x 9	(1) 1M x 36	(1) 1M x 36
16MB	(4) 4M x 9	NONE	NONE	NONE
20MB	(4) 4M x 9	(4) 1M x 9	NONE	NONE
24MB	(4) 4M x 9	(4) 1M x 9	(1) 1M x 36	NONE
28MB	(4) 4M x 9	(4) 1M x 9	(1) 1M x 36	(1) 1M x 36
32MB	(4) 4M x 9	(4) 4M x 9	NONE	NONE
36MB	(4) 4M x 9	(4) 4M x 9	(1) 1M x 36	NONE
40MB	(4) 4M x 9	(4) 4M x 9	(1) 1M x 36	(1) 1M x 36

CACHE CONFIGURATION			
Size	Bank 0	TAG (U34)	Dirty bit (U46)
64KB	(8) 8K x 8	(1) 8K x 8	(1) 64K x 1
256KB	(8) 32K x 8	(1) 32K x 8	(1) 64K x 1

CACHE JUMPER CONFIGURATION				
Size	JP8	JP9	JP10	JP12
64KB	Open	Open	Open	Open
256KB	Open	Closed	Closed	Closed

CPU TYPE CONFIGURATION			
Type	JP3	JP4	JP5
80486SX	Open	Open	pins 2 & 3 closed
80486DX	pins 2 & 3 closed	Closed	pins 1 & 2 closed