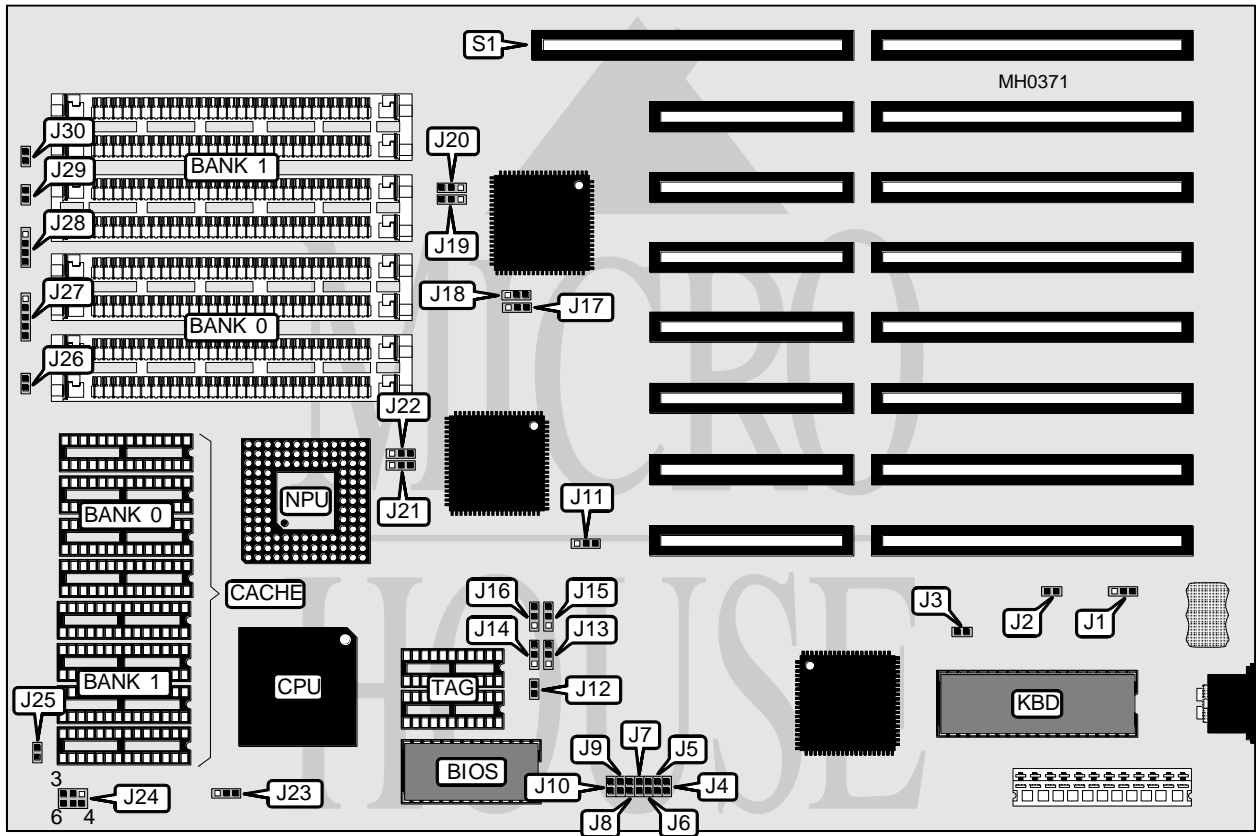


# WISEWARE COMPUTER, INC.

## ETE Q 386 33/40

<b>Processor</b>	80386DX
<b>Processor Speed</b>	33/40MHz
<b>Chip Set</b>	ETE Q
<b>Max. Onboard DRAM</b>	32MB
<b>Cache</b>	32/64/128/256KB
<b>BIOS</b>	AMI
<b>Dimensions</b>	330mm x 218mm
<b>I/O Options</b>	32-bit external memory card slot
<b>NPU Options</b>	80387/3167



CONNECTIONS			
Purpose	Location	Purpose	Location
External battery	J1	Turbo switch	J29
Reset switch	J26	Turbo LED	J30
Power LED & keylock	J27	32-bit external memory card	S1
Speaker	J28		

Continued on next page . . .

**WISEWARE COMPUTER, INC.**  
**ETE Q 386 33/40**

... continued from previous page

USER CONFIGURABLE SETTINGS		
Function	Jumper	Position
í Battery select internal	J2	open
Battery select external	J2	closed
í Monitor type select color	J3	open
Monitor type select monochrome	J3	closed
í Factory configured - do not alter	J17 (A)	pins 1 & 2 closed
í Factory configured - do not alter	J18 (A)	pins 2 & 3 closed
í Factory configured - do not alter	J19 (A)	pins 1 & 2 closed
í Factory configured - do not alter	J20 (A)	pins 2 & 3 closed
í Factory configured - do not alter	J17 (B)	pins 2 & 3 closed
í Factory configured - do not alter	J18 (B)	pins 1 & 2 closed
í Factory configured - do not alter	J19 (B)	pins 2 & 3 closed
í Factory configured - do not alter	J20 (B)	pins 1 & 2 closed
Note: Jumpers J17 - J20 settings (A) are for mainboards with chipset chip 82C492A installed. Jumpers J17 - J20 settings (B) are for mainboards with chipset chip 82C493 installed.		

DRAM CONFIGURATION				
Size	Bank 0	Bank 1	Bank 2	Bank 3
1MB	(4) 256K x 9	NONE	NONE	NONE
2MB	(4) 256K x 9	(4) 256K x 9	NONE	NONE
3MB	(4) 256K x 9	(4) 256K x 9	(4) 256K x 9	NONE
4MB	(4) 1M x 9	NONE	NONE	NONE
5MB	(4) 256K x 9	(4) 1M x 9	NONE	NONE
6MB	(4) 256K x 9	(4) 256K x 9	(4) 1M x 9	NONE
8MB	(4) 1M x 9	(4) 1M x 9	NONE	NONE
10MB	(4) 256K x 9	(4) 256K x 9	(4) 1M x 9	(4) 1M x 9
12MB	(4) 1M x 9	(4) 1M x 9	(4) 1M x 9	NONE
16MB	(4) 1M x 9	(4) 1M x 9	(4) 1M x 9	(4) 1M x 9
16MB	(4) 4M x 9	NONE	NONE	NONE
18MB	(4) 256K x 9	(4) 256K x 9	(4) 4M x 9	NONE
24MB	(4) 1M x 9	(4) 1M x 9	(4) 4M x 9	NONE
32MB	(4) 4M x 9	(4) 4M x 9	NONE	NONE
40MB	(4) 1M x 9	(4) 1M x 9	(4) 4M x 9	(4) 4M x 9
48MB	(4) 4M x 9	(4) 4M x 9	(4) 4M x 9	NONE
64MB	(4) 4M x 9	(4) 4M x 9	(4) 4M x 9	(4) 4M x 9
Note: Banks 2 & 3 are used when a 32-bit external memory card is installed at S1.				

Continued on next page ...

# WISEWARE COMPUTER, INC.

## ETE Q 386 33/40

... continued from previous page

CACHE CONFIGURATION			
Size	Bank 0	Bank 1	TAG
32KB	(4) 8K x 8	NONE	(2) 16K x 4
64KB	(4) 8K x 8	(4) 8K x 8	(2) 16K x 4
128KB	(4) 32K x 8	NONE	(2) 16K x 4
256KB	(4) 32K x 8	(4) 32K x 8	(2) 16K x 4

CACHE JUMPER CONFIGURATION									
Size	J11	J12	J13	J14	J15	J16	J23	J24	J25
32KB	1 & 2	Open	1 & 2	1 & 2	1 & 2	1 & 2	1 & 2	2 & 3	Open
64KB	2 & 3	Closed	1 & 2	1 & 2	1 & 2	1 & 2	1 & 2	1 & 2	Open
128KB	2 & 3	Closed	1 & 2	2 & 3	1 & 2	2 & 3	1 & 2	4 & 5	Closed
256KB	2 & 3	Closed	2 & 3	2 & 3	2 & 3	2 & 3	2 & 3	5 & 6	Closed

Note: Pins designated should be in the closed position.

NPU JUMPER CONFIGURATION							
NPU	J4	J5	J6	J7	J8	J9	J10
80387	Open	Open	Open	Open	Closed	Open	Open
3167	Open	Open	Open	Open	Open	Closed	Open
Disabled	Open	Open	Open	Open	Open	Open	Open
Disabled	Closed	Closed	Closed	Closed	Closed	Closed	Closed

NPU JUMPER CONFIGURATION		
Type	J21	J22
Synchronous	pins 1 & 2 closed	pins 1 & 2 closed
Asynchronous	pins 2 & 3 closed	pins 2 & 3 closed