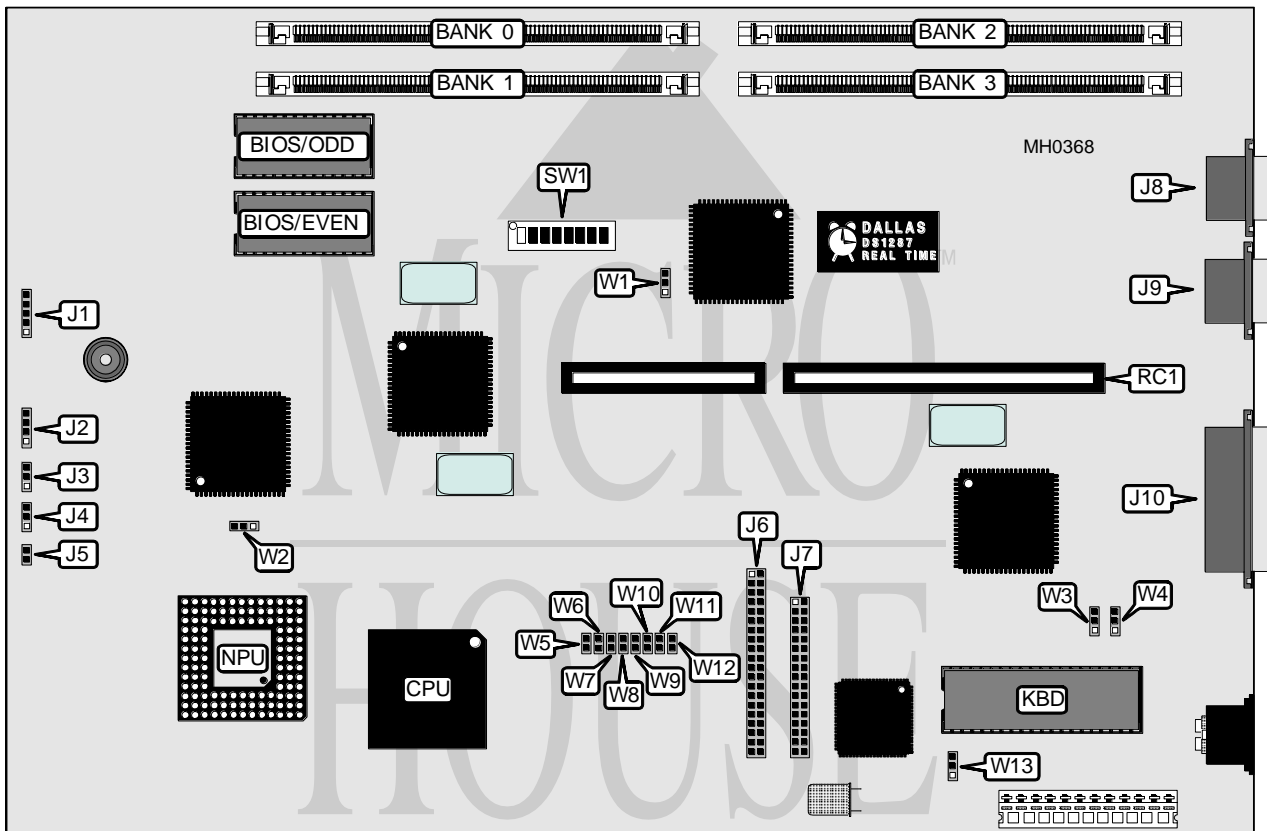


# DTK COMPUTER, INC.

## PEM - 2561D (S)

<b>Processor</b>	80386DX
<b>Processor Speed</b>	25MHz
<b>Chip Set</b>	DTK/SIS
<b>Max. Onboard DRAM</b>	16MB
<b>Cache</b>	None
<b>BIOS</b>	DTK
<b>Dimensions</b>	330mm x 218mm
<b>I/O Options</b>	Parallel port, serial ports (2), floppy drive interface, IDE interface
<b>NPU Options</b>	80387/3167



CONNECTIONS			
Purpose	Location	Purpose	Location
Power LED & keylock	J1	Floppy drive interface	J7
IDE interface LED	J2	Serial port 1	J9
Turbo LED	J4	Serial port 2	J8
Reset switch	J5	Parallel port	J10
IDE interface	J6	Riser card	RC1

Continued on next page . . .

# DTK COMPUTER, INC.

## P E M - 2 5 6 1 D

... continued from previous page

USER CONFIGURABLE SETTINGS		
Function	Jumper/Switch	Position
í CPU speed select fast	J3	Open
CPU speed select slow	J3	pins 1 & 2 closed
CPU speed switchable from keyboard	J3	pins 2 & 3 closed
í Bus speed select fast	SW1/7	Off
Bus speed select slow	SW1/7	On
í DRAM page mode/page-interleave select auto	SW1/8	On
DRAM page mode/page-interleave mode select page	SW1/8	Off
í Parallel port interrupt select IRQ7	W1	pins 1 & 2 closed
Parallel port interrupt select IRQ5	W1	pins 2 & 3 closed
í NPU disabled	W2	pins 1 & 2 closed
NPU enabled	W2	pins 2 & 3 closed
í Serial port 1 interrupt select IRQ4	W3	pins 2 & 3 closed
Serial port 1 interrupt select IRQ3	W3	pins 1 & 2 closed
í Serial port 2 interrupt select IRQ3	W4	pins 1 & 2 closed
Serial port 2 interrupt select IRQ4	W4	pins 2 & 3 closed
í Floppy drive interface enabled	W5	Closed
Floppy drive interface disabled	W5	Open
í IDE interface disabled	W12	Open
IDE interface enabled	W12	Closed
í Monitor type select monochrome	W13	pins 1 & 2 closed
Monitor type select color	W13	pins 2 & 3 closed

DRAM CONFIGURATION				
Size	Bank 0	Bank 1	Bank 2	Bank 3
1MB	(1) 256K x 36	NONE	NONE	NONE
2MB	(1) 256K x 36	(1) 256K x 36	NONE	NONE
3MB	(1) 256K x 36	(1) 256K x 36	(1) 256K x 36	NONE
4MB	(1) 256K x 36	(1) 256K x 36	(1) 256K x 36	(1) 256K x 36
4MB	(1) 1M x 36	NONE	NONE	NONE
5MB	(1) 1M x 36	(1) 256K x 36	NONE	NONE
6MB	(1) 256K x 36	(1) 256K x 36	(1) 1M x 36	NONE
7MB	(1) 256K x 36	(1) 256K x 36	(1) 1M x 36	(1) 256K x 36
8MB	(1) 1M x 36	(1) 1M x 36	NONE	NONE
9MB	(1) 1M x 36	(1) 1M x 36	(1) 256K x 36	NONE
10MB	(1) 1M x 36	(1) 1M x 36	(1) 256K x 36	(1) 256K x 36
12MB	(1) 1M x 36	(1) 1M x 36	(1) 1M x 36	NONE
13MB	(1) 1M x 36	(1) 1M x 36	(1) 1M x 36	(1) 256K x 36
16MB	(1) 1M x 36	(1) 1M x 36	(1) 1M x 36	(1) 1M x 36

Continued on next page...

**DTK COMPUTER, INC.**  
**P E M - 2 5 6 1 D**

... continued from previous page

DRAM SWITCH CONFIGURATION				
Size	SW1/1	SW1/2	SW1/3	SW1/4
1MB	Off	On	On	On
2MB	On	Off	On	On
3MB	Off	Off	On	On
4MB	On	On	Off	On
4MB	Off	Off	Off	Off
5MB	Off	On	Off	On
6MB	On	Off	Off	On
7MB	Off	Off	Off	On
8MB	On	On	On	Off
9MB	Off	On	On	Off
10MB	On	Off	On	Off
12MB	On	On	Off	Off
13MB	Off	On	Off	Off
16MB	On	On	On	On

DRAM WAIT STATE CONFIGURATION			
Wait state	Read state	SW1/5	SW1/6
1	2	On	Off
1	3	Off	On
2	3	On	On

PARALLEL PORT CONFIGURATION		
Setting	W6	W7
LPT1	Closed	Closed
LPT2	Open	Open
Disabled	Open	Closed
Disabled	Closed	Open

SERIAL PORT 1 CONFIGURATION		
Setting	W6	W7
COM1	Closed	Closed
COM3	Open	Open
Disabled	Open	Closed
Disabled	Closed	Open

SERIAL PORT 2 CONFIGURATION		
Setting	W6	W7
COM2	Closed	Closed
COM4	Open	Open
Disabled	Open	Closed
Disabled	Closed	Open