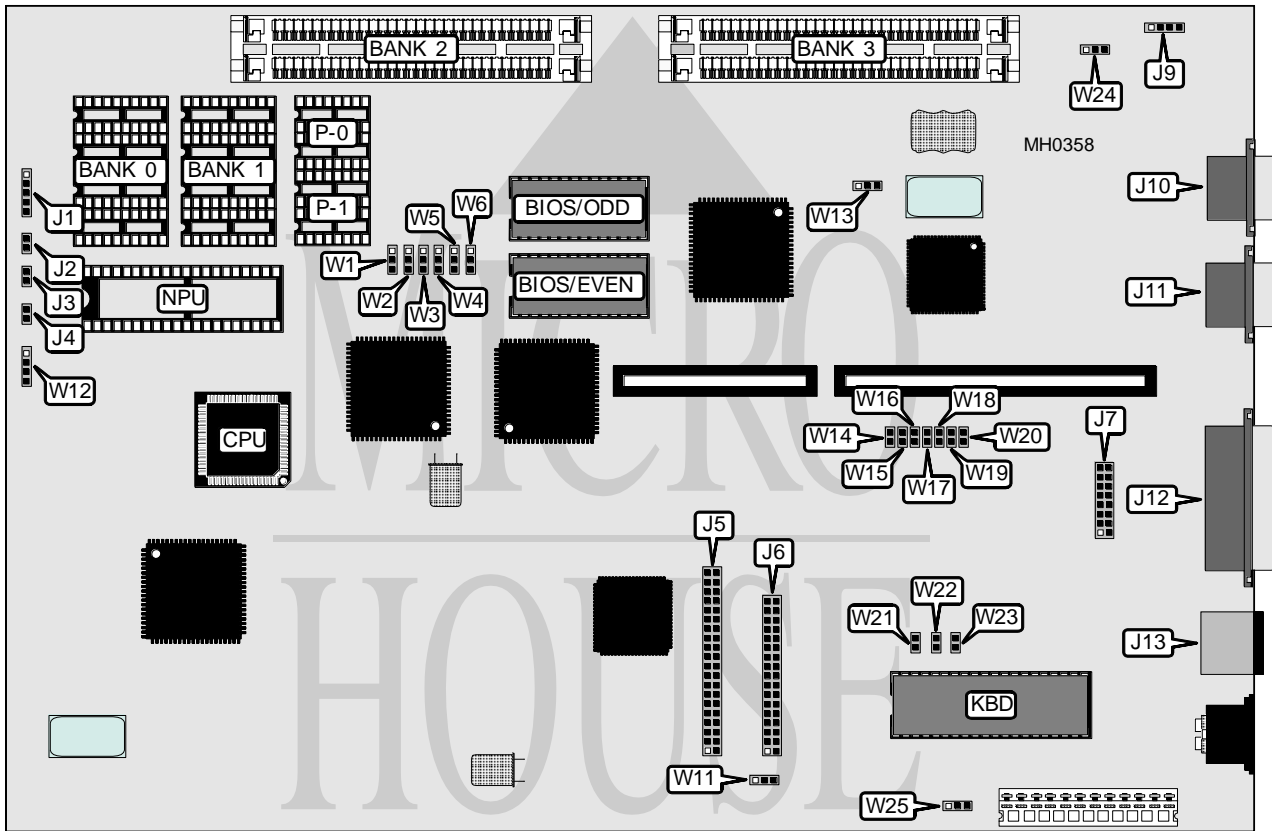


DTK COMPUTER, INC.

PTM - 1261C/1661C

Processor	80286
Processor Speed	12/16MHz
Chip Set	C & T
Max. Onboard DRAM	5MB
Cache	None
BIOS	DTK
Dimensions	333mm x 222mm
I/O Options	Floppy drive interface, game port, IDE interface, parallel port, PS/2 mouse interface, serial ports (2)
NPU Options	80287



CONNECTIONS			
Purpose	Location	Purpose	Location
Power LED & keylock	J1	External battery	J9
Turbo LED	J2	Serial port 2	J10
Reset switch	J3	Serial port 1	J11
Turbo switch	J4	Parallel port	J12
IDE interface	J5	PS/2 mouse interface	J13
Floppy drive interface	J6	IDE interface LED	W12
Game port	J7		

Continued on next page . . .

DTK COMPUTER, INC.
P T M - 1 6 6 1 C

... continued from previous page

USER CONFIGURABLE SETTINGS		
Function	Jumper	Position
í IDE type select new standard	W11	pins 2 & 3 closed
IDE type select original standard (i.e., CP-342)	W11	pins 1 & 2 closed
í Floppy drive interface (J6) enabled	W14	Closed
Floppy drive interface (J6) disabled	W14	Open
í IDE interface enabled	W21	Closed
IDE interface disabled	W21	Open
í Game port enabled	W22	Closed
Game port disabled	W22	Open
í Monitor type select monochrome	W23	Open
Monitor type select color	W23	Closed
í Battery select internal	W24	pins 2 & 3 closed
Battery select external	W24	pins 1 & 2 closed
í Power good signal detect from power supply	W25	pins 2 & 3 closed
Power good signal detect from board	W25	pins 1 & 2 closed

DRAM CONFIGURATION						
Size	Bank 0	P-0	Bank 1	P-1	Bank 2	Bank 3
512KB	(4) 44256	(2) 41256	NONE	NONE	NONE	NONE
640KB	(4) 44256	(2) 41256	(2) 64K x 9	NONE	NONE	NONE
1MB	(4) 44256	(2) 41256	(4) 44256	(2) 41256	NONE	NONE
1.5MB	(4) 44256	(2) 41256	(4) 44256	(2) 41256	(2) 256K x 9	NONE
2MB	(4) 44256	(2) 41256	(4) 44256	(2) 41256	(2) 256K x 9	(2) 256K x 9
2MB	NONE	NONE	NONE	NONE	(2) 1M x 9	NONE
3MB	(4) 44256	(2) 41256	(4) 44256	(2) 41256	(2) 1M x 9	NONE
4MB	NONE	NONE	NONE	NONE	(2) 1M x 9	(2) 1M x 9
5MB	(4) 44256	(2) 41256	(4) 44256	(2) 41256	(2) 1M x 9	(2) 1M x 9

DRAM JUMPER CONFIGURATION						
Size	W1	W2	W3	W4	W5	W6
512KB	1 & 2	1 & 2	1 & 2	1 & 2	1 & 2	1 & 2
640KB	1 & 2	1 & 2	1 & 2	1 & 2	1 & 2	1 & 2
1MB	1 & 2	1 & 2	1 & 2	1 & 2	1 & 2	1 & 2
1.5MB	2 & 3	2 & 3	2 & 3	2 & 3	2 & 3	2 & 3
2MB	2 & 3	2 & 3	2 & 3	2 & 3	2 & 3	2 & 3
2MB	1 & 2	1 & 2	1 & 2	1 & 2	1 & 2	1 & 2
3MB	2 & 3	2 & 3	2 & 3	2 & 3	2 & 3	2 & 3
4MB	1 & 2	1 & 2	1 & 2	1 & 2	1 & 2	1 & 2
5MB	2 & 3	2 & 3	2 & 3	2 & 3	2 & 3	2 & 3

Notes: Pins designated should be in the closed position.

Continued on next page ...

DTK COMPUTER, INC.

PTM - 1661C

... continued from previous page

PARALLEL PORT CONFIGURATION			
Setting	W13	W19	W20
LPT1	pins 1 & 2 closed	Closed	Closed
LPT2	pins 2 & 3 closed	Open	Open
Disabled	N/A	Open	Closed
Disabled	N/A	Closed	Open

SERIAL PORT 1 CONFIGURATION			
Setting	W13	W15	W16
COM1	pins 1 & 2 closed	Closed	Closed
COM3	pins 2 & 3 closed	Open	Open
Disabled	N/A	Open	Closed
Disabled	N/A	Closed	Open

SERIAL PORT 2 CONFIGURATION			
Setting	W13	W17	W18
COM2	pins 1 & 2 closed	Closed	Closed
COM4	pins 2 & 3 closed	Open	Open
Disabled	N/A	Open	Closed
Disabled	N/A	Closed	Open