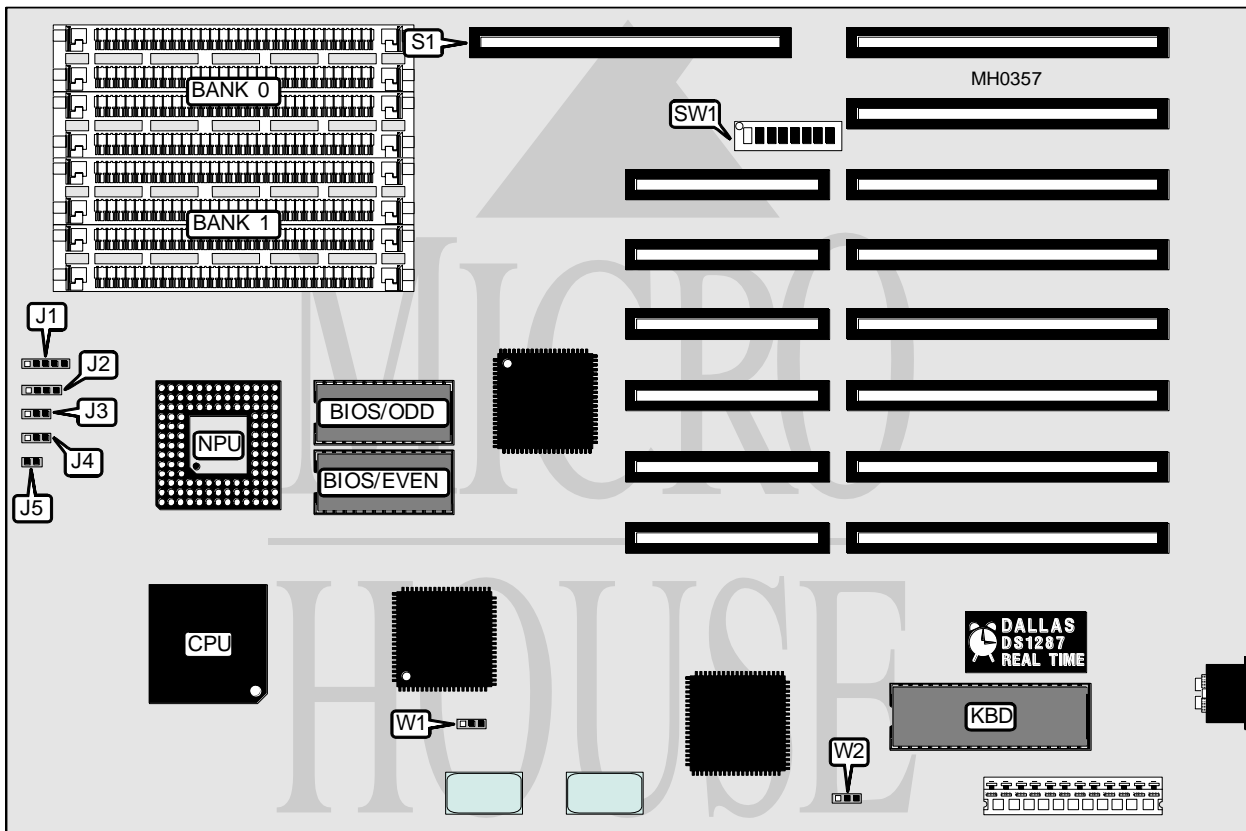


DTK COMPUTER, INC.

P E M - 2 5 3 1 D

| | |
|--------------------------|--|
| Processor | 80386DX |
| Processor Speed | 25MHz |
| Chip Set | DTK |
| Max. Onboard DRAM | 16MB (8MB on external memory card) |
| Cache | None |
| BIOS | DTK |
| Dimensions | 333mm x 222mm |
| I/O Options | 32-bit external memory card slot (PEI-307) |
| NPU Options | 80387/3167 |



| CONNECTIONS | | | |
|---------------------|----------|-----------------------------|----------|
| Purpose | Location | Purpose | Location |
| Power LED & keylock | J1 | Turbo switch | J4 |
| Speaker | J2 | Reset switch | J5 |
| Turbo LED | J3 | 32-bit external memory card | S1 |

Continued on next page . . .

DTK COMPUTER, INC.
P E M - 2 5 3 1 D

... continued from previous page

| USER CONFIGURABLE SETTINGS | | |
|---|---------------|-------------------|
| Function | Jumper/Switch | Position |
| í CPU speed select fast | J4 | Open |
| CPU speed select slow | J4 | pins 1 & 2 closed |
| CPU speed select switchable from keyboard | J4 | pins 2 & 3 closed |
| í NPU disabled | W1 | pins 2 & 3 closed |
| NPU enabled | W1 | pins 1 & 2 closed |
| í Monitor type select monochrome | W2 | pins 1 & 2 closed |
| Monitor type select color | W2 | pins 2 & 3 closed |
| í Bus speed select CPU/2 | SW1/7 | Off |
| Bus speed select CPU/4 | SW1/7 | On |

| DRAM CONFIGURATION | | |
|--------------------|--------------|--------------|
| Size | Bank 0 | Bank 1 |
| 1MB | (4) 256K x 9 | NONE |
| 2MB | (4) 256K x 9 | (4) 256K x 9 |
| 4MB | (4) 1M x 9 | NONE |
| 5MB | (4) 256K x 9 | (4) 1M x 9 |
| 8MB | (4) 1M x 9 | (4) 1M x 9 |

| DRAM SWITCH CONFIGURATION | | | | | |
|---------------------------|-------|-------|-------|-------|-------|
| Size | SW1/1 | SW1/2 | SW1/3 | SW1/4 | SW1/8 |
| 1MB | Off | On | On | On | Off |
| 2MB | On | Off | On | On | On |
| 4MB | Off | Off | Off | Off | Off |
| 5MB | Off | On | Off | On | Off |
| 8MB | On | On | On | Off | On |

| DRAM WAIT STATE CONFIGURATION | | | |
|-------------------------------|------------|-------|-------|
| Wait state | Read state | SW1/5 | SW1/6 |
| 1 | 3 | Off | On |
| 1 | 2 | On | Off |
| 2 | 3 | On | On |