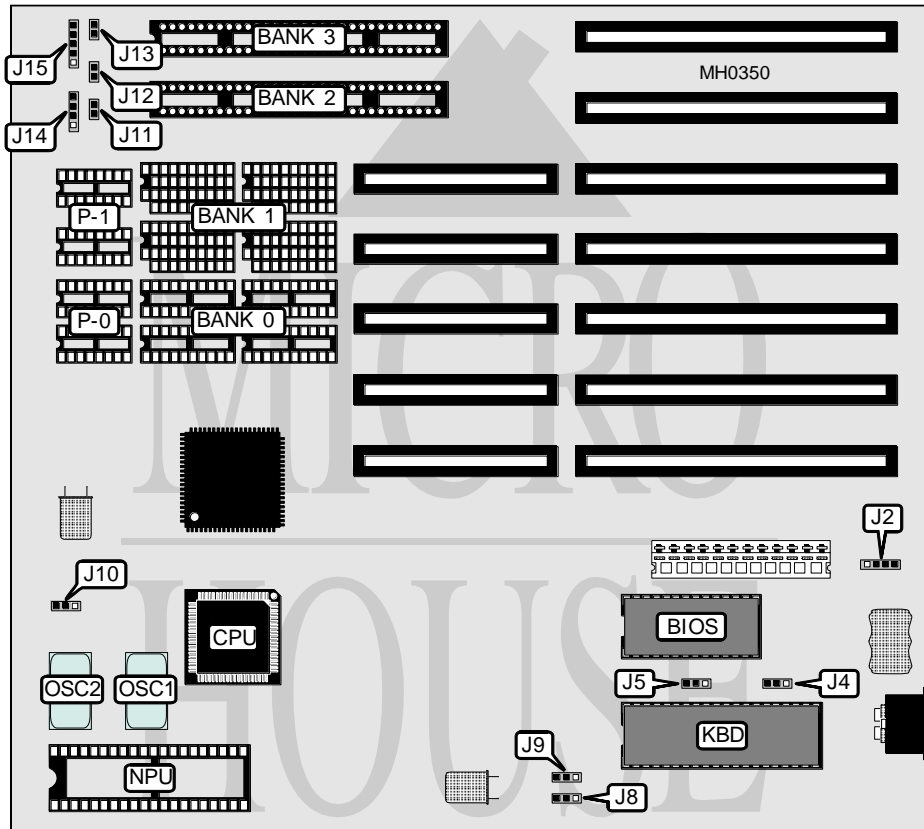


WISEWARE COMPUTER, INC.

CM - 252

Processor 80286
Processor Speed 12/16MHz
Chip Set C & T
Max. Onboard DRAM 4MB
Cache None
BIOS AMI
Dimensions 243mm x 218mm
I/O Options None
NPU Options 80287



CONNECTIONS			
Purpose	Location	Purpose	Location
Turbo LED	J11	Speaker	J14
Turbo switch	J12	Power LED & keylock	J15
Reset switch	J13		

Continued on next page . . .

WISEWARE COMPUTER, INC.
CM - 252

... continued from previous page

USER CONFIGURABLE SETTINGS		
Function	Jumper	Position
í Power good signal detect from power supply	J2	pins 2 & 3 closed
Power good signal detect from board	J2	pins 1 & 2 closed
í Factory configured - do not alter	J4	N/A
í Monitor type select color	J5	pins 2 & 3 closed
Monitor type select monochrome	J5	pins 1 & 2 closed
í Factory configured - do not alter	J8	N/A
í Factory configured - do not alter	J9	N/A
í NPU clock select iOSC	J10	Closed
NPU clock select external OSC	J10	Open

DRAM CONFIGURATION						
Size	Bank 0	P-0	Bank 1	P-1	Bank 2	Bank 3
512KB	(4) 44256	(2) 41256	NONE	NONE	NONE	NONE
512KB	NONE	NONE	NONE	NONE	(2) 256K x 9	NONE
640KB	(4) 44256	(2) 41256	(4) 4464	(2) 4164	NONE	NONE
1MB	(4) 44256	(2) 41256	(4) 44256	(2) 41256	NONE	NONE
1MB	NONE	NONE	NONE	NONE	(2) 256K x 9	(2) 256K x 9
2MB	NONE	NONE	NONE	NONE	(2) 1M x 9	NONE
4MB	NONE	NONE	NONE	NONE	(2) 1M x 9	(2) 1M x 9