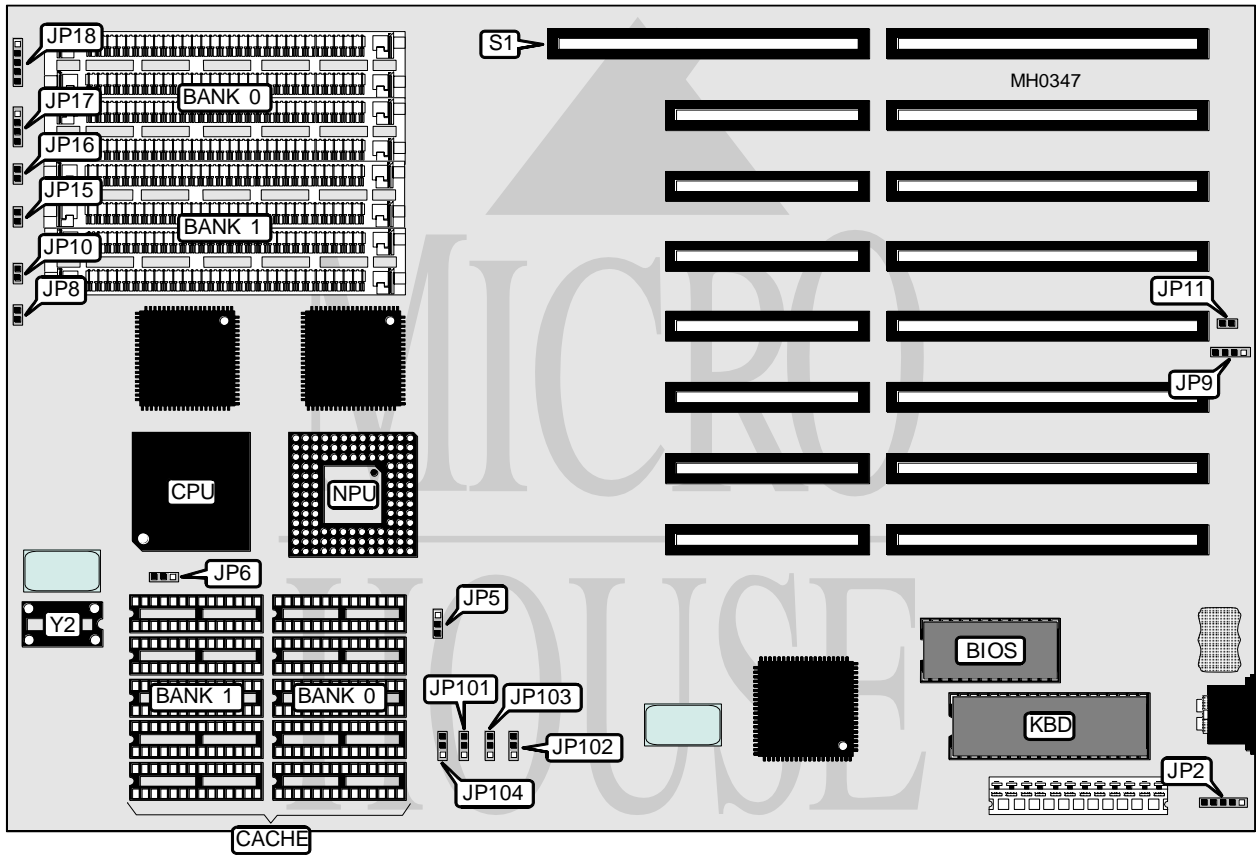


GOLDSTAR ELECTRONICS INTERNATIONAL, INC.

GS386

Processor	80386DX
Processor Speed	33/40MHz
Chip Set	Forex
Max. Onboard DRAM	32MB
SRAM Cache	32/64/128/256KB
BIOS	AMI
Dimensions	330mm x 218mm
I/O Options	32-bit external memory card slot
NPU Options	80387/3167



CONNECTIONS			
Purpose	Location	Purpose	Location
Auxiliary keyboard	JP2	Turbo LED	JP15
Reset switch	JP8	Speaker	JP17
External battery	JP9	Power LED & keylock	JP18
Turbo switch	JP10	32-bit external memory card	S1

Continued on next page . . .

GOLDSTAR ELECTRONICS INTERNATIONAL, INC.
GS386

... continued from previous page

USER CONFIGURABLE SETTINGS		
Function	Jumper	Position
í NPU mode select synchronous with CPU	JP6	pins 1 & 2 closed
NPU mode select synchronous with oscillator installed at Y2	JP6	pins 2 & 3 closed
í CMOS memory normal operation	JP11	open
CMOS memory clear	JP11	closed
í Monitor type select color	JP16	closed
Monitor type select monochrome	JP16	open

DRAM CONFIGURATION				
Size	Bank 0	Bank 1	Bank 0	Bank 1
1MB	(4) 256K x 9	NONE	NONE	NONE
2MB	(4) 256K x 9	(4) 256K x 9	NONE	NONE
4MB	(4) 1M x 9	NONE	NONE	NONE
5MB	(4) 256K x 9	(4) 1M x 9	NONE	NONE
6MB	(4) 256K x 9	(4) 256K x 9	(4) 1M x 9	NONE
8MB	(4) 1M x 9	(4) 1M x 9	NONE	NONE
9MB	(4) 256K x 9	(4) 1M x 9	(4) 1M x 9	NONE
12MB	(4) 1M x 9	(4) 1M x 9	(4) 1M x 9	NONE
16MB	(4) 1M x 9	(4) 1M x 9	(4) 1M x 9	(4) 1M x 9
16MB	(4) 4M x 9	NONE	NONE	NONE
20MB	(4) 1M x 9	(4) 4M x 9	NONE	NONE
24MB	(4) 1M x 9	(4) 1M x 9	(4) 4M x 9	NONE
32MB	(4) 4M x 9	(4) 4M x 9	NONE	NONE
36MB	(4) 1M x 9	(4) 4M x 9	(4) 4M x 9	NONE
48MB	(4) 4M x 9	(4) 4M x 9	(4) 4M x 9	NONE
64MB	(4) 4M x 9	(4) 4M x 9	(4) 4M x 9	(4) 4M x 9

Note: Banks 2 & 3 are used when a 32-bit external memory card is installed at S1.

CACHE CONFIGURATION		
Size	Bank 0	Bank 1
32KB	(5) 8K x 8	NONE
64KB	(5) 8K x 8	(5) 8K x 8
128KB	(5) 32K x 8	NONE
256KB	(5) 32K x 8	(5) 32K x 8

CACHE JUMPER CONFIGURATION					
Size	JP5	JP101	JP102	JP103	JP104
32KB	1 & 2	1 & 2	1 & 2	1 & 2	1 & 2
64KB	2 & 3	1 & 2	1 & 2	1 & 2	1 & 2
128KB	2 & 3	1 & 2	1 & 2	1 & 2	2 & 3
256KB	2 & 3	2 & 3	2 & 3	2 & 3	2 & 3

Note: Pins designated should be in the closed position.