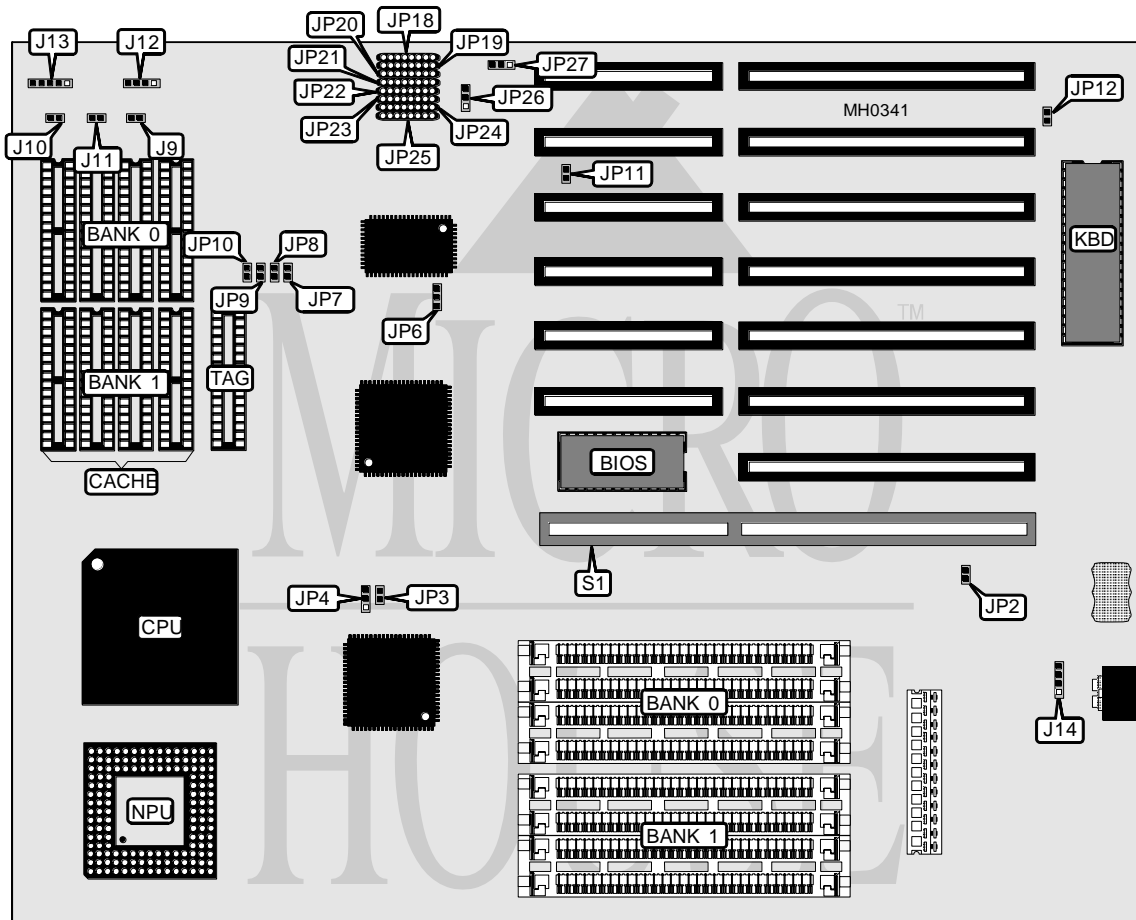


JOINDATA SYSTEMS, INC.

G 4 8 6 S L C

Processor	80486SX/80486DX
Processor Speed	25/33MHz
Chip Set	Symphony
Max. Onboard DRAM	32MB
SRAM Cache	64/128/256/1024KB
BIOS	AMI/MR
Dimensions	330mm x 260mm
I/O Options	32-bit external memory card slot
NPU Options	4167



CONNECTIONS			
Purpose	Location	Purpose	Location
Reset switch	J9	Power LED & keylock	J13
Turbo LED	J10	External battery	J14
Turbo switch	J11	32-bit external memory card	S1
Speaker	J12		

Continued on next page . . .

JOINDATA SYSTEMS, INC.
G 4 8 6 S L C

... continued from previous page

USER CONFIGURABLE SETTINGS		
Function	Jumper	Position
í Factory configured - do not alter.	JP6	Pins 1 & 2 Closed
í Factory configured - do not alter.	JP11	Closed
í Monitor type select color	JP12	closed
Monitor type select monochrome	JP12	open

Note: JP6 and JP11 are set for the G486SLC-50MHz, other settings are unidentified.

DRAM CONFIGURATION		
Size	Bank 0	Bank 1
1MB	(4) 256K x 9	NONE
2MB	(4) 256K x 9	(4) 256K x 9
4MB	(4) 1M x 9	NONE
5MB	(4) 1M x 9	(4) 256K x 9
8MB	(4) 1M x 9	(4) 1M x 9
16MB	(4) 4M x 9	NONE
17MB	(4) 4M x 9	(4) 256K x 9
20MB	(4) 4M x 9	(4) 1M x 9
32MB	(4) 4M x 9	(4) 4M x 9

CACHE CONFIGURATION			
Size	Bank 0	Bank 1	TAG
64KB	(4) 8K x 8	(4) 8K x 8	(1) 8K x 8
128KB	(4) 32K x 8	NONE	(1) 32K x 8
256KB	(4) 32K x 8	(4) 32K x 8	(1) 32K x 8
1024KB	(4) 128K x 8	(4) 128K x 8	(1) 128K x 8

CACHE JUMPER CONFIGURATION						
Size	JP7	JP9	JP10	JP18	JP19	JP20
64KB	Open	Closed	Closed	Open	Open	Closed
128KB	Closed	Open	Open	Open	Closed	Open
256KB	Open	Closed	Closed	Closed	Open	Open
1024KB	Open	Closed	Closed	Closed	Open	Open

CACHE JUMPER CONFIGURATION						
Size	JP21	JP22	JP23	JP24	JP26	JP27
64KB	Closed	Open	Closed	Open	2 & 3	2 & 3
128KB	Open	Closed	Open	Open	2 & 3	2 & 3
256KB	Closed	Open	Open	Closed	2 & 3	2 & 3
1024KB	Closed	Open	Open	Closed	1 & 2	1 & 2

Note: JP26 & JP27 may not be present on all boards. Pins designated should be in the closed position.

CPU TYPE CONFIGURATION			
Type	JP3	JP4	JP8
80486DX	Closed	pins 1 & 2 closed	Closed
80486SX	Open	pins 2 & 3 closed	Open

Continued on next page . . .

JOINDATA SYSTEMS, INC.
G 4 8 6 S L C*... continued from previous page*

BATTERY CONFIGURATION		
Type	J14	JP2
146818	pins 1 & 2 closed	Open
DS1287	Open	Closed