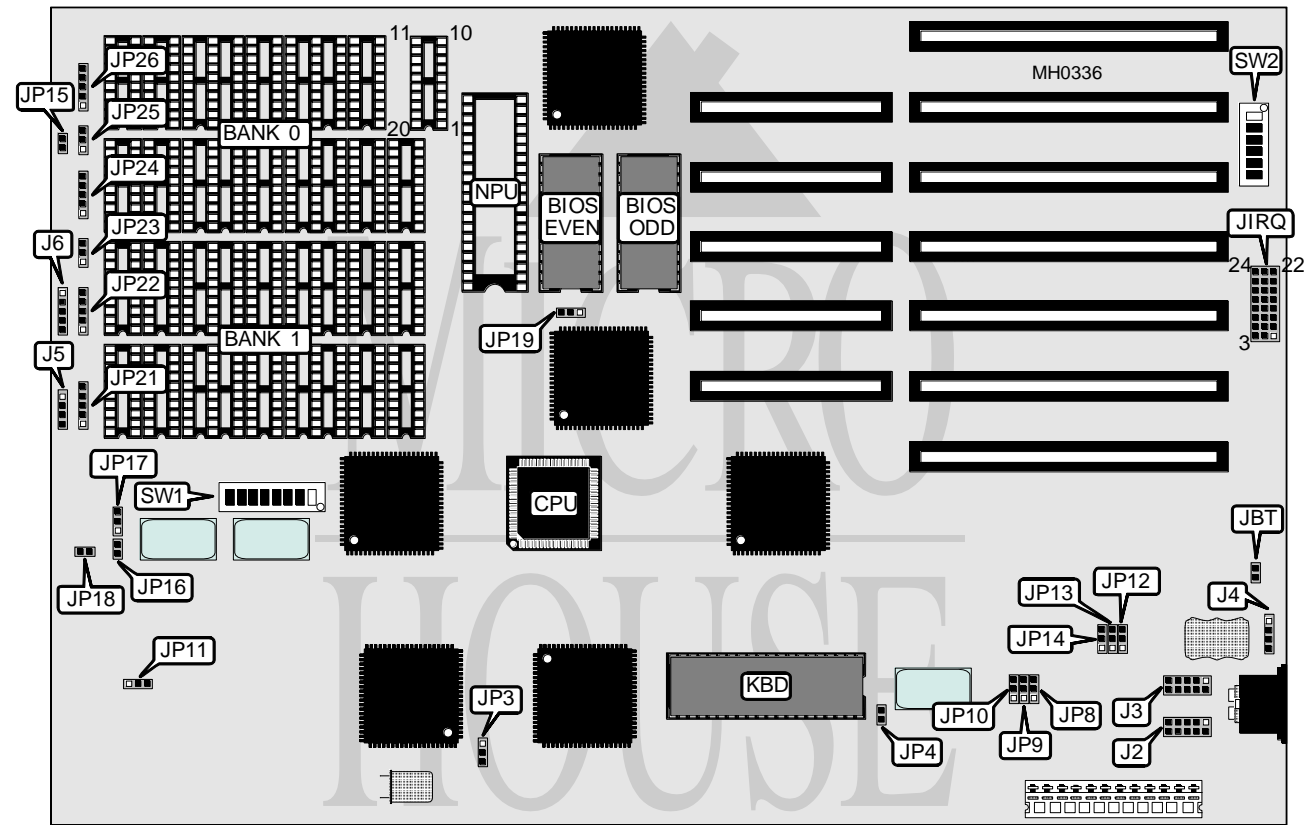


UNIDENTIFIED
WIZ-286 KW-211

Processor	80286
Processor Speed	12MHz
Chip Set	SMD
Max. Onboard DRAM	4MB
Cache	None
BIOS	AMI
Dimensions	330mm x 218mm
I/O Options	Serial ports (2)
NPU Options	80287



CONNECTIONS			
Purpose	Location	Purpose	Location
Serial port 2	J2	Power LED & keylock	J6
Serial port 1	J3	Reset switch	JP15
External battery	J4	Turbo LED	JP16
Speaker	J5	Turbo switch	JP18

Continued on next page . . .

UNIDENTIFIED

WIZ-286 KW-211

... continued from previous page

USER CONFIGURABLE SETTINGS		
Function	Jumper/Switch	Position
í CMOS memory normal operation	JBT	Closed
CMOS memory clear	JBT	Open
í Factory configured - do not alter	JP3	N/A
í Monitor type select color	JP4	Closed
Monitor type select monochrome	JP4	Open
í Factory configured - do not alter	JP11	pins 2 & 3 closed
BIOS type select EPROM	JP11	pins 1 & 2 closed
í Factory configured - do not alter	JP17	pins 2 & 3 closed
CPU speed select switchable at turbo switch	JP17	pins 1 & 2 closed
í Factory configured - do not alter	JP19	pins 2 & 3 closed
BIOS ROM select 27256	JP19	pins 1 & 2 closed
í Factory configured - do not alter	SW1/1	N/A
í Factory configured - do not alter	SW1/5	N/A
í Bus speed select ATCLK/1	SW1/6	Off
Bus speed select ATCLK/2	SW1/6	On
í DMA speed select CPU/1	SW1/7	Off
DMA speed select CPU/2	SW1/7	On
í Factory configured - do not alter	SW1/8	N/A

DRAM CONFIGURATION		
Size	Bank 0	Bank 1
512KB	(18) 41256	NONE
640KB	(18) 41256	(18) 4164
1MB	(18) 41256	(18) 41256
2MB	(18) 411000	NONE
4MB	(18) 411000	(18) 411000
Note: 41256 and 4164 chips are placed in DIP socket pins 1 through 8 and 13 through 20. 411000 chips are placed in DIP socket pins 2 through 19. See upper right corner DIP socket on diagram for orientation.		

DRAM SWITCH CONFIGURATION			
Size	SW1/2	SW1/3	SW1/4
512KB	N/A	Off	Off
640KB	Off	On	Off
1MB	On	On	Off
2MB	N/A	Off	On
4MB	N/A	On	On

Continued on next page ...

UNIDENTIFIED

WIZ-286 KW-211

... continued from previous page

DRAM JUMPER CONFIGURATION						
Size	JP21	JP22	JP23	JP24	JP25	JP26
512KB	2 & 3, 4 & 5	2 & 3, 4 & 5	2 & 3	2 & 3, 4 & 5	2 & 3	2 & 3, 4 & 5
640KB	2 & 3, 4 & 5	2 & 3, 4 & 5	2 & 3	2 & 3, 4 & 5	2 & 3	2 & 3, 4 & 5
1MB	2 & 3, 4 & 5	2 & 3, 4 & 5	2 & 3	2 & 3, 4 & 5	2 & 3	2 & 3, 4 & 5
2MB	1 & 2, 3 & 4	1 & 2, 3 & 4	1 & 2	1 & 2, 3 & 4	1 & 2	1 & 2, 3 & 4
4MB	1 & 2, 3 & 4	1 & 2, 3 & 4	1 & 2	1 & 2, 3 & 4	1 & 2	1 & 2, 3 & 4
Note: Pins designated should be in the closed position.						

IRQ CONFIGURATION		
Line	IRQ for Serial port 1	IRQ for Serial port 2
IRQ3	pins 2 & 3 closed	pins 1 & 2 closed
IRQ4	pins 5 & 6 closed	pins 4 & 5 closed
IRQ5	pins 8 & 9 closed	pins 7 & 8 closed
IRQ9	pins 11 & 12 closed	pins 10 & 11 closed
IRQ10	pins 14 & 15 closed	pins 13 & 14 closed
IRQ11	pins 17 & 18 closed	pins 16 & 17 closed
IRQ12	pins 20 & 21 closed	pins 19 & 20 closed
IRQ15	pins 23 & 24 closed	pins 22 & 23 closed

SERIAL PORT 1 CONFIGURATION			
Setting	JP8	JP9	JP10
Ready signal normal	pins 1 & 2 closed	pins 1 & 2 closed	pins 1 & 2 closed
Ready signal forced active	pins 2 & 3 closed	pins 2 & 3 closed	pins 2 & 3 closed

SERIAL PORT 2 CONFIGURATION			
Setting	JP8	JP9	JP10
Ready signal normal	pins 1 & 2 closed	pins 1 & 2 closed	pins 2 & 3 closed
Ready signal forced active	pins 2 & 3 closed	pins 2 & 3 closed	pins 2 & 3 closed

SERIAL PORT 1 CONFIGURATION			
I/O Address	SW2/1	SW2/2	SW2/3
COM1	On	On	Off
COM2	On	Off	On
COM3	On	Off	Off
COM4	Off	On	On
COM5	Off	On	Off
COM6	Off	Off	On
COM7	Off	Off	Off

Continued on next page...

UNIDENTIFIED

WIZ-286 KW-211

... continued from previous page

SERIAL PORT 2 CONFIGURATION			
I/O Address	SW2/4	SW2/5	SW2/6
COM2	On	On	Off
COM3	On	Off	On
COM4	On	Off	Off
COM5	Off	On	On
COM6	Off	On	Off
COM7	Off	Off	On
COM8	Off	Off	Off