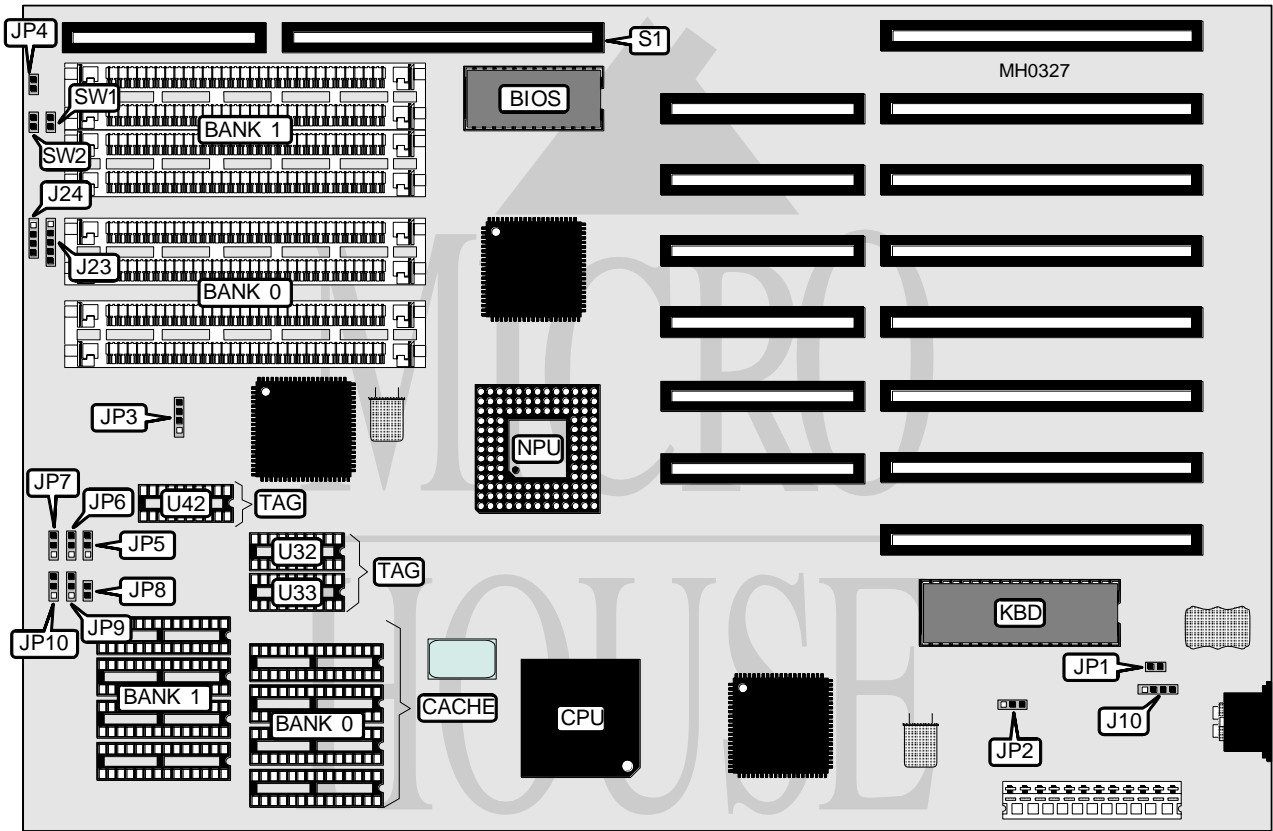


# WINCAL TECHNOLOGY CORPORATION

## 386WB 33/40

**Processor** 80386DX  
**Processor Speed** 33/40MHz  
**Chip Set** OPTI  
**Max. Onboard DRAM** 32MB  
**Cache** 32/64/128/256KB  
**BIOS** AMI  
**Dimensions** 330mm x 214mm  
**I/O Options** 32-bit external memory card slot  
**NPU Options** 80387/3167



CONNECTIONS			
Purpose	Location	Purpose	Location
External battery	J10	32-bit external memory card	S1
Power LED & Keylock	J23	Reset switch	SW1
Speaker	J24	Turbo switch	SW2
Turbo LED	JP4		

Continued on next page . . .

**WINCAL TECHNOLOGY CORPORATION**

**386WB 33/40**

... continued from previous page

USER CONFIGURABLE SETTINGS		
Function	Jumper	Position
í Monitor type select monochrome	JP1	Open
Monitor type select color	JP1	Closed
í CMOS memory normal operation	JP2	pins 2 & 3 closed
CMOS memory clear	JP2	pins 1 & 2 closed
í Bus speed select ATCLK/8	JP3	Closed
Bus speed select ATCLK/6	JP3	Open
Note: Location of JP3 is unidentified.		

DRAM CONFIGURATION		
Size	Bank 0	Bank 1
1MB	(4) 256K x 9	NONE
2MB	(4) 256K x 9	(4) 256K x 9
4MB	(4) 1M x 9	NONE
8MB	(4) 1M x 9	(4) 1M x 9
16MB	(4) 4M x 9	NONE
32MB	(4) 4M x 9	(4) 4M x 9

CACHE CONFIGURATION			
Size	Bank 0	Bank 1	TAG(U32, U33, & U42)
32KB	(4) 8K x 8	NONE	(3) 16K x 4
64KB	(4) 8K x 8	(4) 8K x 8	(3) 16K x 4
128KB	(4) 32K x 8	NONE	(3) 16K x 4
256KB	(4) 32K x 8	(4) 32K x 8	(3) 16K x 4

CACHE JUMPER CONFIGURATION						
Size	JP5	JP6	JP7	JP8	JP9	JP10
32KB	1 & 2	1 & 2	1 & 2	Open	2 & 3	2 & 3
64KB	2 & 3	1 & 2	1 & 2	Open	2 & 3	1 & 2
128KB	2 & 3	1 & 2	2 & 3	Closed	2 & 3	1 & 2
256KB	2 & 3	2 & 3	2 & 3	Closed	1 & 2	1 & 2
Note: Pins designated should be in the closed position.						