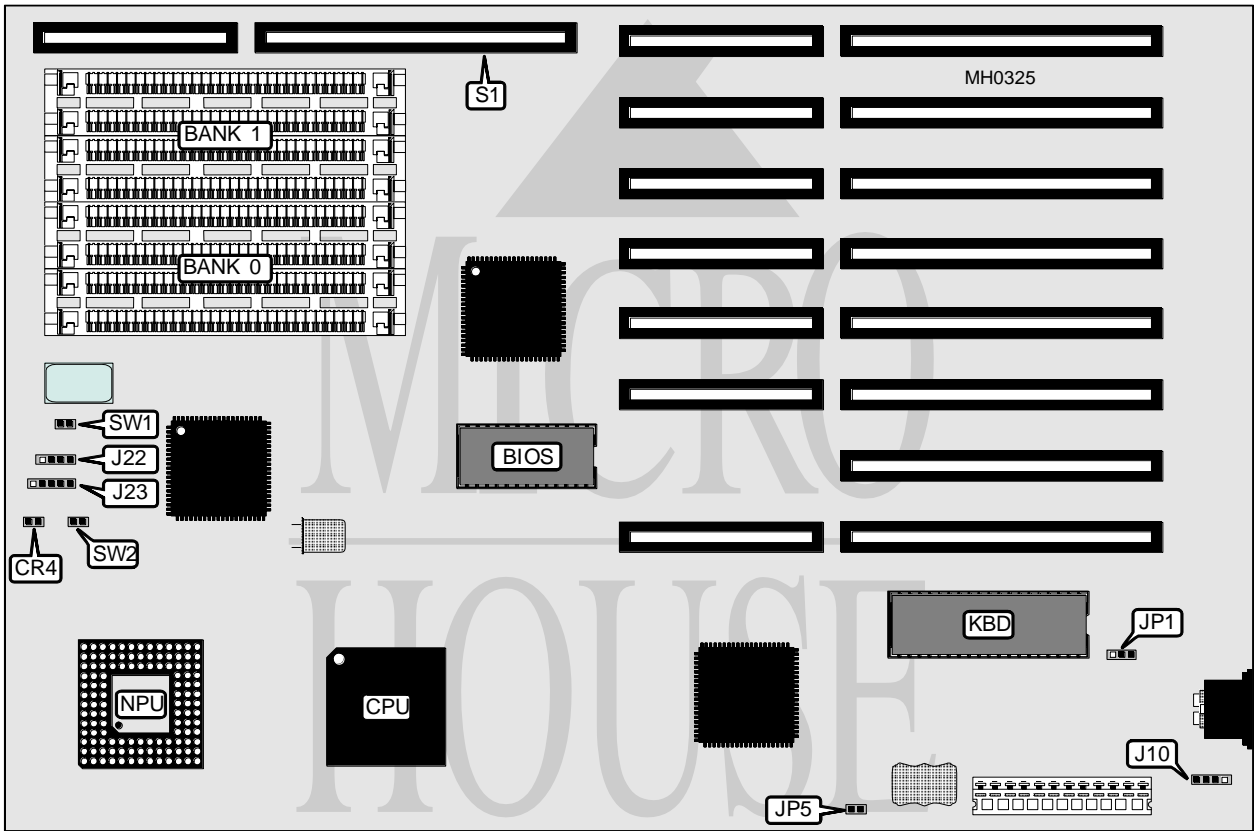


WINCAL TECHNOLOGY CORPORATION

OPTI-25

Processor	80386DX
Processor Speed	25MHz
Chip Set	OPTI
Max. Onboard DRAM	8MB
Cache	None
BIOS	AMI
Dimensions	330mm x 218mm
I/O Options	32-bit external memory card slot
NPU Options	80387/3167



CONNECTIONS			
Purpose	Location	Purpose	Location
Turbo LED	CR4	32-bit external memory card	S1
External battery	J10	Reset switch	SW1
Speaker	J22	Turbo switch	SW2
Power LED & keylock	J23		

Continued on next page . . .

WINCAL TECHNOLOGY CORPORATION

OPTI-25

... continued from previous page

USER CONFIGURABLE SETTINGS		
Function	Jumper	Position
í Monitor type select color	JP1	pins 1 & 2 closed
Monitor type select monochrome	JP1	pins 2 & 3 closed
í CMOS normal operation	JP5	Closed
CMOS memory clear	JP5	Open
Note: JP5 should be left open for approximately 10 minutes when clearing CMOS memory. JP5 only appears on version 2.5 board.		

DRAM CONFIGURATION				
Size	Bank 0	Bank 1	Bank 2	Bank 3
1MB	(4) 256K x 9	NONE	NONE	NONE
2MB	(4) 256K x 9	(4) 256K x 9	NONE	NONE
3MB	(4) 256K x 9	(4) 256K x 9	(4) 256K x 9	NONE
4MB	(4) 256K x 9	(4) 256K x 9	(4) 256K x 9	(4) 256K x 9
4MB	(4) 1M x 9	NONE	NONE	NONE
5MB	(4) 1M x 9	(4) 256K x 9	NONE	NONE
6MB	(4) 1M x 9	(4) 256K x 9	(4) 256K x 9	NONE
7MB	(4) 1M x 9	(4) 256K x 9	(4) 256K x 9	(4) 256K x 9
8MB	(4) 1M x 9	(4) 1M x 9	NONE	NONE
9MB	(4) 1M x 9	(4) 1M x 9	(4) 256K x 9	NONE
10MB	(4) 1M x 9	(4) 1M x 9	(4) 256K x 9	(4) 256K x 9
12MB	(4) 1M x 9	(4) 1M x 9	(4) 1M x 9	NONE
13MB	(4) 1M x 9	(4) 1M x 9	(4) 1M x 9	(4) 256K x 9
16MB	(4) 1M x 9	(4) 1M x 9	(4) 1M x 9	(4) 1M x 9
16MB	(4) 4M x 9	NONE	NONE	NONE
Note: Banks 2 & 3 are utilized when a 32-bit external memory card is installed at S1.				