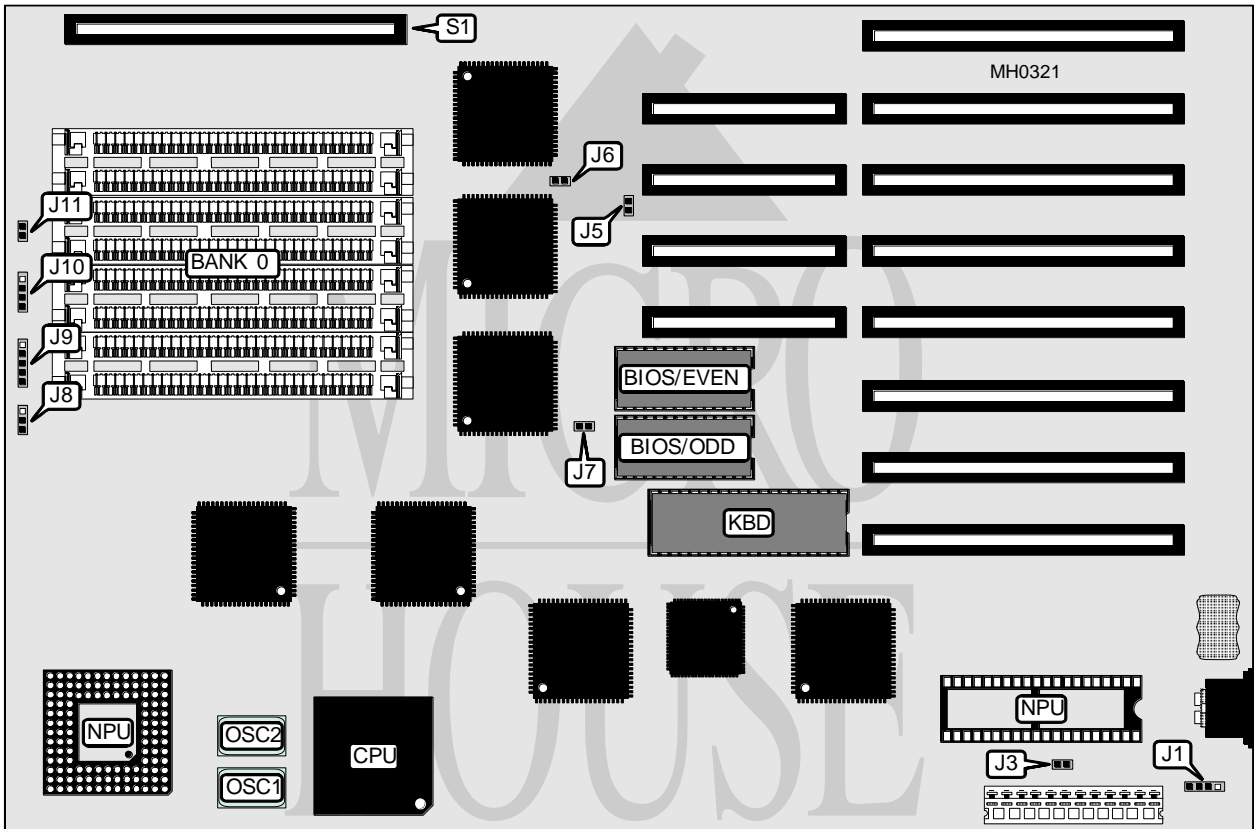


# CHICONY, INC.

## CH-386-20

**Processor** 80386DX  
**Processor Speed** 20MHz  
**Chip Set** C & T  
**Max. Onboard DRAM** 8MB  
**Cache** None  
**BIOS** AMI  
**Dimensions** 218mm x 330mm  
**I/O Options** 32-bit external memory card  
**NPU Options** 80287/80387



CONNECTIONS			
Purpose	Location	Purpose	Location
External battery	J1	Speaker	J10
Reset switch	J5	Turbo LED	J11
Turbo switch	J8	32-bit external memory card	S1
Power LED & keylock	J9		

Continued on next page . . .

**CHICONY, INC.****CH-386-20**

... continued from previous page

USER CONFIGURABLE SETTINGS		
Function	Jumper	Position
í Monitor type select color	J3	Open
Monitor type select monochrome	J3	Closed
í DMA mode select 32-bit	J6	Open
DMA mode select 16-bit	J6	Closed
NPU type select 80287	J7	Closed
NPU type select 80387	J7	Open

DRAM CONFIGURATION		
Size	Bank 0	Bank 1
2MB	(8) 256K x 9	NONE
4MB	(8) 256K x 9	(8) 256K x 9
8MB	(8) 1M x 9	NONE
10MB	(8) 1M x 9	(8) 256K x 9
16MB	(8) 1M x 9	(8) 1M x 9

Note: Bank 1 is used when a 32-bit external memory card is installed at S1.