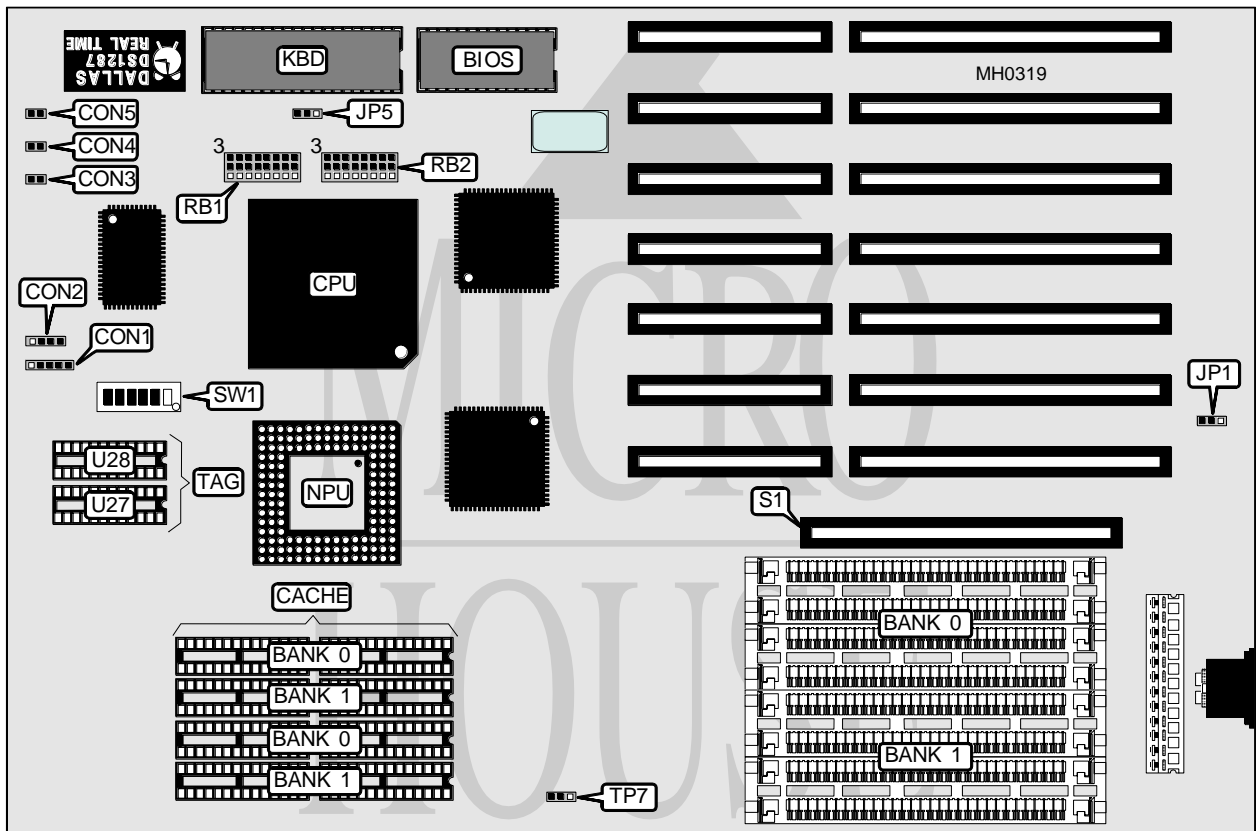


# ASUS COMPUTER INTERNATIONAL ISA 486S

<b>Processor</b>	80486SX/80487SX/80486DX
<b>Processor Speed</b>	20/25/33MHz
<b>Chip Set</b>	Symphony Haydn
<b>Max. Onboard DRAM</b>	32MB
<b>Cache</b>	64/128/256KB
<b>BIOS</b>	AMI
<b>Dimensions</b>	330mm x 218mm
<b>I/O Options</b>	32-bit external memory card
<b>NPU Options</b>	4167



CONNECTIONS			
Purpose	Location	Purpose	Location
Power LED & keylock	CON1	Turbo switch	CON4
Speaker	CON2	Reset switch	CON5
Turbo LED	CON3	32-bit external memory card	S1

Continued on next page . . .

# ASUS COMPUTER INTERNATIONAL

## ISA 486S

... continued from previous page

### USER CONFIGURABLE SETTINGS

Function	Jumper	Position
Power good signal detect from power supply	JP1	pins 2 & 3 closed
Power good signal detect from board	JP1	pins 1 & 2 closed
Monitor type select monochrome or other than CGA	JP5	pins 2 & 3 closed
Monitor type select CGA	JP5	pins 1 & 2 closed

### DRAM CONFIGURATION

Size	Bank 0	Bank 1
1MB	(4) 256K x 9	NONE
2MB	(4) 256K x 9	(4) 256K x 9
4MB	(4) 1M x 9	NONE
5MB	(4) 1M x 9	(4) 256K x 9
8MB	(4) 1M x 9	(4) 1M x 9
16MB	(4) 4M x 9	NONE
17MB	(4) 4M x 9	(4) 256K x 9
20MB	(4) 4M x 9	(4) 1M x 9
32MB	(4) 4M x 9	(4) 4M x 9

Note: Onboard memory and external memory are independent and may be used in any combination.

### EXTERNAL MEMORY CARD CONFIGURATION

Size	Bank 0	Bank 1
1MB	(4) 256K x 9	NONE
2MB	(4) 256K x 9	(4) 256K x 9
4MB	(4) 1M x 9	NONE
8MB	(4) 1M x 9	(4) 1M x 9
16MB	(4) 4M x 9	NONE
32MB	(4) 4M x 9	(4) 4M x 9

### CACHE CONFIGURATION

Size	Bank 0	Bank 1	TAG (U27)	TAG (U28)
64KB	(4) 8K x 8	(4) 8K x 8	(1) 8K x 8	NONE
128KB	(4) 32K x 8	NONE	(1) 8K x 8	NONE
256KB	(4) 32K x 8	(4) 32K x 8	(1) 8K x 8	(1) 8K x 8
256KB	(4) 32K x 8	(4) 32K x 8	(1) 32K x 8	NONE

### CACHE JUMPER CONFIGURATION

Size	TP7	RB1 & RB2
64KB	pins 2 & 3 closed	Position 1
128KB	pins 1 & 2 closed	Position 2
256KB	pins 2 & 3 closed	Position 3

Note: Location of TP7 is unverified.

### CPU SWITCH CONFIGURATION

Type	SW1/1	SW1/2	SW1/3	SW1/4	SW1/5	SW1/6
80486SX	Off	Off	Off	Off	On	On
80487SX	On	On	On	Off	Off	Off

---

80486DX	On	On	On	Off	Off	Off
---------	----	----	----	-----	-----	-----