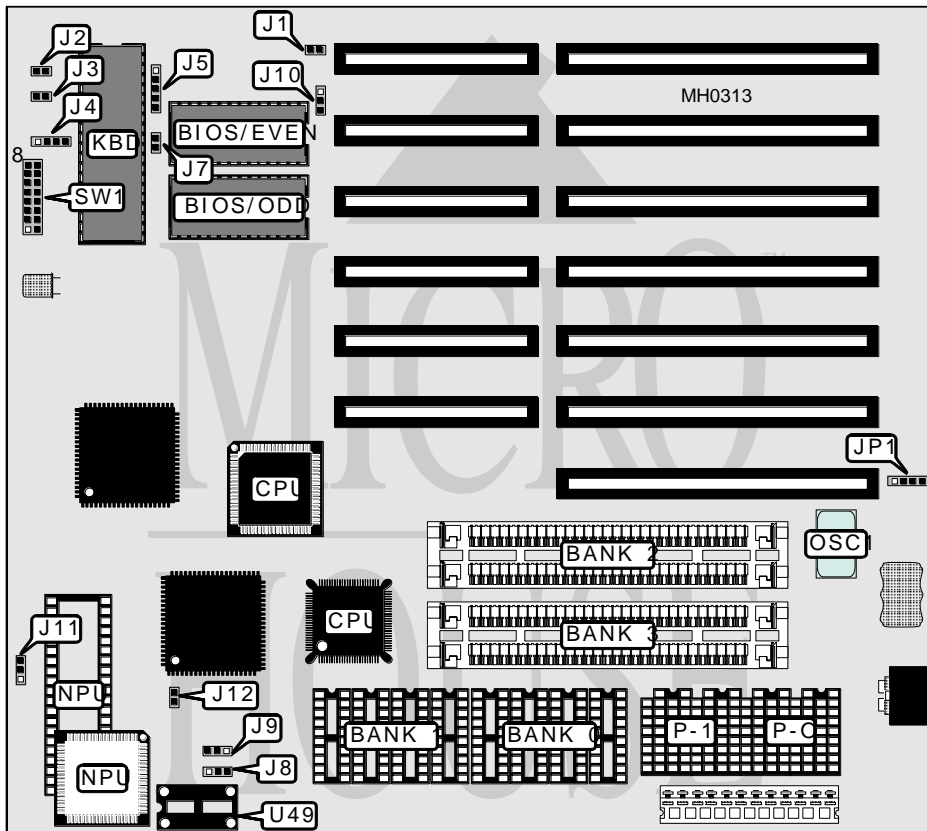


**PEAKTRON COMPUTER, INC.**  
**PA386SX-SMT-16/20/25**  
**PA286-SMT-12/16/20/25**

**Processor** 80286/80386SX  
**Processor Speed** 12/16/20/25MHz  
**Chip Set** Peaktron  
**Max. Onboard DRAM** 16MB  
**Cache** None  
**BIOS** AMI  
**Dimensions** 248mm x 218mm  
**I/O Options** None  
**NPU Options** 80287/80387



CONNECTIONS			
Purpose	Location	Purpose	Location
Reset switch	J1	Speaker	J4
Turbo switch	J2	Power LED & Keylock	J5
Turbo LED	J3	External battery	JP1
Note: Motherboard is supplied with either an 80386SX & 80387SX socket or an 80286 & 80287			socket.

Continued on next page . . .

PEAKTRON COMPUTER, INC.  
 PA386SX-SMT-16/20/25  
 PA286-SMT-12/16/20/25

... continued from previous page

USER CONFIGURABLE SETTINGS		
Function	Jumper/Switch	Position
í Monitor type select monochrome	J7	open
Monitor type select color	J7	closed
í NPU mode select synchronous with OSC1	J11	pins 2 & 3 closed
NPU mode select synchronous with oscillator at U49	J11	pins 1 & 2 closed
Bus speed select ATCLK/2	SW1/1	Off
Bus speed select ATCLK/3	SW1/1	On
í Parity check enabled	SW1/2	On
Parity check disabled	SW1/2	Off
í Shadow ram disabled	SW1/4	On
Shadow ram enabled	SW1/4	Off
Note: Socket at U49 may not be available on all boards. If 8 bit SIMM/SIPPs are used, SW1/switch 2 must be open, otherwise it must be closed.		

DRAM CONFIGURATION						
Size	Bank 0	Bank 1	Bank 2	Bank 3	P - 0	P - 1
512KB	(4) 44256	NONE	NONE	NONE	(2) 41256	NONE
512KB	NONE	NONE	(2) 256K x 9	NONE	NONE	NONE
1MB	(4) 44256	(4) 44256	NONE	NONE	(2) 41256	(2) 41256
1MB	NONE	NONE	(2) 256K x 9	(2) 256K x 9	NONE	NONE
1.5MB	(4) 44256	(4) 44256	(2) 256K x 9	NONE	NONE	NONE
2MB	(4) 441000	NONE	NONE	NONE	(2) 411000	NONE
2MB	NONE	NONE	(2) 1M x 9	NONE	NONE	NONE
3MB	(4) 44256	(4) 44256	(2) 1M x 9	NONE	NONE	NONE
4MB	(4) 441000	(4) 441000	NONE	NONE	(2) 411000	(2) 411000
4MB	NONE	NONE	(2) 1M x 9	(2) 1M x 9	NONE	NONE
5MB	(4) 44256	(4) 44256	(2) 1M x 9	(2) 1M x 9	NONE	NONE
6MB	(4) 441000	(4) 441000	(2) 1M x 9	NONE	NONE	NONE
8MB	NONE	NONE	(2) 4M x 9	NONE	NONE	NONE
16MB	NONE	NONE	(2) 4M x 9	(2) 4M x 9	NONE	NONE

Continued on next page...

**PEAKTRON COMPUTER, INC.**  
**PA386SX-SMT-16/20/25**  
**PA286-SMT-12/16/20/25**

... continued from previous page

DRAM JUMPER/SWITCH CONFIGURATION						
Size	J8	J9	SW1/5	SW1/6	SW1/7	SW1/8
512KB	2 & 3	1 & 2	Off	On	Off	Off
512KB	1 & 2	2 & 3	Off	On	Off	Off
1MB	2 & 3	1 & 2	Off	On	Off	On
1MB	1 & 2	2 & 3	Off	On	Off	On
1.5MB	2 & 3	1 & 2	Off	Off	On	Off
2MB	2 & 3	1 & 2	On	Off	Off	Off
2MB	1 & 2	2 & 3	On	Off	Off	Off
3MB	2 & 3	1 & 2	Off	On	On	On
4MB	2 & 3	1 & 2	On	Off	Off	On
4MB	1 & 2	2 & 3	On	Off	Off	On
5MB	2 & 3	1 & 2	Off	On	On	On
6MB	2 & 3	1 & 2	On	Off	On	Off
8MB	1 & 2	2 & 3	On	On	Off	Off
16MB	1 & 2	2 & 3	On	On	Off	On

Note: Pins designated should be in the closed position.

BIOS CONFIGURATION		
Size	J10	J12
27256	pins 1 & 2 closed	Open
27512	pins 2 & 3 closed	Closed