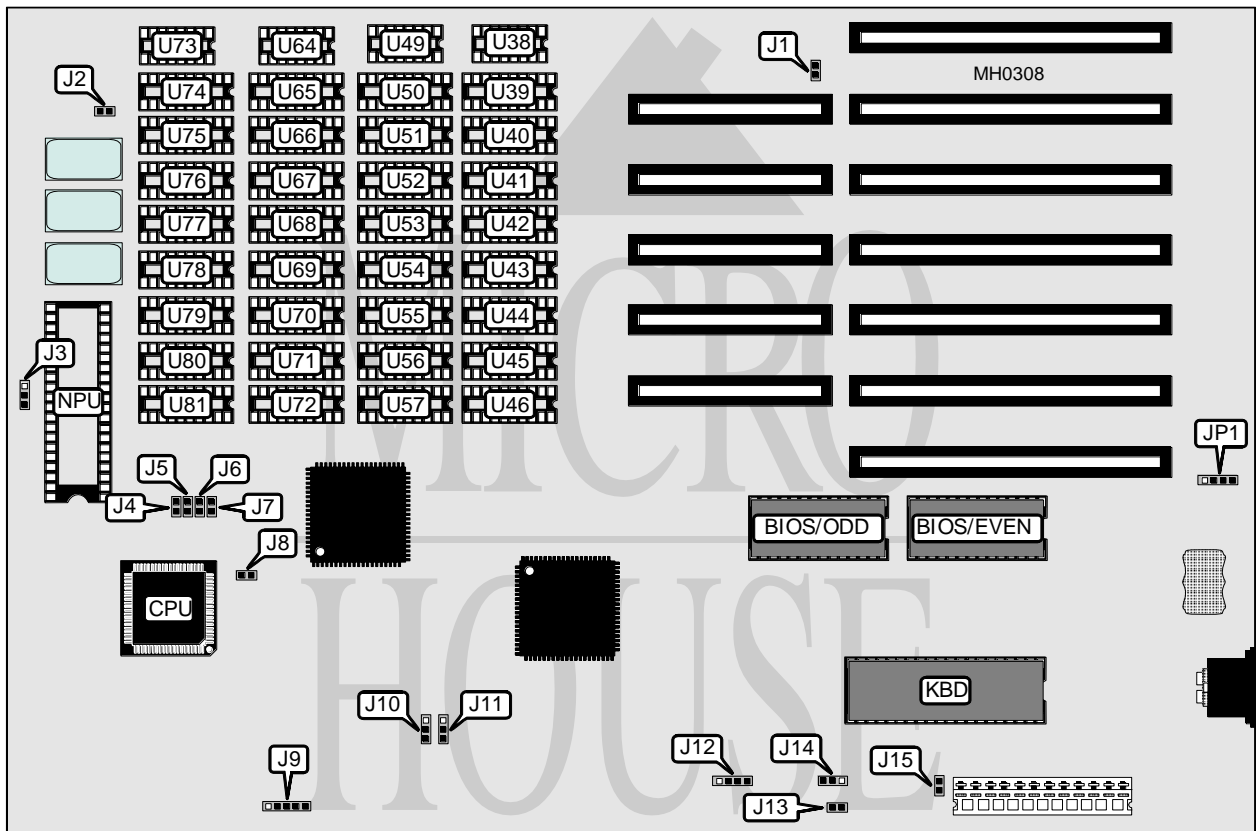


PEAKTRON COMPUTER, INC.

P A 2 8 6

Processor	80286
Processor Speed	12/16MHz
Chip Set	Peaktron
Max. Onboard DRAM	4MB
Cache	None
BIOS	AMI
Dimensions	330mm x 220mm
I/O Options	None
NPU Options	80287



CONNECTIONS			
Purpose	Location	Purpose	Location
Turbo LED	J1	Speaker	J12
Reset switch	J2	Turbo switch	J13
Power LED & keylock	J9	External battery	JP1

Continued on next page . . .

PEAKTRON COMPUTER, INC.

P A 2 8 6

... continued from previous page

USER CONFIGURABLE SETTINGS		
Function	Jumper	Position
í NPU mode select synchronous with CPU	J3	pins 2 & 3 closed
NPU mode select asynchronous with CPU	J3	pins 1 & 2 closed
í Parity check enabled	J4	Closed
Parity check disabled	J4	Open
í Shadow BIOS ROM enabled	J5	Open
Shadow BIOS ROM disabled	J5	Closed
í DRAM select 0 wait states	J7	Closed
DRAM select 1 wait state	J7	Open
í Bus speed select ATCLK/2	J8	Open
Bus speed select ATCLK/3	J8	Closed
í CPU speed select switchable at turbo switch	J14	Open
CPU speed select switchable at keyboard	J14	pins 1 & 2 closed
í Monitor type select monochrome	J15	Open
Monitor type select color	J15	Closed

DRAM CONFIGURATION				
Size	Bank 0	Bank 1	Bank 2	Bank 3
512KB	(4) 44256	NONE	NONE	NONE
1MB	(4) 44256	(4) 44256	NONE	NONE
2MB	NONE	NONE	(16) 441000	NONE
4MB	NONE	NONE	(16) 441000	(16) 441000
Note: Bank 0 = U65, U69, U74, U78, Bank 1 = U39, U43, U50, U54, Bank 2 = U65 - U72, U74 - U81, Bank 3 = U39 - U46, U50 - U57				

DRAM PARITY CONFIGURATION				
Size	U38	U49	U64	U73
512KB	NONE	NONE	(1) 41256	(1) 41256
1MB	(1) 41256	(1) 41256	(1) 41256	(1) 41256
2MB	NONE	NONE	(1) 411000	(1) 411000
4MB	(1) 411000	(1) 411000	(1) 411000	(1) 411000

DRAM JUMPER CONFIGURATION		
Size	J6	J10
512KB	Open	pins 2 & 3 closed
1MB	Open	pins 2 & 3 closed
2MB	Closed	pins 1 & 2 closed
4MB	Closed	pins 1 & 2 closed