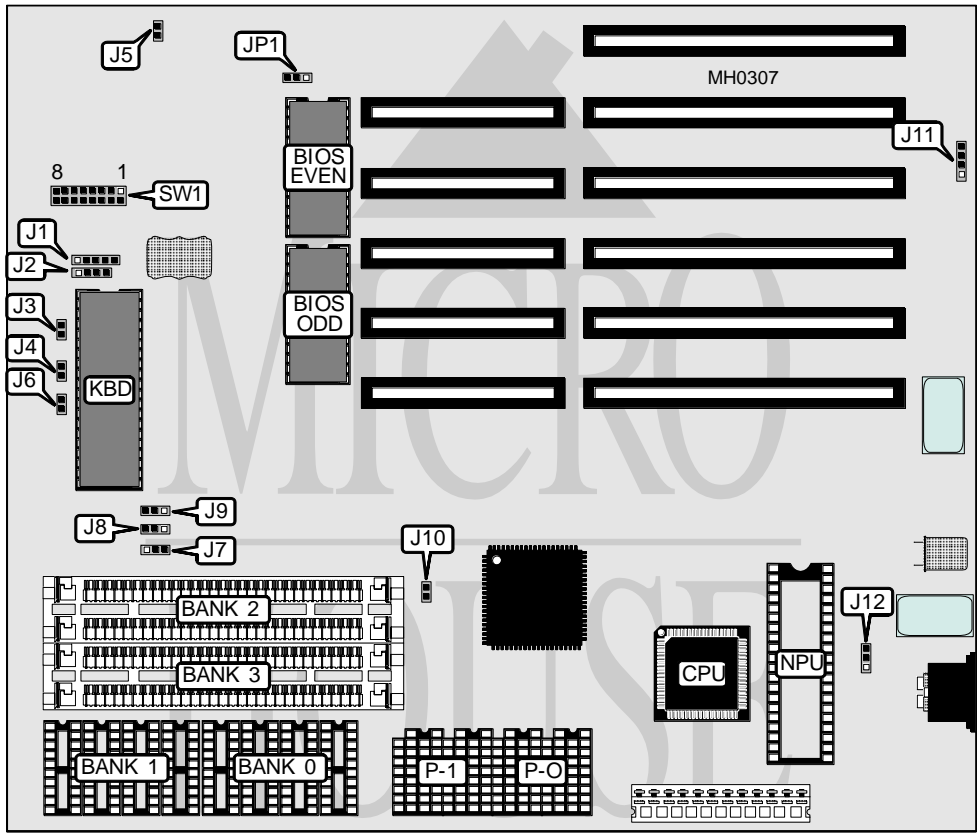


# PEAKTRON COMPUTER, INC.

## PA286-SMT-12/16/20, PA286-SMT-12D/16D

<b>Processor</b>	80286
<b>Processor Speed</b>	12/16/20MHz
<b>Chip Set</b>	Peaktron
<b>Max. Onboard DRAM</b>	16MB
<b>Cache</b>	None
<b>BIOS</b>	AMI
<b>Dimensions</b>	247mm x 220mm
<b>I/O Options</b>	None
<b>NPU Options</b>	80287



CONNECTIONS			
Purpose	Location	Purpose	Location
Power LED & keylock	J1	Turbo switch	J4
Speaker	J2	Reset switch	J5
Turbo LED	J3	External battery	J11

Continued on next page . . .

## PEAKTRON COMPUTER, INC.

## PA286-SMT-12/16/20, PA286-SMT-12D/16D

... continued from previous page

USER CONFIGURABLE SETTINGS		
Function	Jumper	Position
í Monitor type select monochrome	J6	Open
Monitor type select color	J6	Closed
í CPU speed control select turbo switch	J9	Open
CPU speed control select keyboard controller pin 32	J9	pins 1 & 2 closed
CPU speed control select keyboard controller pin 23	J9	pins 2 & 3 closed
í NPU mode select synchronous with CPU	J12	pins 2 & 3 closed
NPU mode select asynchronous with CPU	J12	pins 1 & 2 closed
í Bus speed select ATCLK/2	SW1/jumper 1	Open
Bus speed select ATCLK/3	SW1/jumper 1	Closed
í Parity check enabled	SW1/jumper 2	Closed
Parity check disabled	SW1/jumper 2	Open
í DRAM select 0 wait states	SW1/jumper 3	Closed
DRAM select 1 wait state	SW1/jumper 3	Open
í Shadow BIOS ROM disabled	SW1/jumper 4	Closed
Shadow BIOS ROM enabled	SW1/jumper 4	Open

DRAM CONFIGURATION						
Size	Bank 0	P-0	Bank 1	P-1	Bank 2	Bank 3
512KB	(4) 44256	(2) 41256	NONE	NONE	NONE	NONE
512KB	NONE	NONE	NONE	NONE	(2) 256K x 9	NONE
1MB	(4) 44256	(2) 41256	(4) 44256	(2) 41256	NONE	NONE
1MB	NONE	NONE	NONE	NONE	(2) 256K x 9	(2) 256K x 9
1.5MB	(4) 44256	(2) 41256	(4) 44256	(2) 41256	(2) 256K x 9	NONE
2MB	(4) 441000	(2) 411000	NONE	NONE	NONE	NONE
2MB	NONE	NONE	NONE	NONE	(2) 1M x 9	NONE
3MB	(4) 44256	(2) 41256	(4) 44256	(2) 41256	(2) 1M x 9	NONE
4MB	(4) 441000	(2) 411000	(4) 441000	(2) 411000	NONE	NONE
4MB	NONE	NONE	NONE	NONE	(2) 1M x 9	(2) 1M x 9
6MB	(4) 441000	(2) 411000	(4) 441000	(2) 411000	(2) 1M x 9	NONE
8MB	NONE	NONE	NONE	NONE	(2) 4M x 9	NONE
16MB	NONE	NONE	NONE	NONE	(2) 4M x 9	(2) 4M x 9

Continued on next page . . .

**PEAKTRON COMPUTER, INC.**

**PA286-SMT-12/16/20, PA286-SMT-12D/16D**

... continued from previous page

DRAM JUMPER CONFIGURATION						
Size	SW1/5	SW1/6	SW1/7	SW1/8	J7	J8
512KB	Open	Closed	Open	Open	Open	Open
512KB	Open	Closed	Open	Open	2 & 3	1 & 2
1MB	Open	Closed	Open	Closed	Open	Open
1MB	Open	Closed	Open	Closed	2 & 3	1 & 2
1.5MB	Open	Open	Closed	Open	1 & 2	2 & 3
2MB	Closed	Open	Open	Open	Open	Open
2MB	Closed	Open	Open	Open	2 & 3	1 & 2
3MB	Open	Closed	Closed	Open	1 & 2	2 & 3
4MB	Closed	Open	Open	Closed	Open	Open
4MB	Closed	Open	Open	Closed	2 & 3	1 & 2
6MB	Closed	Open	Closed	Open	1 & 2	2 & 3
8MB	Closed	Closed	Open	Open	2 & 3	1 & 2
16MB	Closed	Closed	Open	Closed	2 & 3	1 & 2

Note: Pins designated should be in the closed position.

BIOS CONFIGURATION		
Size	JP1	JP10
27256	pins 1 & 2 closed	Open
27512	pins 2 & 3 closed	Closed