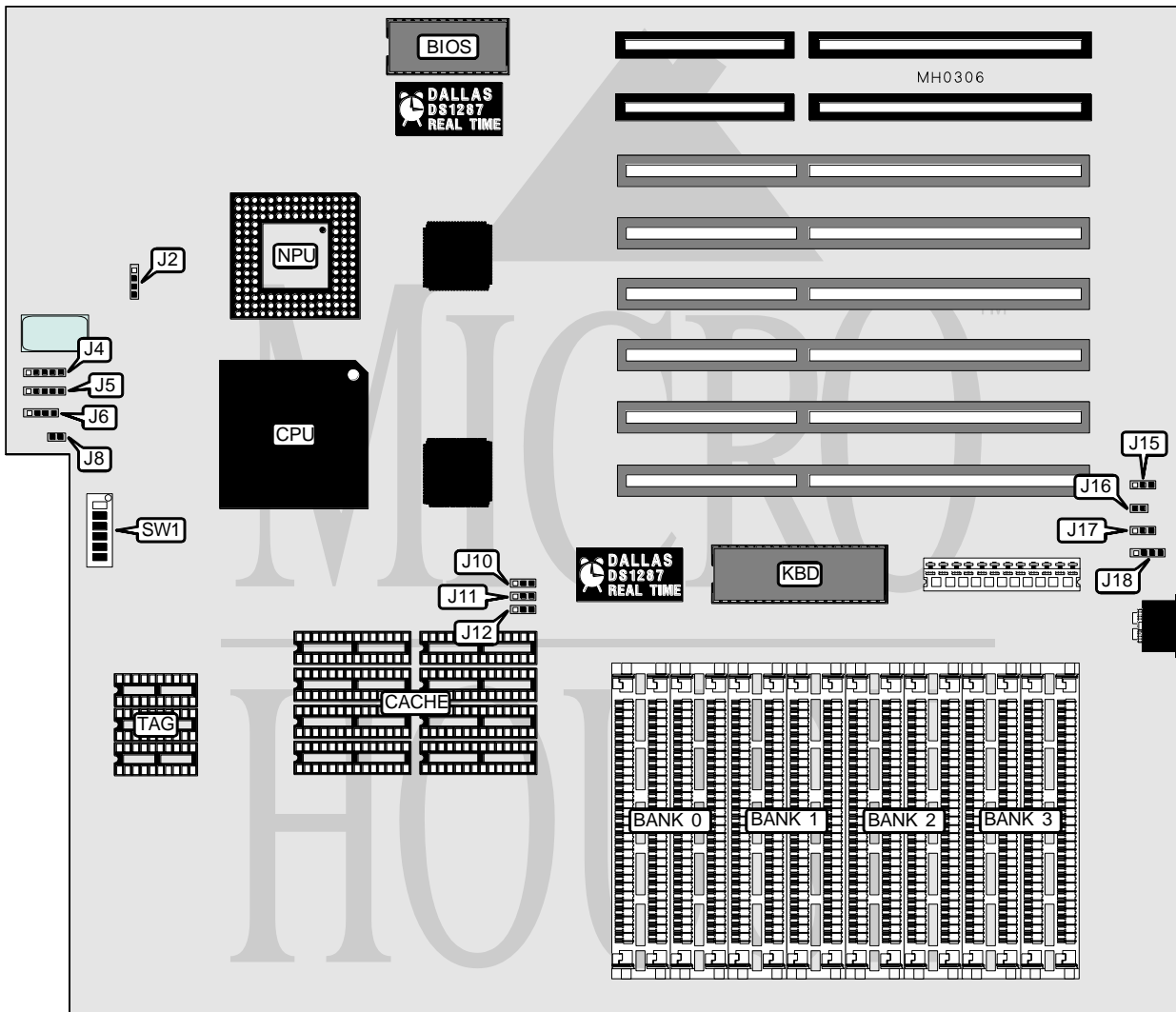


DIAMOND FLOWER, INC.

EISA 486-25/33IC

Processor	80486DX
Processor Speed	25/33MHz
Chip Set	Intel
Max. Onboard DRAM	64MB
Cache	64/256KB
BIOS	AMI
Dimensions	351mm x 305mm
I/O Options	None
NPU Options	4167



CONNECTIONS			
Purpose	Location	Purpose	Location
Auxiliary keyboard	J4	Reset switch	J8 or J16
Power LED & Keylock	J5	External battery	J18
Speaker	J6		

Continued on next page . . .

DIAMOND FLOWER, INC.

EISA 486-25/33IC

... continued from previous page

USER CONFIGURABLE SETTINGS		
Function	Jumper	Position
í Factory configured - do not alter	J2	N/A
í Monitor type select color	J15	pins 2 & 3 closed
Monitor type select monochrome	J15	pins 1 & 2 closed
í Battery select external	J17	pins 2 & 3 closed
Battery select internal	J17	pins 1 & 2 closed

DRAM CONFIGURATION				
Size	Bank 0	Bank 1	Bank 2	Bank 3
1MB	(4) 256K x 9	NONE	NONE	NONE
2MB	(4) 256K x 9	(4) 256K x 9	NONE	NONE
3MB	(4) 256K x 9	(4) 256K x 9	(4) 256K x 9	NONE
4MB	(4) 256K x 9	(4) 256K x 9	(4) 256K x 9	(4) 256K x 9
4MB	(4) 1M x 9	NONE	NONE	NONE
5MB	(4) 1M x 9	(4) 256K x 9	NONE	NONE
6MB	(4) 1M x 9	(4) 256K x 9	(4) 256K x 9	NONE
7MB	(4) 1M x 9	(4) 256K x 9	(4) 256K x 9	(4) 256K x 9
8MB	(4) 1M x 9	(4) 1M x 9	NONE	NONE
9MB	(4) 1M x 9	(4) 1M x 9	(4) 256K x 9	NONE
10MB	(4) 1M x 9	(4) 1M x 9	(4) 256K x 9	(4) 256K x 9
12MB	(4) 1M x 9	(4) 1M x 9	(4) 1M x 9	NONE
13MB	(4) 1M x 9	(4) 1M x 9	(4) 1M x 9	(4) 256K x 9
16MB	(4) 1M x 9	(4) 1M x 9	(4) 1M x 9	(4) 1M x 9
16MB	(4) 4M x 9	NONE	NONE	NONE
17MB	(4) 4M x 9	(4) 256K x 9	NONE	NONE
18MB	(4) 4M x 9	(4) 256K x 9	(4) 256K x 9	NONE
19MB	(4) 4M x 9	(4) 256K x 9	(4) 256K x 9	(4) 256K x 9
20MB	(4) 4M x 9	(4) 1M x 9	NONE	NONE
21MB	(4) 4M x 9	(4) 1M x 9	(4) 256K x 9	NONE
22MB	(4) 4M x 9	(4) 1M x 9	(4) 256K x 9	(4) 256K x 9
24MB	(4) 4M x 9	(4) 1M x 9	(4) 1M x 9	NONE
25MB	(4) 4M x 9	(4) 1M x 9	(4) 1M x 9	(4) 256K x 9
28MB	(4) 4M x 9	(4) 1M x 9	(4) 1M x 9	(4) 1M x 9
32MB	(4) 4M x 9	(4) 4M x 9	NONE	NONE
33MB	(4) 4M x 9	(4) 4M x 9	(4) 256K x 9	NONE
34MB	(4) 4M x 9	(4) 4M x 9	(4) 256K x 9	(4) 256K x 9
36MB	(4) 4M x 9	(4) 4M x 9	(4) 1M x 9	NONE
37MB	(4) 4M x 9	(4) 4M x 9	(4) 1M x 9	(4) 256K x 9
40MB	(4) 4M x 9	(4) 4M x 9	(4) 1M x 9	(4) 1M x 9
48MB	(4) 4M x 9	(4) 4M x 9	(4) 4M x 9	NONE
49MB	(4) 4M x 9	(4) 4M x 9	(4) 4M x 9	(4) 256K x 9
52MB	(4) 4M x 9	(4) 4M x 9	(4) 4M x 9	(4) 1M x 9
64MB	(4) 4M x 9	(4) 4M x 9	(4) 4M x 9	(4) 4M x 9

Continued on next page . . .

DIAMOND FLOWER, INC.
EISA 486-25/331C

... continued from previous page

DRAM SWITCH CONFIGURATION						
Size	SW1/1	SW1/2	SW1/3	SW1/4	SW1/5	SW1/6
1MB	On	On	On	On	On	On
2MB	Off	On	On	On	On	On
3MB	On	Off	On	On	On	On
4MB	Off	Off	On	On	On	On
4MB	On	On	Off	On	On	On
5MB	Off	On	On	On	Off	On
6MB	On	Off	On	On	Off	On
7MB	Off	Off	On	On	Off	On
8MB	Off	On	Off	On	On	On
9MB	On	Off	Off	On	Off	On
10MB	Off	Off	Off	On	Off	On
12MB	On	Off	Off	On	On	On
13MB	Off	On	Off	On	Off	On
16MB	Off	Off	Off	On	On	On
16MB	On	On	On	Off	On	On
17MB	Off	On	On	On	On	Off
18MB	On	Off	On	On	On	Off
19MB	Off	Off	On	On	On	Off
20MB	Off	On	On	On	Off	Off
21MB	On	On	On	Off	Off	Off
22MB	Off	On	On	Off	Off	Off
24MB	On	Off	On	Off	Off	Off
25MB	On	On	On	On	Off	Off
28MB	Off	Off	On	Off	Off	Off
32MB	Off	On	On	Off	On	On
33MB	On	Off	On	Off	On	Off
34MB	Off	Off	On	Off	On	Off
36MB	On	Off	Off	On	Off	Off
37MB	Off	Off	On	On	Off	Off
40MB	Off	Off	Off	On	Off	Off
48MB	On	Off	On	Off	On	On
49MB	Off	On	On	Off	On	Off
52MB	On	Off	On	On	Off	Off
64MB	Off	Off	On	Off	On	On

CACHE CONFIGURATION		
Size	Bank 0	TAG
64KB	(8) 8K x 8	(3) 16K x 4
256KB	(8) 32K x 8	(3) 16K x 4

CACHE JUMPER CONFIGURATION			
Size	J10	J11	J12
64KB	pins 2 & 3 closed	pins 2 & 3 closed	pins 2 & 3 closed
256KB	pins 1 & 2 closed	pins 1 & 2 closed	pins 1 & 2 closed