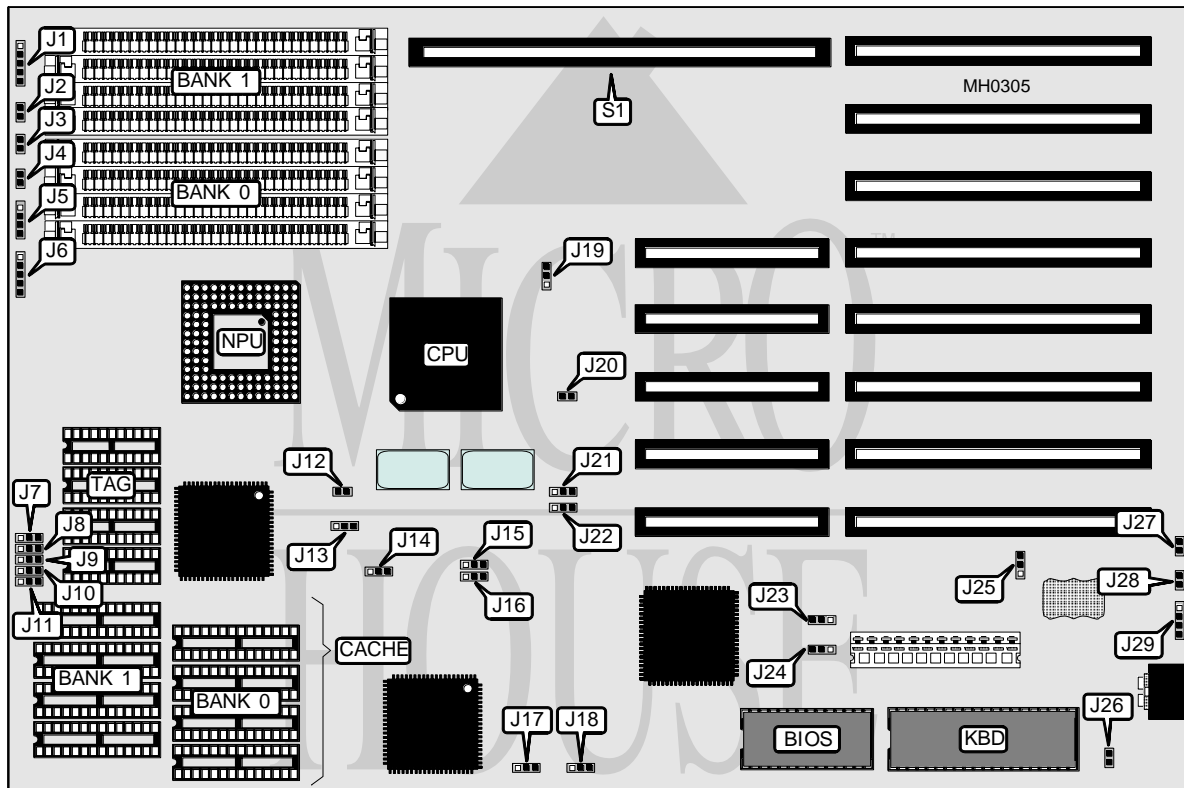


DIAMOND FLOWER, INC.

386-25UCB/386-33UCB/386-40UCB

Processor	80386DX
Processor Speed	25/33/40MHz
Chip Set	UMC
Max. Onboard DRAM	32MB
Cache	32/64/128/256KB
BIOS	AMI
Dimensions	330mm x 220mm
I/O Options	32-bit external memory card slot
NPU Options	80387/3167



CONNECTIONS			
Purpose	Location	Purpose	Location
Auxiliary keyboard	J1	Speaker	J5
Reset switch	J2 and J27	Power LED & Keylock	J6
Turbo LED	J3	External battery	J29
Turbo switch	J4 and J28	Memory expansion slot	S1

Continued on next page . . .

DIAMOND FLOWER, INC.

386-25UCB/386-33UCB/386-40UCB

... continued from previous page

USER CONFIGURABLE SETTINGS		
Function	Jumper	Position
í NPU enabled	J12	Closed
NPU disabled	J12	Open
í Factory configured - do not alter	J13	pins 2 & 3 closed
í NPU type select 80387	J14	pins 1 & 2 closed
NPU type select 3167	J14	pins 2 & 3 closed
í Factory configured - do not alter	J15	pins 1 & 2 closed
í Factory configured - do not alter	J16	pins 1 & 2 closed
í Factory configured - do not alter	J17	pins 1 & 2 closed
í Factory configured - do not alter	J18	pins 2 & 3 closed
í Factory configured - do not alter	J19	pins 2 & 3 closed
í Factory configured - do not alter	J20	Closed
í Factory configured - do not alter	J21	pins 1 & 2 closed
í Factory configured - do not alter	J22	pins 1 & 2 closed
í Factory configured - do not alter	J23	pins 1 & 2 closed
í Factory configured - do not alter	J24	pins 1 & 2 closed
í Battery select internal	J25	pins 2 & 3 closed
Battery select external	J25	pins 1 & 2 closed
í Monitor type select color	J26	Closed
Monitor type select monochrome	J26	Open

DRAM CONFIGURATION				
Size	Bank 0	Bank 1	Bank 2	Bank 3
1MB	(4) 256K x 9	NONE	NONE	NONE
2MB	(4) 256K x 9	(4) 256K x 9	NONE	NONE
3MB	(4) 256K x 9	(4) 256K x 9	(4) 256K x 9	NONE
4MB	(4) 256K x 9	(4) 256K x 9	(4) 256K x 9	(4) 256K x 9
4MB	(4) 1M x 9	NONE	NONE	NONE
5MB	(4) 256K x 9	(4) 1M x 9	NONE	NONE
6MB	(4) 256K x 9	(4) 256K x 9	(4) 1M x 9	NONE
8MB	(4) 1M x 9	(4) 1M x 9	NONE	NONE
9MB	(4) 256K x 9	(4) 1M x 9	(4) 1M x 9	NONE
10MB	(4) 256K x 9	(4) 256K x 9	(4) 1M x 9	(4) 1M x 9
12MB	(4) 1M x 9	(4) 1M x 9	(4) 1M x 9	NONE
16MB	(4) 1M x 9	(4) 1M x 9	(4) 1M x 9	(4) 1M x 9
16MB	(4) 4M x 9	NONE	NONE	NONE
20MB	(4) 1M x 9	(4) 4M x 9	NONE	NONE
24MB	(4) 1M x 9	(4) 1M x 9	(4) 4M x 9	NONE
32MB	(4) 4M x 9	(4) 4M x 9	NONE	NONE
36MB	(4) 1M x 9	(4) 4M x 9	(4) 4M x 9	NONE
40MB	(4) 1M x 9	(4) 1M x 9	(4) 4M x 9	(4) 4M x 9
48MB	(4) 4M x 9	(4) 4M x 9	(4) 4M x 9	NONE
64MB	(4) 4M x 9	(4) 4M x 9	(4) 4M x 9	(4) 4M x 9

Note: Banks 2 and 3 are utilized when a 32-bit external memory card is installed at S1.

Continued on next page...

DIAMOND FLOWER, INCORPORATED
386-25UCB/386-33UCB/386-40UCB

... continued from previous page

CACHE CONFIGURATION			
Size	Bank 0	Bank 1	TAG
32KB	(4) 8K x 8	NONE	(4) 16K x 4
64KB	(4) 8K x 8	(4) 8K x 8	(4) 16K x 4
128KB	(4) 32K x 8	NONE	(4) 16K x 4
256KB	(4) 32K x 8	(4) 32K x 8	(4) 16K x 4

CACHE JUMPER CONFIGURATION					
Size	J7	J8	J9	J10	J11
32KB	1 & 2	1 & 2	1 & 2	2 & 3	Open
64KB	1 & 2	1 & 2	2 & 3	1 & 2	Open
128KB	1 & 2	2 & 3	2 & 3	2 & 3	1 & 2
256KB	2 & 3	2 & 3	2 & 3	1 & 2	2 & 3

Note: Pins designated should be in the closed position.