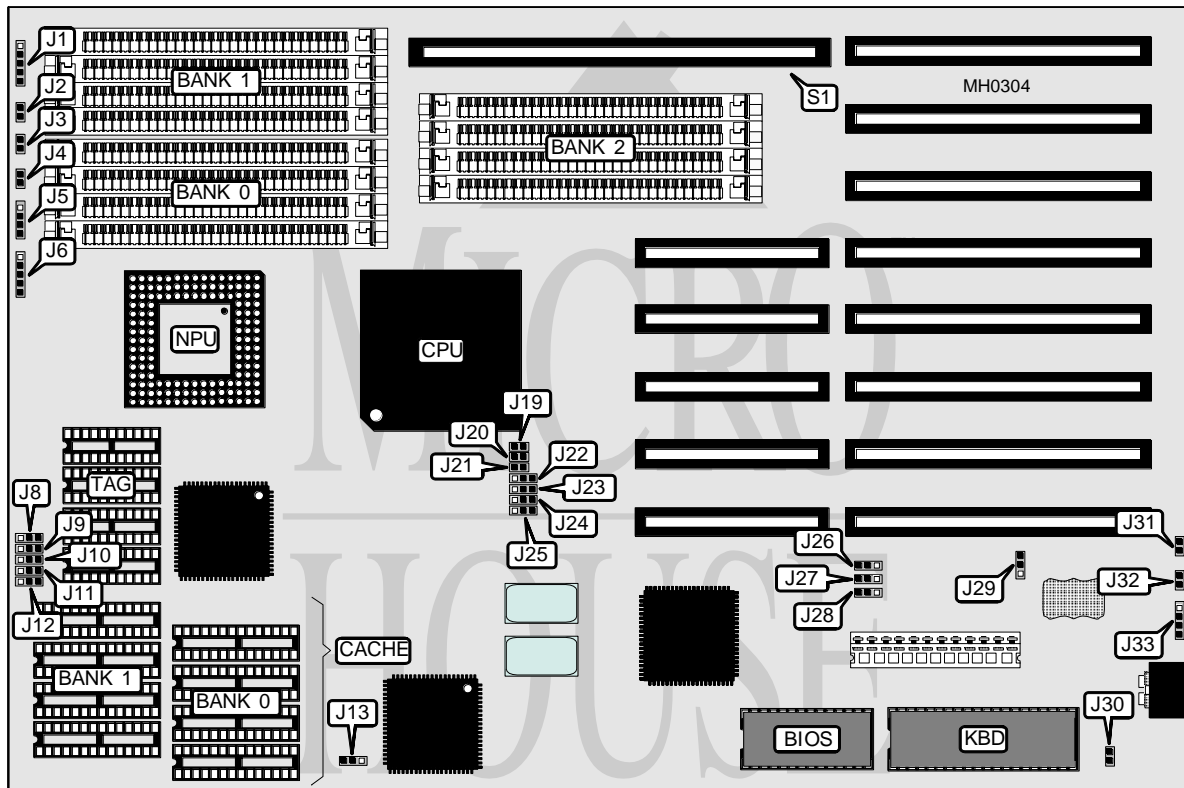


# DIAMOND FLOWER, INC.

## 486-25UCB/486-33UCB

<b>Processor</b>	80486DX
<b>Processor Speed</b>	25/33MHz
<b>Chip Set</b>	UMC
<b>Max. Onboard DRAM</b>	48MB
<b>Cache</b>	32/64/128/256KB
<b>BIOS</b>	AMI
<b>Dimensions</b>	330mm x 220mm
<b>I/O Options</b>	32-bit external memory card
<b>NPU Options</b>	4167



CONNECTIONS			
Purpose	Location	Purpose	Location
Auxiliary keyboard	J1	Speaker	J5
Reset switch	J2 and J31	Power LED & keylock	J6
Turbo LED	J3	External battery	J33
Turbo switch	J4 and J32	32-bit external memory card	S1

Continued on next page . . .

# DIAMOND FLOWER, INC.

## 486-25UCB/486-33UCB

... continued from previous page

USER CONFIGURABLE SETTINGS		
Function	Jumper	Position
í NPU enabled	J12	Closed
NPU disabled	J12	Open
í Factory configured - do not alter	J13	pins 2 & 3 closed
í Factory configured - do not alter	J18	pins 1 & 2 closed
í Factory configured - do not alter	J19	Closed
í Factory configured - do not alter	J20	Closed
í Factory configured - do not alter	J21	Closed
í Factory configured - do not alter	J22	pins 1 & 2 closed
í Factory configured - do not alter	J23	pins 1 & 2 closed
í Factory configured - do not alter	J24	pins 1 & 2 closed
í Factory configured - do not alter	J25	pins 2 & 3 closed
í Factory configured - do not alter	J26	pins 1 & 2 closed
í Factory configured - do not alter	J27	pins 1 & 2 closed
í Factory configured - do not alter	J28	Closed
í Battery type select internal	J29	pins 2 & 3 closed
Battery type select external	J29	pins 1 & 2 closed
í Monitor type select color	J30	Closed
Monitor type select monochrome	J30	Open

DRAM CONFIGURATION				
Size	Bank 0	Bank 1	Bank 2	Bank 3
1MB	(4) 256K x 9	NONE	NONE	NONE
2MB	(4) 256K x 9	(4) 256K x 9	NONE	NONE
3MB	(4) 256K x 9	(4) 256K x 9	(4) 256K x 9	NONE
4MB	(4) 256K x 9	(4) 256K x 9	(4) 256K x 9	(4) 256K x 9
4MB	(4) 1M x 9	NONE	NONE	NONE
5MB	(4) 256K x 9	(4) 1M x 9	NONE	NONE
6MB	(4) 256K x 9	(4) 256K x 9	(4) 1M x 9	NONE
8MB	(4) 1M x 9	(4) 1M x 9	NONE	NONE
9MB	(4) 256K x 9	(4) 1M x 9	(4) 1M x 9	NONE
10MB	(4) 256K x 9	(4) 256K x 9	(4) 1M x 9	(4) 1M x 9
12MB	(4) 1M x 9	(4) 1M x 9	(4) 1M x 9	NONE
16MB	(4) 1M x 9	(4) 1M x 9	(4) 1M x 9	(4) 1M x 9
16MB	(4) 4M x 9	NONE	NONE	NONE
20MB	(4) 1M x 9	(4) 4M x 9	NONE	NONE
24MB	(4) 1M x 9	(4) 1M x 9	(4) 4M x 9	NONE
32MB	(4) 4M x 9	(4) 4M x 9	NONE	NONE
36MB	(4) 1M x 9	(4) 4M x 9	(4) 4M x 9	NONE
40MB	(4) 1M x 9	(4) 1M x 9	(4) 4M x 9	(4) 4M x 9
48MB	(4) 4M x 9	(4) 4M x 9	(4) 4M x 9	NONE
64MB	(4) 4M x 9	(4) 4M x 9	(4) 4M x 9	(4) 4M x 9

Note: Bank 3 is used when a 32-bit external memory card is installed at S1.

Continued on next page...

**DIAMOND FLOWER, INC.**  
**486-25UCB/486-33UCB**

... continued from previous page

CACHE CONFIGURATION			
Size	Bank 0	Bank 1	TAG
32KB	(4) 8K x 8	NONE	(4) 16K x 4
64KB	(4) 8K x 8	(4) 8K x 8	(4) 16K x 4
128KB	(4) 32K x 8	NONE	(4) 16K x 4
256KB	(4) 32K x 8	(4) 32K x 8	(4) 16K x 4

CACHE JUMPER CONFIGURATION					
Size	J8	J9	J10	J11	J12
32KB	1 & 2	1 & 2	1 & 2	Open	2 & 3
64KB	2 & 3	1 & 2	1 & 2	Open	1 & 2
128KB	2 & 3	2 & 3	1 & 2	1 & 2	2 & 3
256KB	2 & 3	2 & 3	2 & 3	2 & 3	1 & 2

Note: Pins designated should be in the closed position.