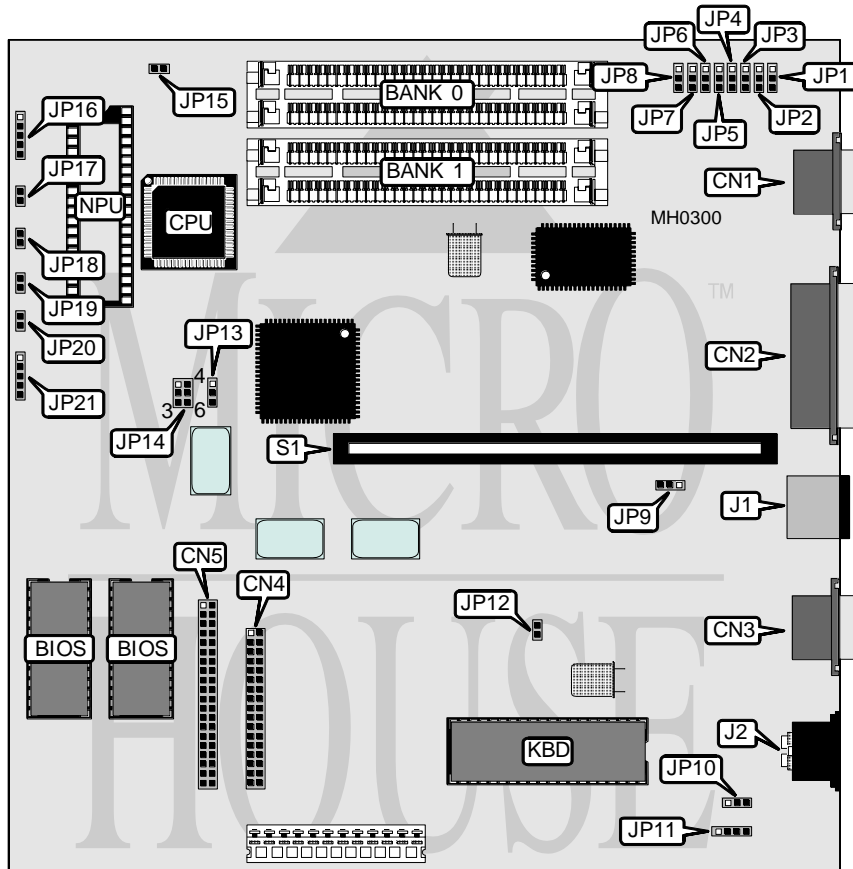


DIAMOND FLOWER, INC.

286-AIO

Processor	80286
Processor Speed	12/16MHz
Chip Set	Headland
Max. Onboard DRAM	4MB
Cache	None
BIOS	AMI
Dimensions	220mm x 220mm
I/O Options	Parallel port, serial port (2),floppy drive interface, IDE interface, PS/2 mouse port
NPU Options	80287



CONNECTIONS			
Purpose	Location	Purpose	Location
Serial port (COM2)	CN1	Auxiliary keyboard	JP16
Parallel port	CN2	Turbo LED	JP17
Serial port (COM1)	CN3	Turbo switch	JP18
Floppy drive interface	CN4	Reset switch	JP19
IDE interface	CN5	IDE LED	JP20
PS/2 mouse	J1	Power LED & keylock	JP21
Keyboard	J2	Riser card	S1
External battery	JP11		

Continued on next page . . .

DIAMOND FLOWER, INC.

286-AIO

... continued from previous page

USER CONFIGURABLE SETTINGS		
Function	Jumper	Position
í IDE interface (CN5) enabled	JP8	pins 1 & 2 closed
IDE interface (CN5) disabled	JP8	pins 2 & 3 closed
í Battery select external	JP10	pins 1 & 2 closed
Battery select internal	JP10	pins 2 & 3 closed
í Monitor type select color	JP12	Closed
Monitor type select monochrome	JP12	Open
CPU speed select 12MHz	JP13	pins 1 & 2 closed
CPU speed select 16MHz	JP13	pins 2 & 3 closed

DRAM CONFIGURATION		
Size	Bank 0	Bank 1
512KB	(2) 256K x 9	NONE
1MB	(2) 256K x 9	(2) 256K x 9
2MB	(2) 1M x 9	NONE
2.5MB	(2) 256K x 9	(2) 1M x 9
4MB	(2) 1M x 9	(2) 1M x 9

NPU SPEED CONFIGURATION		
Speed	JP14	JP15
í 8MHz	pins 2 & 5 closed	Closed
10MHz	pins 5 & 6 closed	Closed
12MHz	pins 4 & 5 closed	Open

PARALLEL PORT CONFIGURATION			
Port	JP1	JP2	JP9
LPT2/IRQ7	pins 1 & 2 closed	pins 1 & 2 closed	pins 2 & 3 closed
LPT1/IRQ7	pins 2 & 3 closed	pins 1 & 2 closed	pins 2 & 3 closed
LPT3/IRQ5	pins 1 & 2 closed	pins 2 & 3 closed	pins 1 & 2 closed
Disabled	pins 2 & 3 closed	pins 2 & 3 closed	N/A

SERIAL PORT CONFIGURATION				
COM1 (CN3)	COM2 (CN1)	JP3	JP4	JP5
Enabled	Enabled	pins 1 & 2 closed	pins 1 & 2 closed	pins 1 & 2 closed
Enabled	Disabled	pins 1 & 2 closed	pins 2 & 3 closed	pins 1 & 2 closed
Disabled	Enabled	pins 2 & 3 closed	pins 1 & 2 closed	pins 1 & 2 closed
Disabled	Disabled	pins 2 & 3 closed	pins 2 & 3 closed	pins 2 & 3 closed

FLOPPY DRIVE CONFIGURATION		
Setting	JP6	JP7
Enabled	pins 1 & 2 closed	pins 1 & 2 closed
Disabled	pins 2 & 3 closed	pins 1 & 2 closed