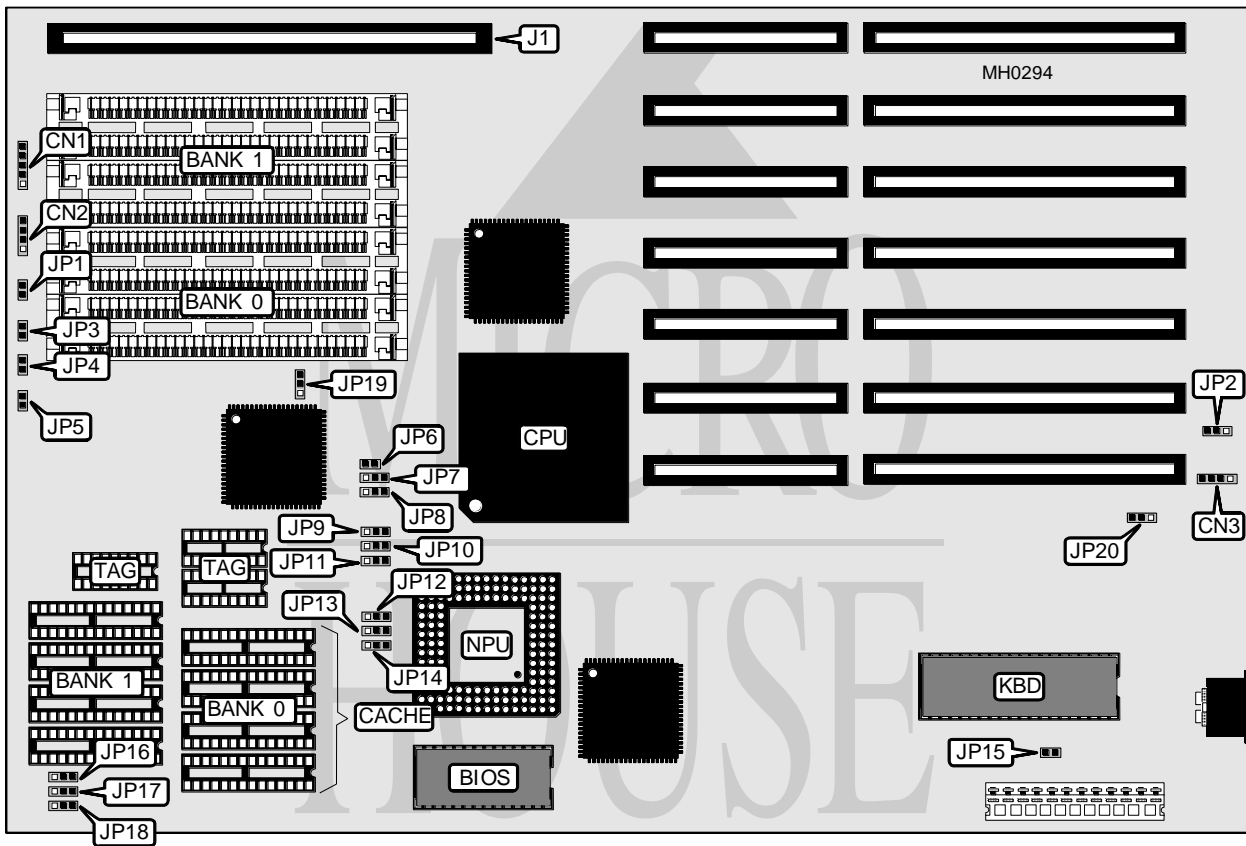


# MICROWISE, INC.

## 486A-33

<b>Processor</b>	80486SX/80487SX/80486DX
<b>Processor Speed</b>	20/25/33/50MHz
<b>Chip Set</b>	SIS
<b>Max. Onboard DRAM</b>	32MB
<b>Cache</b>	32/64/128/256KB
<b>BIOS</b>	AMI
<b>Dimensions</b>	330mm x 218mm
<b>I/O Options</b>	32-bit external memory card slot
<b>NPU Options</b>	4167



CONNECTIONS			
Purpose	Location	Purpose	Location
Power LED & keylock	CN1	Reset switch	JP1
Speaker	CN2	Turbo switch	JP3
External battery	CN3	Turbo LED	JP5
32-bit external memory card	J1		

Continued on next page . . .

## MICROWISE, INC.

## 486A-33

... continued from previous page

USER CONFIGURABLE SETTINGS		
Function	Jumper	Position
í CMOS memory normal operation	JP2	pins 1 & 2 closed
CMOS memory clear	JP2	pins 2 & 3 closed
í Factory configured - do not alter	JP4	N/A
í Monitor type select color	JP15	Closed
Monitor type select monochrome	JP15	Open
í Factory configured - do not alter	JP19	N/A
í Factory configured - do not alter	JP20	N/A

DRAM CONFIGURATION				
Size	Bank 0	Bank 1	Bank 2	Bank 3
1MB	(4) 256K x 9	NONE	NONE	NONE
2MB	(4) 256K x 9	(4) 256K x 9	NONE	NONE
4MB	(4) 1M x 9	NONE	NONE	NONE
6MB	(4) 256K x 9	(4) 256K x 9	(4) 1M x 9	NONE
8MB	(4) 1M x 9	(4) 1M x 9	NONE	NONE
10MB	(4) 256K x 9	(4) 256K x 9	(4) 1M x 9	(4) 1M x 9
12MB	(4) 1M x 9	(4) 1M x 9	(4) 1M x 9	NONE
16MB	(4) 1M x 9	(4) 1M x 9	(4) 1M x 9	(4) 1M x 9
16MB	(4) 4M x 9	NONE	NONE	NONE
18MB	(4) 256K x 9	(4) 256K x 9	(4) 4M x 9	NONE
20MB	(4) 1M x 9	(4) 4M x 9	NONE	NONE
24MB	(4) 1M x 9	(4) 1M x 9	(4) 4M x 9	NONE
32MB	(4) 4M x 9	(4) 4M x 9	NONE	NONE
36MB	(4) 1M x 9	(4) 4M x 9	(4) 4M x 9	NONE
40MB	(4) 1M x 9	(4) 1M x 9	(4) 4M x 9	(4) 4M x 9
48MB	(4) 4M x 9	(4) 4M x 9	(4) 4M x 9	NONE
64MB	(4) 4M x 9	(4) 4M x 9	(4) 4M x 9	(4) 4M x 9

Note: Banks 2 & 3 are used when a 32-bit external memory card is installed at J1.

Continued on next page ...

**MICROWISE, INC.**  
**486A-33**

... continued from previous page

CACHE CONFIGURATION			
Size	Bank 0	Bank 1	TAG
32KB	(4) 8K x 8	NONE	(3) 16K x 4
64KB	(4) 8K x 8	(4) 8K x 8	(3) 16K x 4
128KB	(4) 32K x 8	NONE	(3) 16K x 4
256KB	(4) 32K x 8	(4) 32K x 8	(3) 16K x 4

CACHE JUMPER CONFIGURATION									
Size	JP9	JP10	JP11	JP12	JP13	JP14	JP16	JP17	JP18
32KB	1 & 2	1 & 2	1 & 2	1 & 2	1 & 2	1 & 2	1 & 2	1 & 2	1 & 2
64KB	1 & 2	1 & 2	2 & 3	1 & 2	2 & 3	1 & 2	2 & 3	1 & 2	1 & 2
128KB	1 & 2	2 & 3	2 & 3	2 & 3	2 & 3	1 & 2	1 & 2	1 & 2	2 & 3
256KB	2 & 3	2 & 3	2 & 3	2 & 3	2 & 3	2 & 3	2 & 3	2 & 3	2 & 3

Note: Pins designated should be in the closed position.

CPU TYPE CONFIGURATION			
Type	JP6	JP7	JP8
80486SX	Open	Open	pins 2 & 3 closed
80487SX	Closed	pins 2 & 3 closed	pins 1 & 2 closed
80486DX	Closed	pins 1 & 2 closed	pins 1 & 2 closed