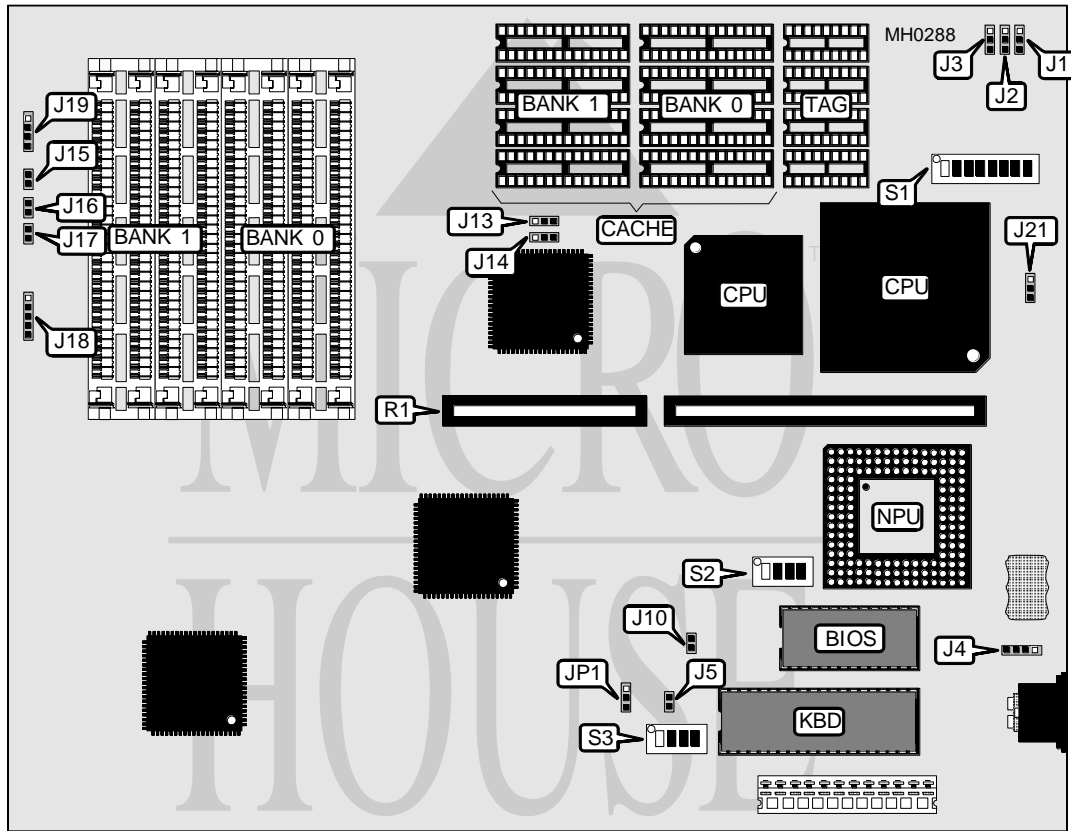


EFA CORPORATION

ECA 510

Processor	80386DX/80486SX/80486DX
Processor Speed	16/20/25/33/40/50MHz
Chip Set	UMC
Max. Onboard DRAM	32MB
Cache	64/128/256KB
BIOS	AMI
Dimensions	280mm x 218mm
I/O Options	None
NPU Options	4167



CONNECTIONS			
Purpose	Location	Purpose	Location
External battery	J4	Power LED & keylock	J18
Reset switch	J15	Speaker	J19
Turbo LED	J16	Riser card	R1
Turbo switch	J17		

Continued on next page . . .

EFA CORPORATION
ECA 510

... continued from previous page

USER CONFIGURABLE SETTINGS		
Function	Jumper/Switch	Position
í Monitor type select color	J5	Open
Monitor type select monochrome	J5	Closed
í Factory configured - do not alter	J10	N/A
í Factory configured - do not alter	J21	N/A
í BIOS type select 27512	JP1	pins 2 & 3 closed
BIOS type select 271024	JP1	pins 1 & 2 closed
í Factory configured - do not alter	S1/5	N/A
í Factory configured - do not alter	S1/8	N/A

DRAM CONFIGURATION		
Size	Bank 0	Bank 1
1MB	(4) 256K x 9	NONE
2MB	(4) 256K x 9	(4) 256K x 9
4MB	(4) 1M x 9	NONE
5MB	(4) 256K x 9	(4) 1M x 9
8MB	(4) 1M x 9	(4) 1M x 9
16MB	(4) 4M x 9	NONE
20MB	(4) 1M x 9	(4) 4M x 9
32MB	(4) 4M x 9	(4) 4M x 9

CACHE CONFIGURATION			
Size	Bank 0	Bank 1	TAG
64KB	(4) 8K x 8	(4) 8K x 8	(4) 16K x 4
128KB	(4) 32K x 8	NONE	(4) 16K x 4
256KB	(4) 32K x 8	(4) 32K x 8	(4) 16K x 4

CACHE JUMPER CONFIGURATION					
Size	J1	J2	J3	J13	J14
64KB	2 & 3	1 & 2	1 & 2	1 & 2	N/A
128KB	2 & 3	2 & 3	1 & 2	2 & 3	1 & 2
256KB	2 & 3	2 & 3	2 & 3	1 & 2	2 & 3

Note: Pins designated should be in the closed position.

CPU SWITCH CONFIGURATION (A)										
Type	S1/1	S1/2	S1/3	S1/4	S1/6	S1/7	S3/1	S3/2	S3/3	S3/4
80386DX	On	On	On	On	Off	Off	On	On	Off	Off
80486SX	Off	Off	Off	Off	On	On	Off	Off	On	On
80486DX	Off	Off	Off	Off	On	On	On	On	Off	Off

Note: All CPU configurations (Tables A & B) must be set for proper operation.

Continued on next page...

EFA CORPORATION
ECA 510

... continued from previous page

CPU TYPE CONFIGURATION (B)				
Type	S2/1	S2/2	S2/3	S2/4
80386DX-16	Off	Off	On	On
80386DX-20	Off	Off	On	Off
80386DX-33	On	On	Off	On
80386DX-40	On	On	On	On
80486SX-20	On	Off	On	Off
80486DX-25	On	Off	Off	Off
80486DX-33	On	Off	Off	On
80486DX-50	Off	Off	Off	Off