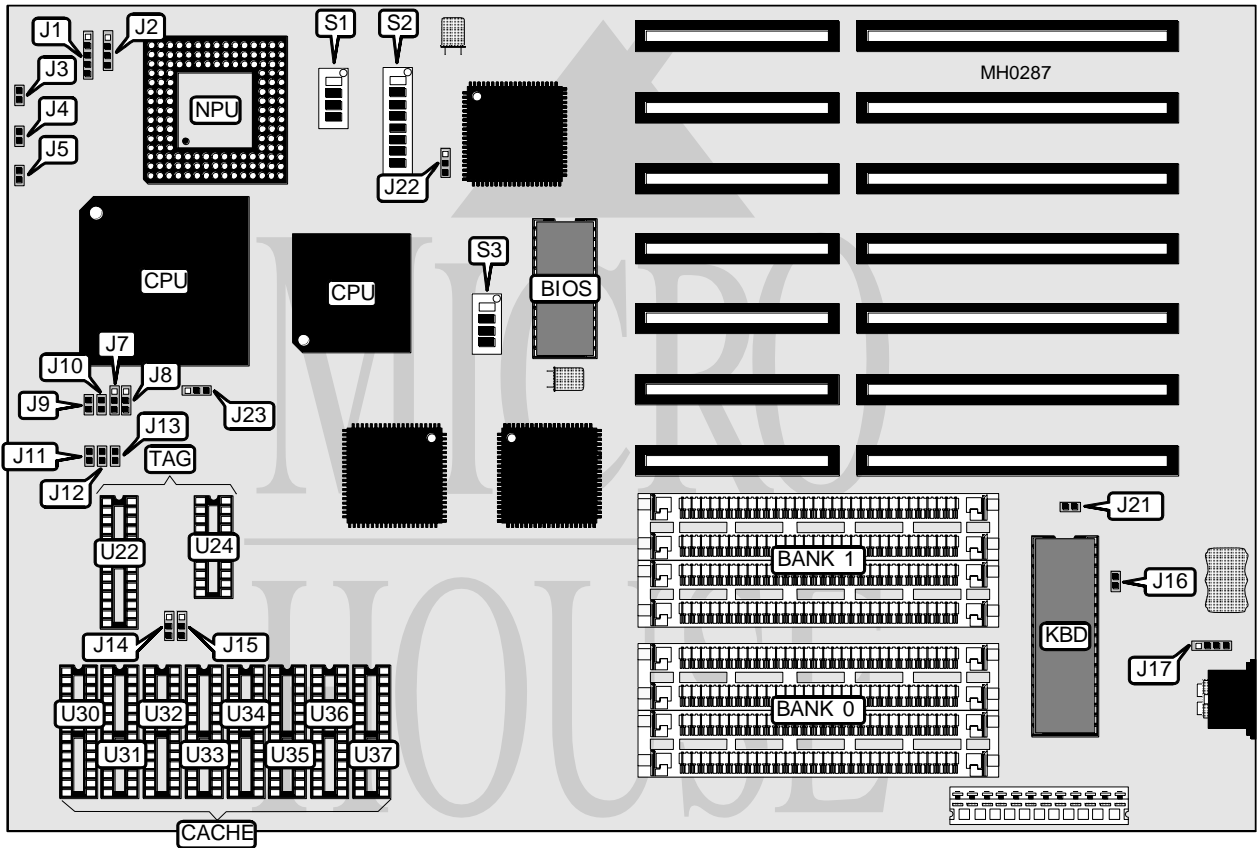


EFA CORPORATION

ECA 34M33

Processor	80386DX/80486SX/80486DX
Processor Speed	16/20/25/33/40/50MHz
Chip Set	UMC
Max. Onboard DRAM	32MB
Cache	64/128/256KB
BIOS	AMI
Dimensions	330mm x 218mm
I/O Options	None
NPU Options	4167



CONNECTIONS			
Purpose	Location	Purpose	Location
Power LED & keylock	J1	Turbo LED	J4
Speaker	J2	Turbo switch	J5
Reset switch	J3	External battery	J17

Continued on next page . . .

EFA CORPORATION
E C A 3 4 M 3 3

... continued from previous page

USER CONFIGURABLE SETTINGS		
Function	Jumper/Switch	Position
í Monitor type select color	J16	Open
Monitor type select monochrome	J16	Closed
í Factory configured - do not alter	J21	N/A
í BIOS type select 27512	J22	pins 2 & 3 closed
BIOS type select 271024	J22	pins 1 & 2 closed
í CPU type select 80486DX	J23	pins 2 & 3 closed
CPU type select 80486SX	J23	pins 1 & 2 closed
CPU type select 80386DX	J23	Open
í Factory configured - do not alter	S2/5	N/A
í Factory configured - do not alter	S2/8	N/A

DRAM CONFIGURATION		
Size	Bank 0	Bank 1
1MB	(4) 256K x 9	NONE
2MB	(4) 256K x 9	(4) 256K x 9
4MB	(4) 1M x 9	NONE
5MB	(4) 256K x 9	(4) 1M x 9
8MB	(4) 1M x 9	(4) 1M x 9
16MB	(4) 4M x 9	NONE
20MB	(4) 1M x 9	(4) 4M x 9
32MB	(4) 4M x 9	(4) 4M x 9

CACHE CONFIGURATION				
Size	Bank 0	Bank 1	TAG (U22)	TAG (U24)
64KB	(4) 8K x 8	(4) 8K x 8	(1) 32K x 8	(1) 16K x 4
128KB	(4) 32K x 8	NONE	(1) 32K x 8	(1) 16K x 4
256KB	(4) 32K x 8	(4) 32K x 8	(1) 32K x 8	(1) 16K x 4

CACHE JUMPER CONFIGURATION									
Size	J7	J8	J9	J10	J11	J12	J13	J14	J15
64KB	2 & 3	2 & 3	Open	Open	Open	Open	Closed	1 & 2	Open
128KB	1 & 2	2 & 3	Open	Closed	Open	Closed	Closed	2 & 3	1 & 2
256KB	1 & 2	1 & 2	Closed	Closed	Closed	Closed	Closed	1 & 2	2 & 3

Note: Pins designated should be in the closed position.

Continued on next page . . .

EFA CORPORATION

E C A 3 4 M 3 3

... continued from previous page

CPU TYPE CONFIGURATION (A)				
Type	S3/1	S3/2	S3/3	S3/4
80386DX-16	Off	Off	On	On
80386DX-20	Off	Off	On	Off
80386DX-33	On	On	Off	On
80386DX-40	On	On	On	On
80486SX-20	On	Off	On	Off
80486DX-25	On	Off	Off	Off
80486DX-33	On	Off	Off	On
80486DX-50	Off	On	Off	Off

Note: All CPU configurations (Tables A, B & Jumper J23) must be set for proper operation.

CPU TYPE CONFIGURATION (B)					
Type	S1/1	S1/2	S1/3	S1/4	S2/1
80386DX	On	On	Off	Off	On
80486SX	Off	Off	On	On	Off
80486DX	On	On	Off	Off	Off

CPU TYPE CONFIGURATION (B CON'T)					
Type	S2/2	S2/3	S2/4	S2/6	S2/7
80386DX	On	On	On	Off	Off
80486SX	Off	Off	Off	On	On
80486DX	Off	Off	Off	On	On