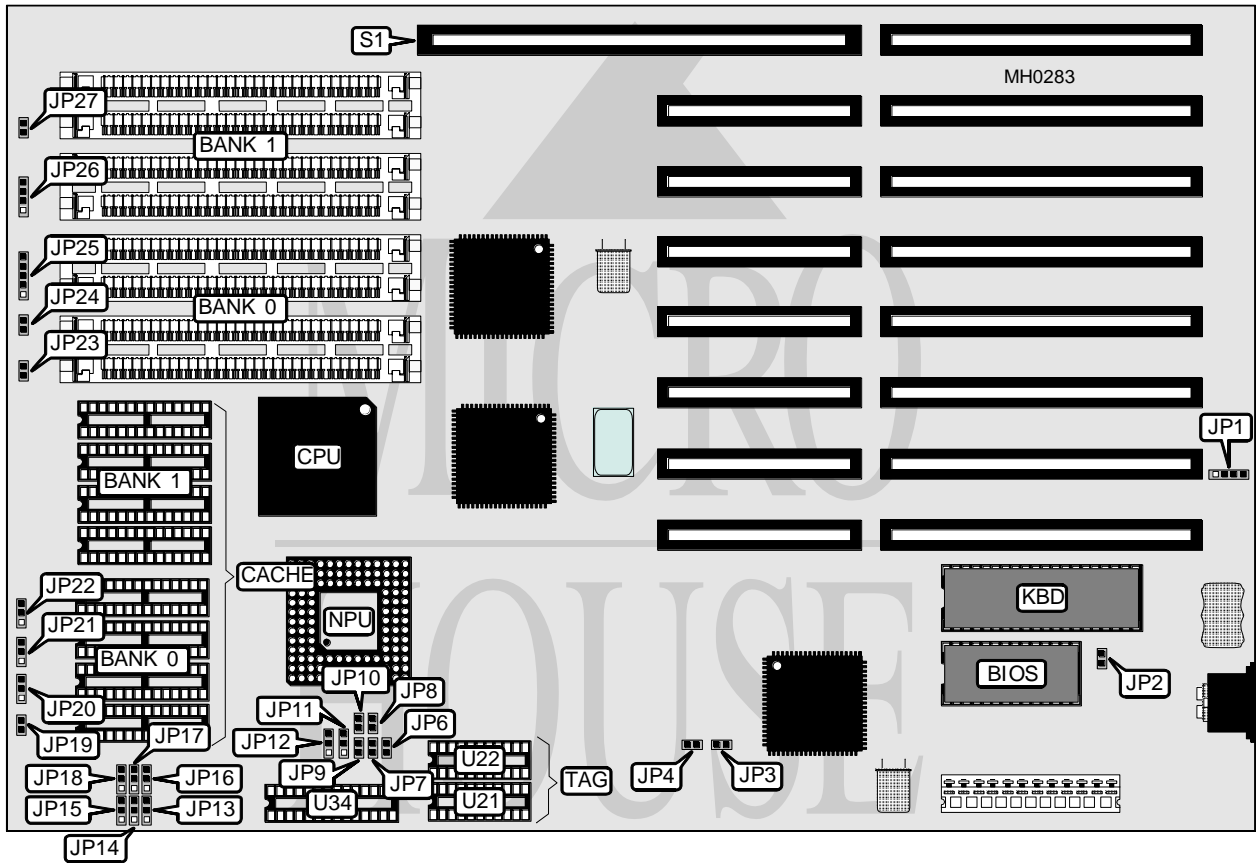


EVERSOURCE COMPUTERS, INC.

ETE Q 80386 33/40

Processor	80386DX
Processor Speed	25/33/40MHz
Chip Set	ETE Q
Max. Onboard DRAM	32MB
Cache	32/64/128/256KB
BIOS	AMI
Dimensions	330mm x 218mm
I/O Options	32-bit external memory card
NPU Options	80387/3167/3167 daughterboard



CONNECTIONS			
Purpose	Location	Purpose	Location
External battery	JP1	Speaker	JP26
Turbo LED	JP23	Reset switch	JP27
Turbo switch	JP24	32-bit external memory card	S1
Power LED & keylock	JP25		

Continued on next page . . .

EVERSOURCE COMPUTERS, INC.
ETE Q 80386 33/40

... continued from previous page

USER CONFIGURABLE SETTINGS		
Function	Jumper	Position
í Battery select internal	JP1	pins 2 & 3 closed
Battery select external	JP1	Closed
í Monitor type select monochrome	JP2	Open
Monitor type select color	JP2	Closed

DRAM CONFIGURATION		
Size	Bank 0	Bank 1
1MB	(4) 256K x 9	NONE
2MB	(4) 256K x 9	(4) 256K x 9
4MB	(4) 1M x 9	NONE
8MB	(4) 1M x 9	(4) 1M x 9
16MB	(4) 4M x 9	NONE
32MB	(4) 4M x 9	(4) 4M x 9

CACHE CONFIGURATION				
Size	Bank 0	Bank 1	TAG (U21 & U22)	TAG (U34)
32KB	(4) 8K x 8	NONE	(2) 4K x 4	NONE
32KB	(4) 8K x 8	NONE	(2) 16K x 4	NONE
64KB	(4) 8K x 8	(4) 8K x 8	(2) 4K x 4	NONE
64KB	(4) 8K x 8	(4) 8K x 8	(2) 16K x 4	NONE
128KB	(4) 32K x 8	NONE	NONE	(1) 8K x 8
128KB	(4) 32K x 8	NONE	(2) 16K x 4	NONE
256KB	(4) 32K x 8	(4) 32K x 8	(2) 16K x 4	NONE

CACHE JUMPER CONFIGURATION						
Size	JP6	JP7	JP8	JP9	JP10	JP11
32KB	Open	Open	Open	Open	Closed	1 & 2
32KB	Open	Open	Closed	Closed	Open	1 & 2
64KB	Open	Open	Open	Closed	Open	1 & 2
64KB	Open	Open	Closed	Closed	Open	1 & 2
128KB	Closed	Open	Closed	Closed	Open	1 & 2
128KB	Closed	Open	Closed	Closed	Open	1 & 2
256KB	Closed	Closed	Open	Closed	Open	2 & 3

Notes: Pins designated should be in the closed position.

Continued on next page . . .

EVERSOURCE COMPUTERS, INC.
ETE Q 80386 33/40

... continued from previous page

CACHE JUMPER CONFIGURATION (CON'T)						
Size	JP12	JP13	JP14	JP15	JP16	JP17
32KB	2 & 3	1 & 2	1 & 2	1 & 2	1 & 2	2 & 3
32KB	2 & 3	1 & 2	1 & 2	1 & 2	1 & 2	1 & 2
64KB	1 & 2	2 & 3	1 & 2	1 & 2	2 & 3	2 & 3
64KB	2 & 3	2 & 3	1 & 2	1 & 2	2 & 3	1 & 2
128KB	1 & 2	2 & 3	2 & 3	2 & 3	2 & 3	Open
128KB	2 & 3	2 & 3	2 & 3	2 & 3	2 & 3	Open
256KB	1 & 2	2 & 3	2 & 3	2 & 3	2 & 3	Open

Notes: Pins designated should be in the closed position.

CACHE JUMPER CONFIGURATION (CON'T)					
Size	JP18	JP19	JP20	JP21	JP22
32KB	1 & 2	Open	2 & 3	2 & 3	2 & 3
32KB	Open	Open	2 & 3	2 & 3	2 & 3
64KB	Open	Open	1 & 2	1 & 2	2 & 3
64KB	Open	Open	2 & 3	1 & 2	2 & 3
128KB	1 & 2	Closed	1 & 2	2 & 3	1 & 2
128KB	1 & 2	Closed	2 & 3	2 & 3	1 & 2
256KB	Open	Closed	1 & 2	1 & 2	2 & 3

Notes: Pins designated should be in the closed position.

NPU CONFIGURATION		
Setting	JP3	JP4
disabled	Open	Open
80387	Closed	Open
3167	Open	Closed
80387 and 3167 on daughterboard	Closed	Closed