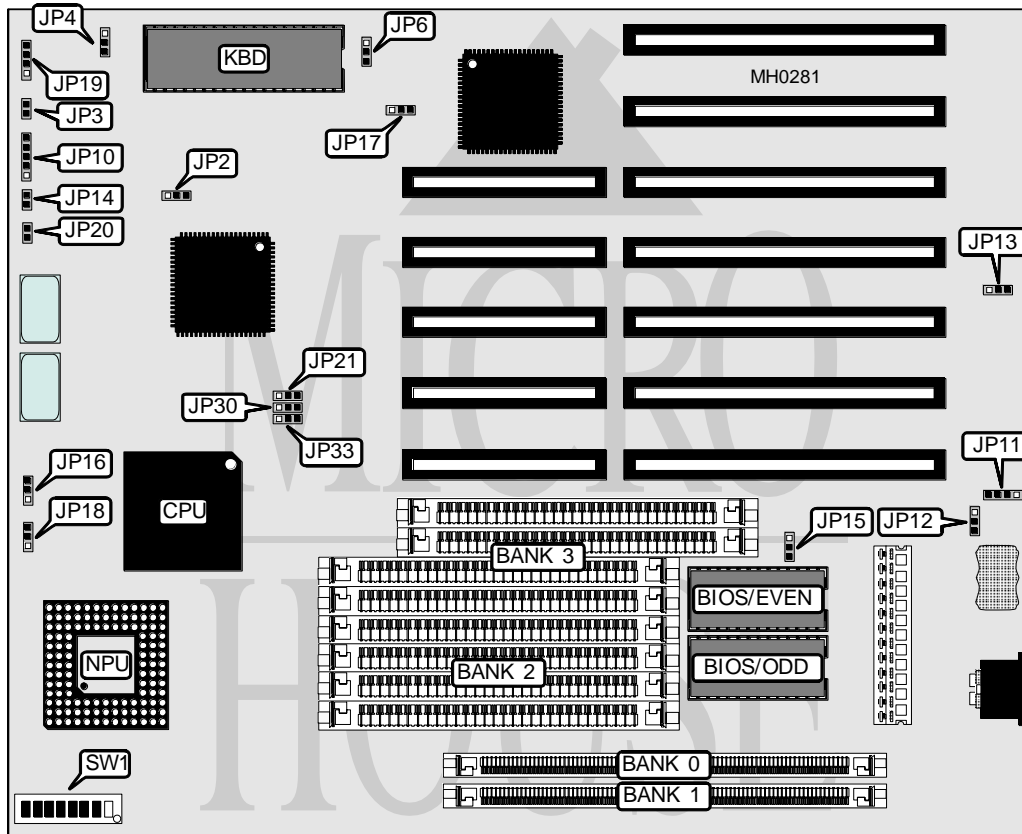


ADVANCED COMPUTER TECHNOLOGY, LTD.

T386-25/H S

Processor	80386DX
Processor Speed	25MHz
Chip Set	ACT
Max. Onboard DRAM	16MB
Cache	None
BIOS	AMI
Dimensions	270mm x 220mm
I/O Options	None
NPU Options	80387/3167



CONNECTIONS			
Purpose	Location	Purpose	Location
Turbo LED	JP3	Reset switch	JP14
Power LED & keylock	JP10	Speaker	JP19
External battery	JP11	Turbo switch	JP20

Continued on next page . . .

ADVANCED COMPUTER TECHNOLOGY, LTD.
T386-25/HS

... continued from previous page

USER CONFIGURABLE SETTINGS		
Function	Jumper	Position
í Monitor type select CGA	JP6	pins 2 & 3 closed
Monitor type select EGA/VGA/monochrome	JP6	pins 1 & 2 closed
í Battery select internal	JP12	pins 2 & 3 closed
Battery select external	JP12	pins 1 & 2 closed
í Power good signal detect from power supply	JP13	pins 1 & 2 closed
Power good signal detect from CPU	JP13	pins 2 & 3 closed
í DRAM select fast refresh	JP15	pins 2 & 3 closed
DRAM select normal refresh	JP15	pins 1 & 2 closed
í Parity check enabled	JP16	pins 2 & 3 closed
Parity check disabled	JP16	pins 1 & 2 closed

DRAM CONFIGURATION				
Size	Bank 0	Bank 1	Bank 2	Bank 3
1MB	(1) 256K x 36	NONE	NONE	NONE
1MB	NONE	NONE	(4) 256K x 9	NONE
2MB	(1) 256K x 36	(1) 256K x 36	NONE	NONE
2MB	NONE	NONE	(4) 256K x 9	(4) 256K x 9
3MB	(1) 256K x 36	(1) 256K x 36	(4) 256K x 9	NONE
4MB	(1) 256K x 36	(1) 256K x 36	(4) 256K x 9	(4) 256K x 9
6MB	(1) 256K x 36	(1) 256K x 36	(4) 1M x 9	NONE
10MB	(1) 256K x 36	(1) 256K x 36	(4) 1M x 9	(4) 1M x 9
16MB	NONE	NONE	(4) 4M x 9	NONE

DRAM JUMPER CONFIGURATION					
Size	JP17	JP18	JP21	JP30	JP33
1MB	2 & 3	2 & 3	2 & 3	2 & 3	2 & 3
1MB	2 & 3	2 & 3	1 & 2	1 & 2	1 & 2
2MB	2 & 3	2 & 3	2 & 3	2 & 3	2 & 3
2MB	2 & 3	2 & 3	1 & 2	1 & 2	1 & 2
3MB	2 & 3	2 & 3	2 & 3	2 & 3	2 & 3
4MB	2 & 3	2 & 3	2 & 3	2 & 3	2 & 3
6MB	2 & 3	2 & 3	2 & 3	2 & 3	2 & 3
10MB	2 & 3	2 & 3	2 & 3	2 & 3	2 & 3
16MB	1 & 2	1 & 2	1 & 2	1 & 2	1 & 2

Note: Pins designated should be in the closed position.

Continued on next page ...

ADVANCED COMPUTER TECHNOLOGY, LTD.
T386-25/H S

... continued from previous page

DRAM SWITCH CONFIGURATION						
Size	SW1/3	SW1/4	SW1/5	SW1/6	SW1/7	SW1/8
1MB	Off	Off	Off	Off	Off	Off
1MB	Off	Off	Off	Off	Off	Off
2MB	Off	Off	On	Off	Off	On
2MB	Off	Off	On	Off	Off	On
3MB	Off	Off	On	Off	On	Off
4MB	On	On	On	Off	On	On
6MB	Off	Off	On	On	On	Off
10MB	Off	On	On	On	On	On
16MB	Off	Off	Off	On	Off	Off

DRAM WAIT STATE CONFIGURATION		
Size	SW1/1	SW1/2
Refresh select 1 per wait state	Off	Off
Refresh select 2 per wait state	Off	On
Refresh select 4 per wait state	On	Off
Refresh select 8 per wait state	On	On

NPU CONFIGURATION		
Type	JP2	JP4
80387	pins 1 & 2 closed	pins 2 & 3 closed
3167	pins 2 & 3 closed	pins 2 & 3 closed
Disabled	pins 1 & 2 closed	pins 1 & 2 closed