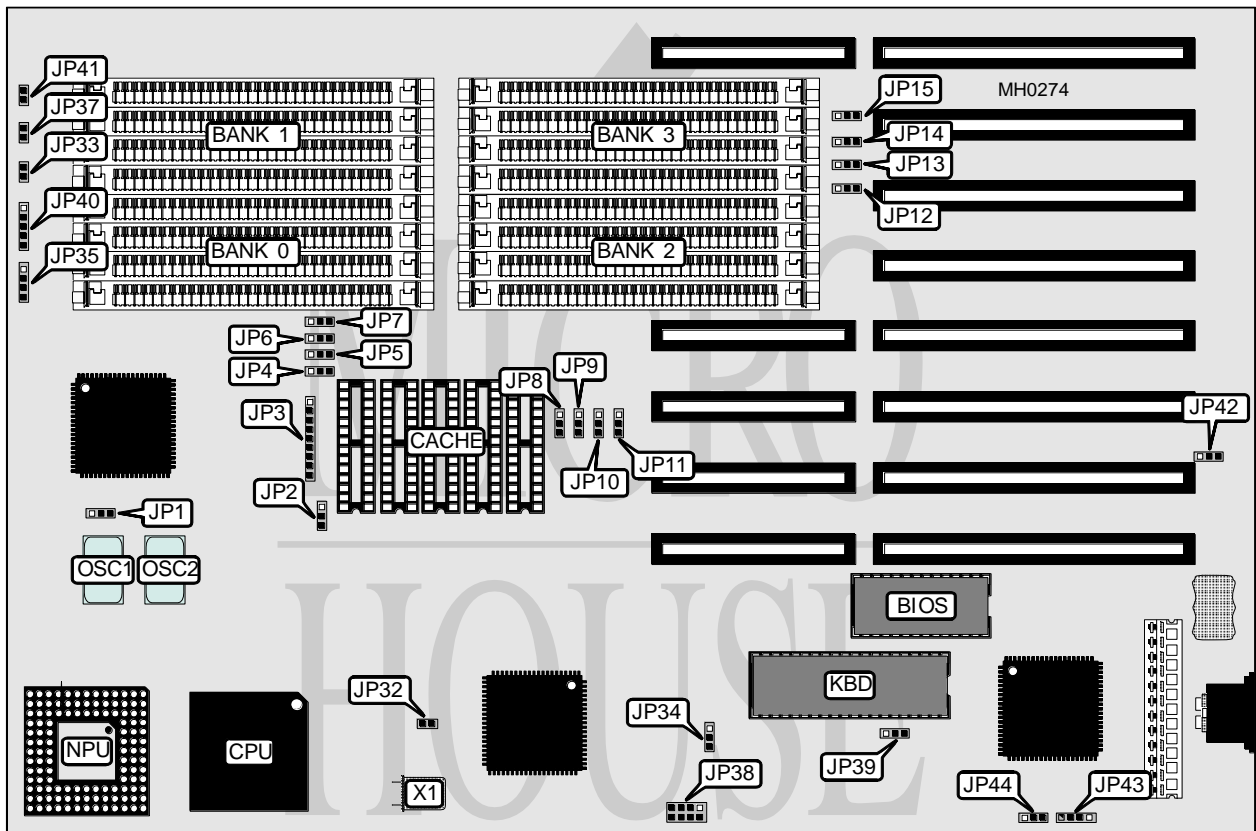


# ADVANCED COMPUTER TECHNOLOGY, LTD.

## C386

<b>Processor</b>	80386DX
<b>Processor Speed</b>	25/33/40MHz
<b>Chip Set</b>	ACT
<b>Max. Onboard DRAM</b>	16MB
<b>Cache</b>	32/64/128KB
<b>BIOS</b>	AMI
<b>Dimensions</b>	330mm x 218mm
<b>I/O Options</b>	None
<b>NPU Options</b>	80387/3167



CONNECTIONS			
Purpose	Location	Purpose	Location
Turbo switch	JP33	Power LED & Keylock	JP40
Speaker	JP35	Reset switch	JP41
Turbo LED	JP37	External battery	JP43

Continued on next page . . .

**ADVANCED COMPUTER TECHNOLOGY, LTD.**  
**C386**

... continued from previous page

USER CONFIGURABLE SETTINGS		
Function	Jumper	Position
í CPU speed select 33MHz	JP1	pins 1 & 2 closed
CPU speed select 25MHz or 40MHz	JP1	pins 2 & 3 closed
í Cache enabled	JP4	pins 1 & 2 closed
Cache disabled	JP4	pins 2 & 3 closed
í I/O channel RAM cacheable	JP5	pins 1 & 2 closed
I/O channel RAM non-cacheable	JP5	pins 2 & 3 closed
í System BIOS cacheable	JP6	pins 1 & 2 closed
System BIOS non-cacheable	JP6	pins 2 & 3 closed
í Video BIOS cacheable	JP7	pins 1 & 2 closed
Video BIOS non-cacheable	JP7	pins 2 & 3 closed
í DRAM speed select fast (70 - 120ns)	JP15	pins 1 & 2 closed
DRAM speed select slow (100 - 150ns)	JP15	pins 2 & 3 closed
í Parity check enabled	JP32	Closed
Parity check disabled	JP32	Open
í Bus speed select 8MHz	JP34	pins 1 & 2 closed
Bus speed select 11MHz	JP34	pins 2 & 3 closed
í Keyboard controller turbo pin select 30	JP38	pins 3 & 4 closed
Keyboard controller turbo pin select 24	JP38	pins 5 & 6 closed
Keyboard controller turbo pin select 23	JP38	pins 7 & 8 closed
Keyboard controller turbo pin select none	JP38	pins 1 & 2 closed
í Monitor type select color	JP39	pins 1 & 2 closed
Monitor type select monochrome	JP39	pins 2 & 3 closed
í Power good signal detect from power supply	JP42	pins 1 & 2 closed
Power good signal detect from board	JP42	pins 2 & 3 closed
í Battery select internal	JP44	pins 1 & 2 closed
Battery select external	JP44	pins 2 & 3 closed

CACHE CONFIGURATION	
Size	Bank 0
32KB	(5) 8K x 8
128KB	(5) 32K x 8

CACHE JUMPER CONFIGURATION		
Size	JP2	JP3
32KB	pins 2 & 3 closed	pins 2 & 3, 4 & 5, 6 & 7, 8 & 9 closed
128KB	pins 1 & 2 closed	pins 1 & 2, 3 & 4, 5 & 6, 7 & 8 closed

Continued on next page . . .

# ADVANCED COMPUTER TECHNOLOGY, LTD.

## C386

... continued from previous page

DRAM CONFIGURATION				
Size	Bank 0	Bank 1	Bank 2	Bank 3
1MB	(4) 256K x 9	NONE	NONE	NONE
2MB	(4) 256K x 9	(4) 256K x 9	NONE	NONE
4MB	(4) 1M x 9	NONE	NONE	NONE
6MB	(4) 256K x 9	(4) 256K x 9	(4) 1M x 9	NONE
8MB	(4) 1M x 9	(4) 1M x 9	NONE	NONE
10MB	(4) 256K x 9	(4) 256K x 9	(4) 1M x 9	(4) 1M x 9
12MB	(4) 1M x 9	(4) 1M x 9	(4) 1M x 9	NONE
16MB	(4) 1M x 9	(4) 1M x 9	(4) 1M x 9	(4) 1M x 9

DRAM JUMPER CONFIGURATION							
Size	JP8	JP9	JP10	JP11	JP12	JP13	JP14
1MB	1 & 2	2 & 3	2 & 3	2 & 3	1 & 2	1 & 2	1 & 2
2MB	1 & 2	1 & 2	2 & 3	2 & 3	2 & 3	1 & 2	1 & 2
4MB	1 & 2	2 & 3	2 & 3	1 & 2	1 & 2	1 & 2	2 & 3
6MB	2 & 3	1 & 2	2 & 3	1 & 2	1 & 2	2 & 3	1 & 2
8MB	1 & 2	1 & 2	2 & 3	1 & 2	2 & 3	1 & 2	2 & 3
10MB	2 & 3	2 & 3	1 & 2	1 & 2	2 & 3	2 & 3	1 & 2
12MB	1 & 2	2 & 3	1 & 2	1 & 2	1 & 2	2 & 3	2 & 3
16MB	1 & 2	1 & 2	1 & 2	1 & 2	2 & 3	2 & 3	2 & 3

Note: Pins designated should be in the closed position.