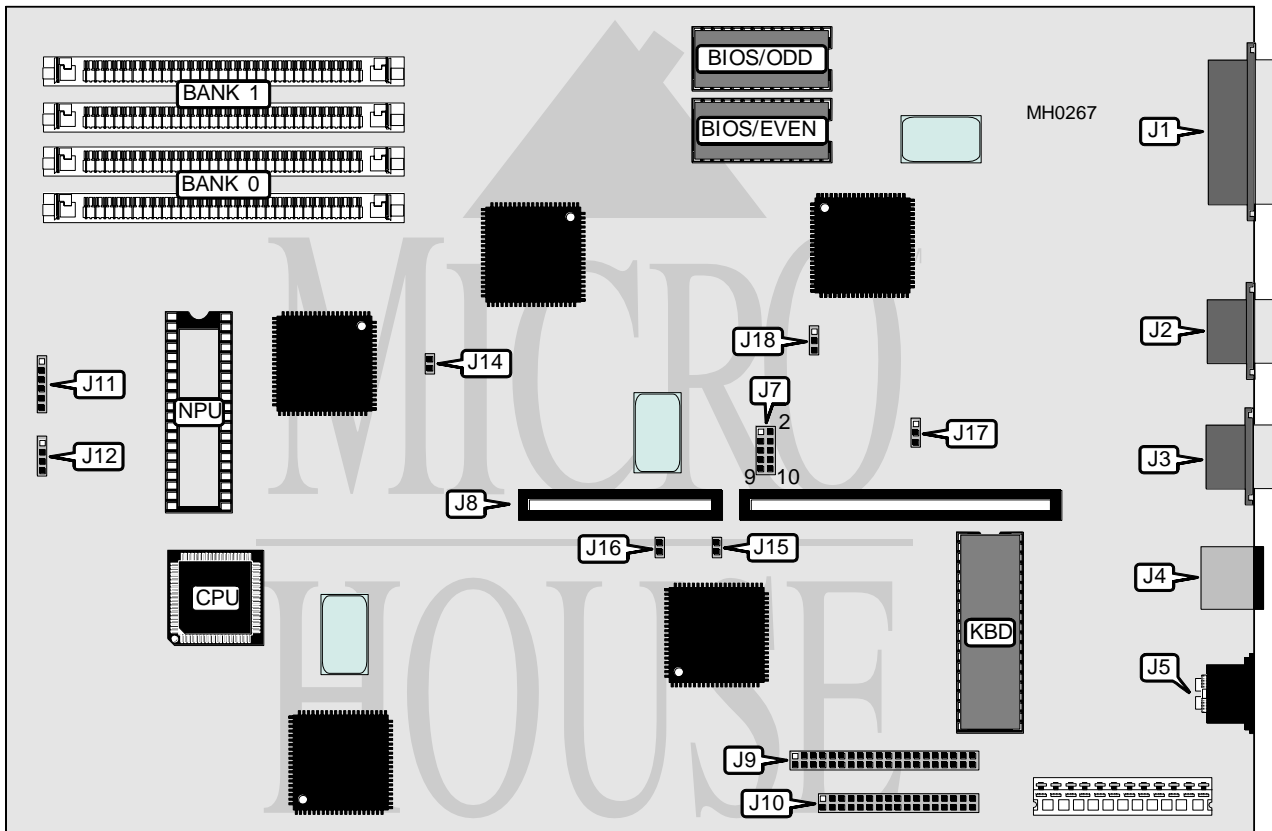


PACKARD BELL

286X PWB-2149 (FORCE 1/AXCEL 1+/ PB286N/LEGEND IV/PACK-MATE III)

Processor	80286
Processor Speed	12/16MHz
Chip Set	TI
Max. Onboard DRAM	4MB
Cache	None
BIOS	Phoenix
Dimensions	330mm x 218mm
I/O Options	Parallel port, serial ports (2), PS/2 mouse port, floppy drive interface, IDE interface
NPU Options	80287



Continued on next page . . .

PACKARD BELL

286X PWB-2149 (FORCE 1/AXCEL 1+/
PB286N/LEGEND IV/PACK-MATE III)

... continued from previous page

CONNECTIONS			
Purpose	Location	Purpose	Location
Parallel port	J1	Reset switch	J11/pin 1
Serial port (COM2)	J2	Turbo switch	J11/pin 2
Serial port (COM1)	J3	Power ready	J11/pin 3
PS/2 mouse port	J4	IDE LED	J11/pin 4
Keyboard	J5	Turbo LED	J11/pin 5
Expansion slot card	J8	Ground	J11/pin 6
IDE interface	J9	External battery	J12
Floppy interface	J10		

USER CONFIGURABLE SETTINGS		
Function	Jumper	Position
í Monitor type select color	J7	pins 1 & 2 closed
Monitor type select monochrome	J7	pins 1 & 2 open
í Floppy drive enabled	J7	pins 3 & 4 closed
Floppy drive disabled	J7	pins 3 & 4 open
í IDE enabled	J7	pins 5 & 6 closed
IDE disabled	J7	pins 5 & 6 open
í COM1 (J3) enabled	J7	pins 7 & 8 closed
COM1 (J3) disabled	J7	pins 7 & 8 open
í COM2 (J2) enabled	J7	pins 9 & 10 closed
COM2 (J2) disabled	J7	pins 9 & 10 open
í DRAM select 0 wait states	J14	Closed
DRAM select 1 wait state	J14	Open
í DRAM module type select 256K x 9	J15	Closed
DRAM module type select 1M x 9	J15	Open
í 384KB relocation enabled	J16	Open
384KB relocation disabled	J16	Closed

DRAM CONFIGURATION		
Size	Bank 0	Bank 1
1MB	(2) 256K x 9	(2) 256K x 9
2MB	(2) 1M x 9	NONE
4MB	(2) 1M x 9	(2) 1M x 9

PARALLEL PORT IRQ CONFIGURATION		
IRQ	J17	J18
LPT1 at IRQ7	pins 1 & 2 closed	pins 2 & 3 closed
LPT2 at IRQ5	pins 2 & 3 closed	pins 1 & 2 closed