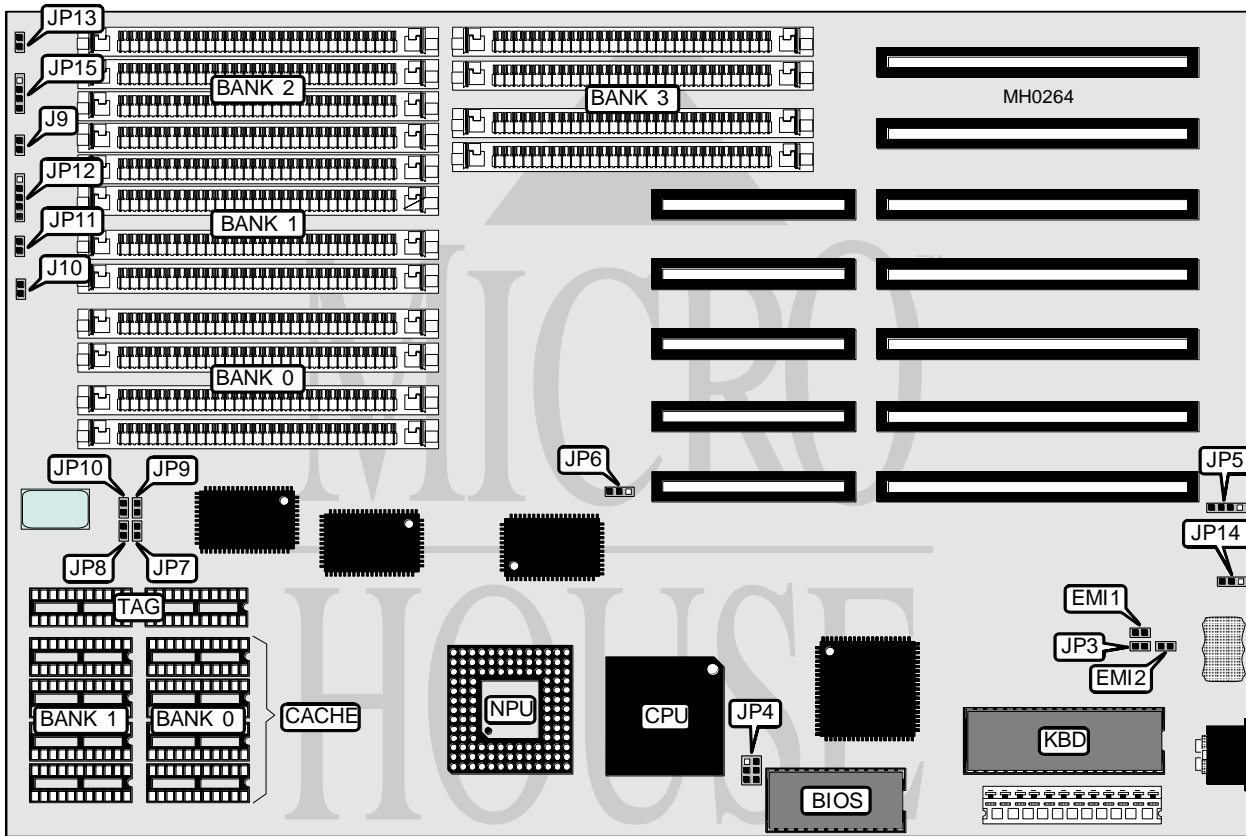


EFA CORPORATION

BABY 386-33S

Processor 80386DX
Processor Speed 25/33MHz
Chip Set SIS
Max. Onboard DRAM 16MB
Cache 32/64KB
BIOS AMI
Dimensions 330mm x 218mm
I/O Options None
NPU Options 80387/3167



CONNECTIONS

Purpose	Location	Purpose	Location
Power LED	J9	Front panel power LED & keylock	JP12
Turbo LED	J10	Turbo switch	JP13
External battery	JP5	Speaker	JP15
Reset switch	JP11		

Continued on next page . . .

EFA CORPORATION

BABY 386-33S

... continued from previous page

USER CONFIGURABLE SETTINGS		
Function	Jumper	Position
í Factory configured - do not alter	EMI1	Closed
í Factory configured - do not alter	EMI2	Closed
í Monitor type select color	JP3	Closed
Monitor type select monochrome	JP3	Open
í Factory configured - do not alter	JP4	Open
í Factory configured - do not alter	JP6	pins 1 & 2 closed
í Battery type select internal	JP14	pins 2 & 3 closed
Battery type select external	JP14	pins 1 & 2 closed

DRAM CONFIGURATION				
Size	Bank 0	Bank 1	Bank 2	Bank 3
1MB	(4) 256K x 9	NONE	NONE	NONE
2MB	(4) 256K x 9	(4) 256K x 9	NONE	NONE
4MB	(4) 1M x 9	NONE	NONE	NONE
5MB	(4) 256K x 9	(4) 1M x 9	NONE	NONE
8MB	(4) 1M x 9	(4) 1M x 9	NONE	NONE
12MB	(4) 1M x 9	(4) 1M x 9	(4) 1M x 9	NONE
16MB	(4) 1M x 9	(4) 1M x 9	(4) 1M x 9	(4) 1M x 9

Note: Banks 2 & 3 may be filled with 1M x 9 SIMM modules only.

CACHE CONFIGURATION			
Size	Bank 0	Bank 1	TAG
32KB	(4) 16K x 4	NONE	(2) 16K x 4
64KB	(4) 16K x 4	(4) 16K x 4	(2) 16K x 4

CACHE CONFIGURATION				
Size	JP7	JP8	JP9	JP10
Internal cache disabled (external cache enabled)	Open	Open	Open	Open
Internal cache enabled (external cache disabled)	Closed	Closed	Closed	Closed