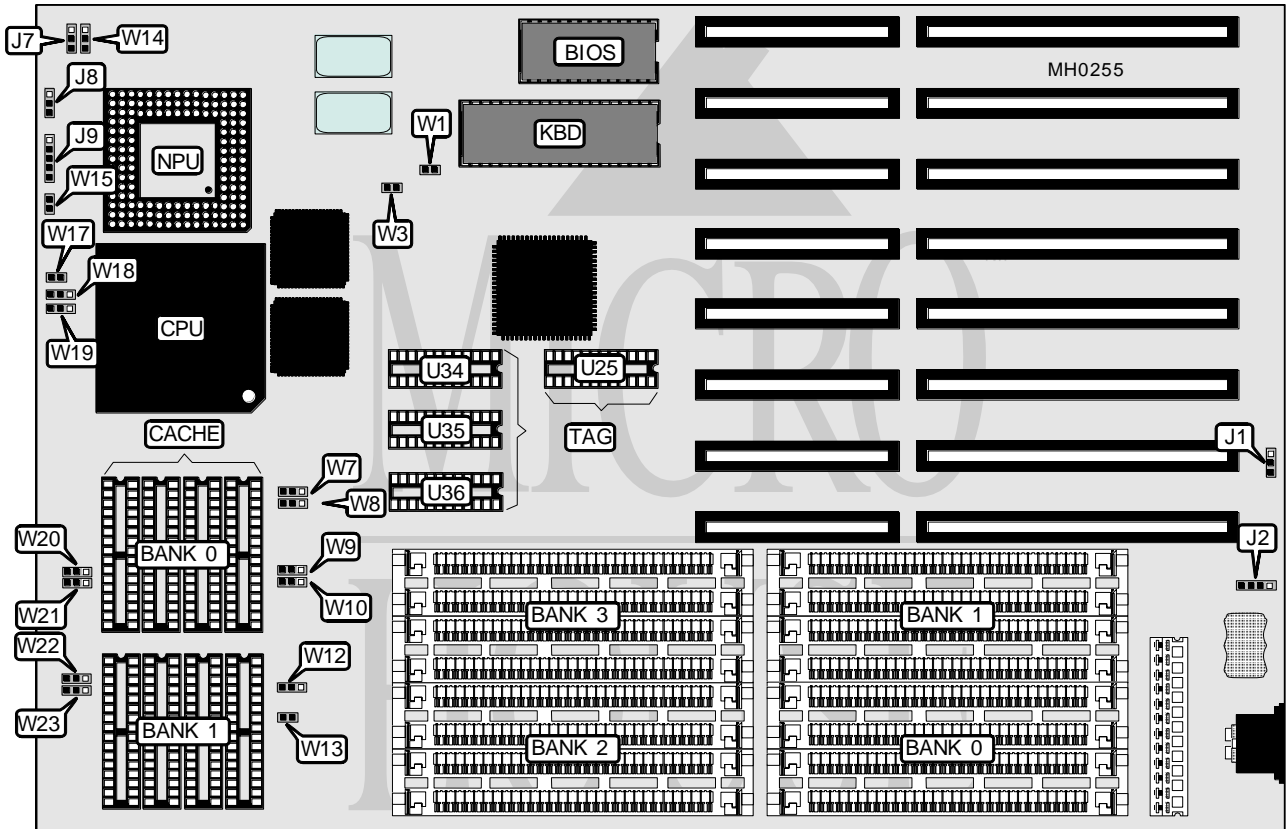


FOCUS INFORMATION SYSTEMS, INC.

486IU

Processor	80486SX/80487SX/80486DX
Processor Speed	25/33/40/50MHz
Chip Set	UMC
Max. Onboard DRAM	64MB
Cache	64/128/256/512/1024KB
BIOS	AMI/MR
Dimensions	330mm x 218mm
I/O Options	None
NPU Options	4167



CONNECTIONS			
Purpose	Location	Purpose	Location
External battery	J2	Power LED & keylock	J9
Turbo switch	J7	Turbo LED	W14
Speaker	J8	Reset switch	W15

Continued on next page . . .

FOCUS INFORMATION SYSTEMS, INC.

486IU

... continued from previous page

USER CONFIGURABLE SETTINGS		
Function	Jumper	Position
í CMOS memory normal operation	J1	pins 2 & 3 closed
CMOS memory clear	J1	pins 1 & 2 closed
í Monitor type select color	W1	Closed
Monitor type select monochrome	W1	Open

DRAM CONFIGURATION				
Size	Bank 0	Bank 1	Bank 2	Bank 3
1MB	(4) 256K x 9	NONE	NONE	NONE
2MB	(4) 256K x 9	(4) 256K x 9	NONE	NONE
3MB	(4) 256K x 9	(4) 256K x 9	(4) 256K x 9	NONE
4MB	(4) 256K x 9	(4) 256K x 9	(4) 256K x 9	(4) 256K x 9
4MB	(4) 1M x 9	NONE	NONE	NONE
5MB	(4) 256K x 9	(4) 1M x 9	NONE	NONE
6MB	(4) 256K x 9	(4) 256K x 9	(4) 1M x 9	NONE
8MB	(4) 1M x 9	(4) 1M x 9	NONE	NONE
9MB	(4) 256K x 9	(4) 1M x 9	(4) 1M x 9	NONE
10MB	(4) 256K x 9	(4) 256K x 9	(4) 1M x 9	(4) 1M x 9
12MB	(4) 1M x 9	(4) 1M x 9	(4) 1M x 9	NONE
16MB	(4) 1M x 9	(4) 1M x 9	(4) 1M x 9	(4) 1M x 9
16MB	(4) 4M x 9	NONE	NONE	NONE
20MB	(4) 1M x 9	(4) 4M x 9	NONE	NONE
24MB	(4) 1M x 9	(4) 1M x 9	(4) 4M x 9	NONE
32MB	(4) 4M x 9	(4) 4M x 9	NONE	NONE
36MB	(4) 1M x 9	(4) 4M x 9	(4) 4M x 9	NONE
40MB	(4) 1M x 9	(4) 1M x 9	(4) 4M x 9	(4) 4M x 9
48MB	(4) 4M x 9	(4) 4M x 9	(4) 4M x 9	NONE
64MB	(4) 4M x 9	(4) 4M x 9	(4) 4M x 9	(4) 4M x 9

CPU JUMPER CONFIGURATION				
CPU	W3	W17	W18	W19
80486SX	Open	Open	Open	pins 2 & 3 closed
80487SX	Open	Closed	pins 2 & 3 closed	pins 1 & 2 closed
80486DX	Open	Closed	pins 1 & 2 closed	pins 1 & 2 closed

Note: When a 20MHz 80486SX CPU is used, W3 is closed and a 40MHz clock is installed.

Continued on next page ...

FOCUS INFORMATION SYSTEMS, INC.

486IU

... continued from previous page

CACHE CONFIGURATION				
Size	Bank 0	Bank 1	TAG (U25, U34, U35)	TAG (U36)
64KB	(4) 8K x 8	(4) 8K x 8	(3) 16K x 4	NONE
128KB	(4) 32K x 8	NONE	(3) 16K x 4	NONE
256KB	(4) 32K x 8	(4) 32K x 8	(3) 16K x 4	NONE
512KB	(4) 128K x 8	NONE	(3) 64K x 4	(1) 64K x 4
1024KB	(4) 128K x 8	(4) 128K x 8	(3) 64K x 4	(1) 64K x 4

CACHE JUMPER CONFIGURATION										
Size	W7	W8	W9	W10	W12	W13	W20	W21	W22	W23
64KB	1 & 2	1 & 2	1 & 2	1 & 2	1 & 2	Closed	1 & 2	2 & 3	Open	Open
128KB	1 & 2	1 & 2	2 & 3	1 & 2	1 & 2	Closed	2 & 3	1 & 2	Open	Open
256KB	1 & 2	2 & 3	2 & 3	1 & 2	1 & 2	Closed	1 & 2	2 & 3	Open	Open
512KB	2 & 3	2 & 3	2 & 3	2 & 3	1 & 2	Open	Open	1 & 2	2 & 3	1 & 2
1024KB	2 & 3	2 & 3	2 & 3	2 & 3	2 & 3	Open	Open	1 & 2	1 & 2	2 & 3

Note: Pins designated should be in the closed position.