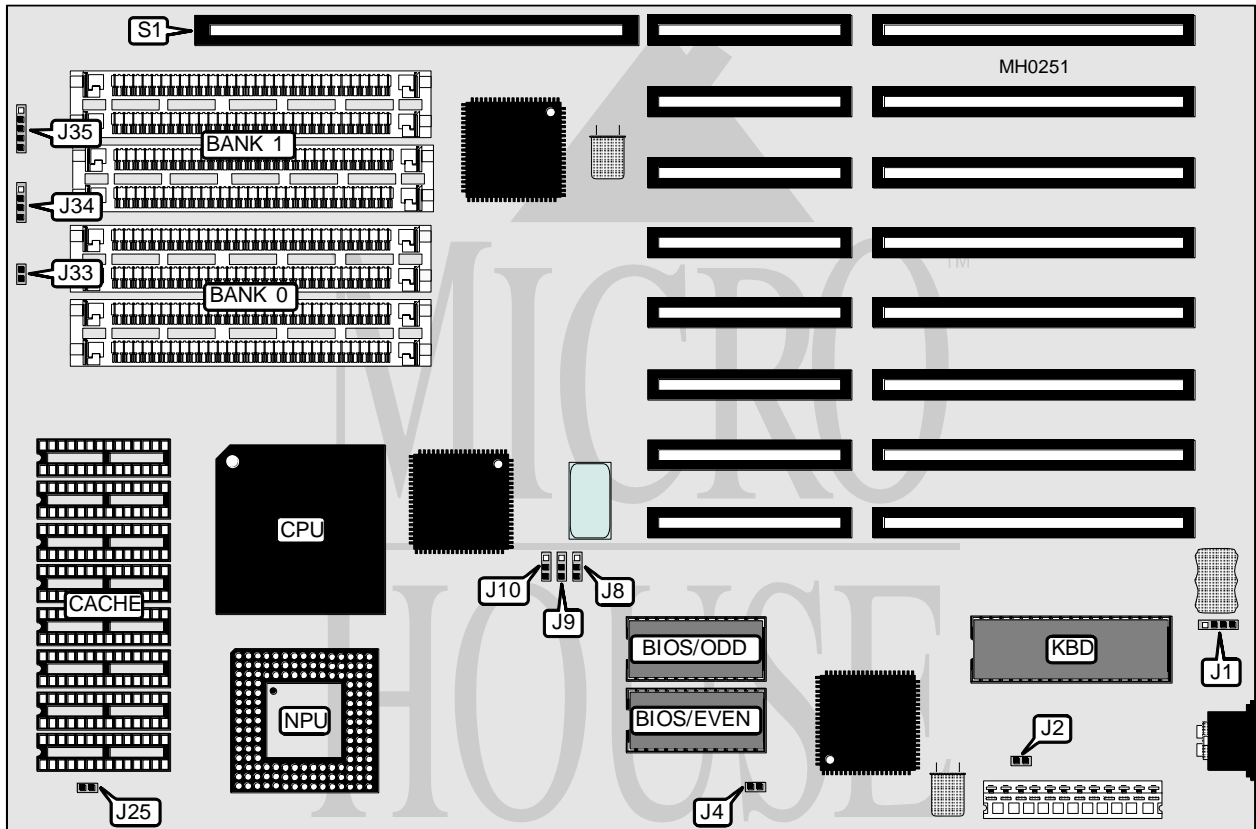


EVERSOURCE COMPUTERS, INC.

ETE Q 80486

Processor	80486DX
Processor Speed	25/33MHz
Chip Set	ETE Q
Max. Onboard DRAM	32MB
Cache	64/256KB
BIOS	MR
Dimensions	330mm x 218mm
I/O Options	32-bit external memory card slot
NPU Options	4167



CONNECTIONS			
Purpose	Location	Purpose	Location
External battery	J1	Power LED & keylock	J35
Reset switch	J33	External memory card slot	S1
Speaker	J34		

Continued on next page . . .

EVERSOURCE COMPUTERS, INC.
ETE Q 80486

... continued from previous page

USER CONFIGURABLE SETTINGS		
Function	Jumper	Position
í Monitor type select color	J2	Closed
Monitor type select monochrome	J2	Open

DRAM CONFIGURATION		
Size	Bank 0	Bank 1
1MB	(4) 256K x 9	NONE
2MB	(4) 256K x 9	(4) 256K x 9
4MB	(4) 1M x 9	NONE
5MB	(4) 256K x 9	(4) 1M x 9
8MB	(4) 1M x 9	(4) 1M x 9
16MB	(4) 4M x 9	NONE
17MB	(4) 256K x 9	(4) 4M x 9
20MB	(4) 1M x 9	(4) 4M x 9
32MB	(4) 4M x 9	(4) 4M x 9

CACHE CONFIGURATION	
Size	Bank 0
64KB	(8) 8K x 8
256KB	(8) 32K x 8

CACHE JUMPER CONFIGURATION					
Size	J4	J8	J9	J10	J25
64KB	Open	2 & 3	2 & 3	2 & 3	Open
256KB	Closed	1 & 2	1 & 2	1 & 2	Closed

Note: Pins designated should be in the closed position.