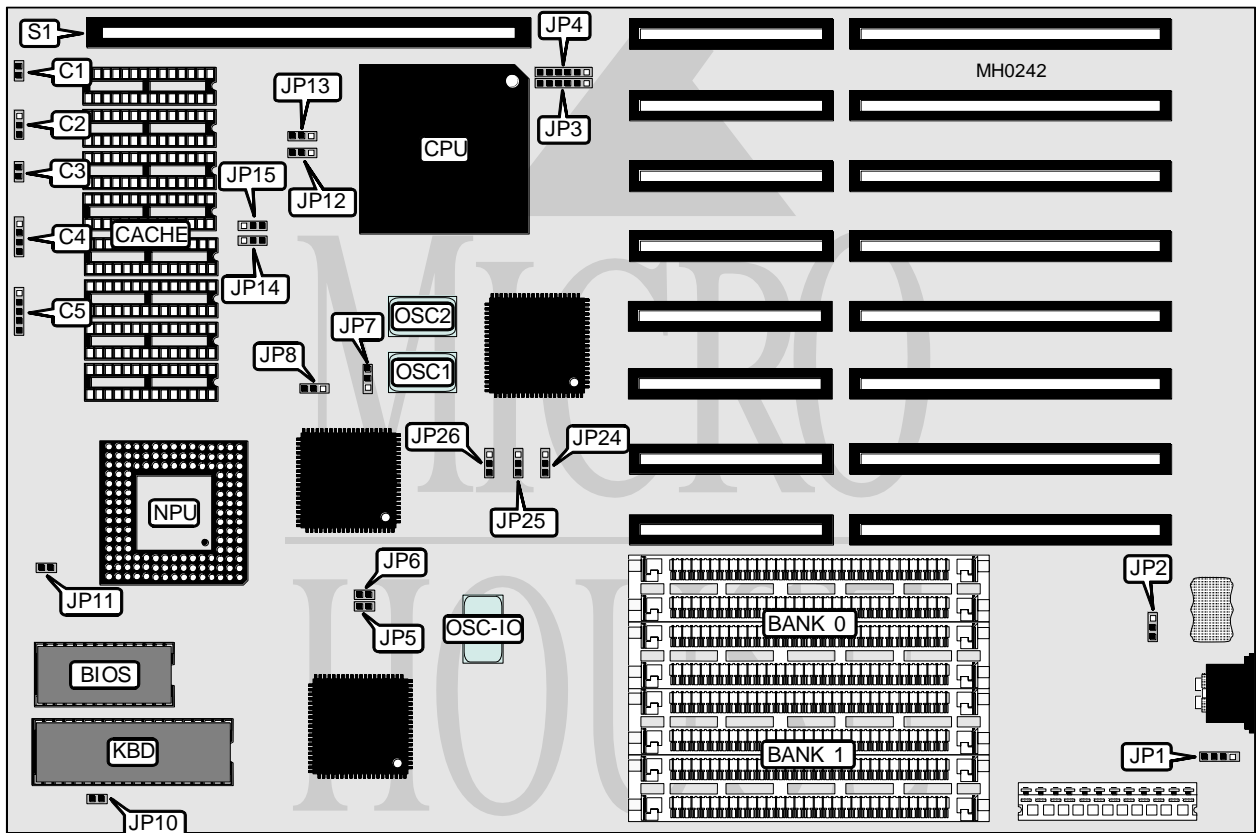


# AXIK COMPUTER, INC.

## ACE CACHE 486/WB

<b>Processor</b>	80486SX/80487SX/80486DX
<b>Processor Speed</b>	20/25/33/50MHz
<b>Chip Set</b>	SIS
<b>Max. Onboard DRAM</b>	32MB
<b>Cache</b>	64/256KB
<b>BIOS</b>	AMI/MR
<b>Dimensions</b>	330mm x 218mm
<b>I/O OPTIONS</b>	32-bit external video card
<b>NPU Options</b>	4167



CONNECTIONS			
Purpose	Location	Purpose	Location
Reset switch	C1	Keylock	C5
Turbo switch	C2	External battery	JP1
Turbo LED	C3	32-bit external video card	S1
Speaker	C4		

Continued on next page . . .

**AXIK COMPUTER, INC.**  
**ACE CACHE 486/WB**

... continued from previous page

USER CONFIGURABLE SETTINGS		
Function	Jumper	Position
í CMOS memory normal operation	JP2	pins 1 & 2 closed
CMOS memory clear	JP2	pins 2 & 3 closed
CMOS memory disabled	JP2	Open
í Factory configured - do not alter	JP7	pins 1 & 2 closed
í Factory configured - do not alter	JP8	pins 1 & 2 closed
í Monitor type select color	JP10	Closed
Monitor type select monochrome	JP10	Open
í NPU mode select synchronous with CPU	JP11	Closed
NPU mode select asynchronous with CPU	JP11	Open
í Bus speed select CPU OSC	JP24	pins 1 & 2 closed
Bus speed select OSC-IO	JP24	pins 2 & 3 closed

DRAM CONFIGURATION		
Size	Bank 0	Bank 1
1MB	(4) 256K x 9	NONE
2MB	(4) 256K x 9	(4) 256K x 9
4MB	(4) 1M x 9	NONE
5MB	(4) 1M x 9	(4) 256K x 9
5MB	(4) 256K x 9	(4) 1M x 9
8MB	(4) 1M x 9	(4) 1M x 9
16MB	(4) 4M x 9	NONE
17MB	(4) 4M x 9	(4) 256K x 9
17MB	(4) 256K x 9	(4) 4M x 9
20MB	(4) 4M x 9	(4) 1M x 9
20MB	(4) 1M x 9	(4) 4M x 9
32MB	(4) 4M x 9	(4) 4M x 9

CACHE CONFIGURATION	
Size	Bank 0
64KB	(8) 64K x 9
256KB	(8) 256K x 9

CACHE JUMPER CONFIGURATION				
Size	JP12	JP13	JP14	JP15
64KB	pins 2 & 3 closed	pins 2 & 3 closed	pins 2 & 3 closed	pins 2 & 3 closed
256KB	pins 1 & 2 closed	pins 1 & 2 closed	pins 1 & 2 closed	pins 1 & 2 closed

CPU TYPE CONFIGURATION		
Type	JP3	JP4
80486SX	pins 1 & 2; 5 & 6 closed	pins 2 & 3 closed; 5 & 6 open
80487SX	pins 2 & 3; 4 & 5 closed	pins 2 & 3; 4 & 5 closed
80486DX	pins 2 & 3; 5 & 6 closed	pins 2 & 3; 5 & 6 closed

Continued on next page ...

---

**AXIK COMPUTER, INC.**  
**ACE CACHE 486/WB***... continued from previous page*

CPU BUS SPEED JUMPER CONFIGURATION		
CPU OSC	JP25	JP26
/3	Closed	Closed
/4	Open	Open
/5	Open	Closed
/6	Closed	Open

EXTERNAL VIDEO CARD CONFIGURATION		
Setting	JP5	JP6
Enabled	Closed	Closed
Disabled	Open	Open