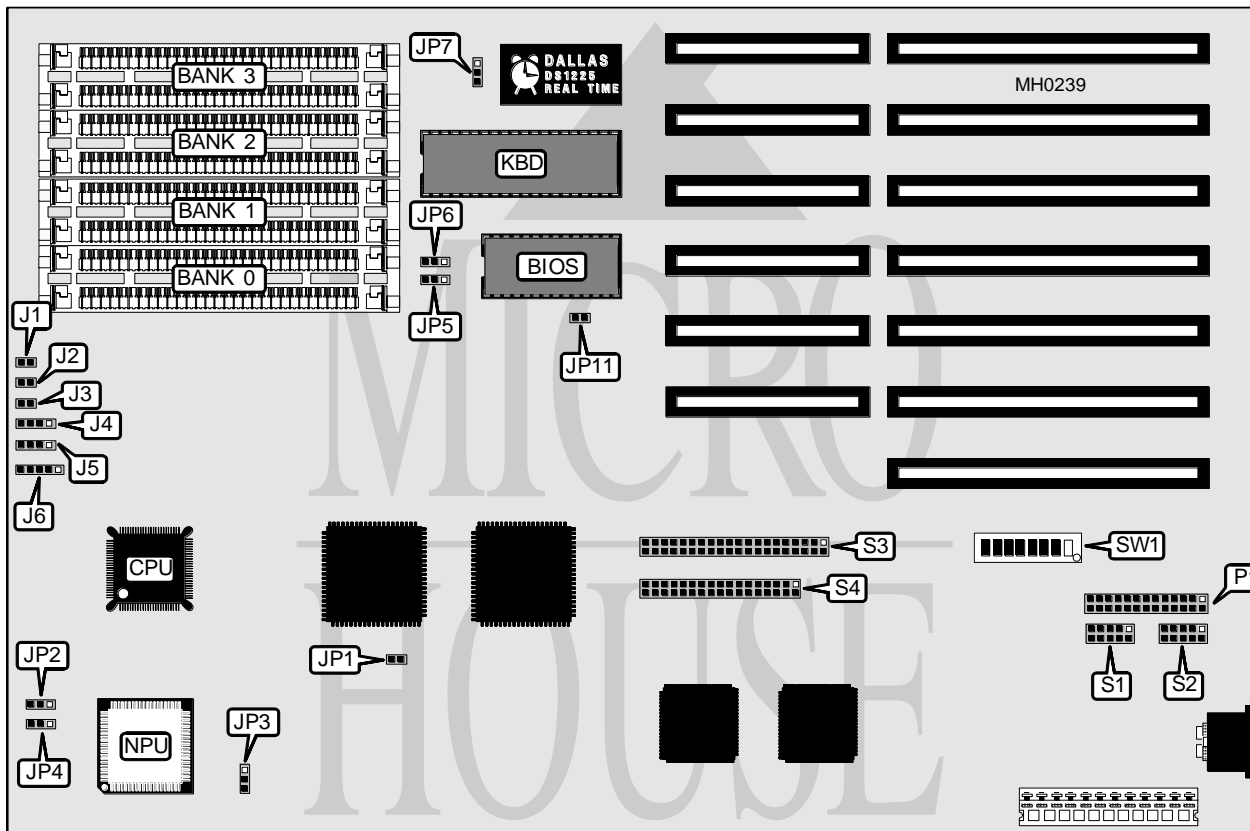


GCH SYSTEMS, INC.

EASY DATA 386SX

Processor	80386SX
Processor Speed	16MHz
Chip Set	Suntac
Max. Onboard DRAM	8MB
Cache	None
BIOS	AMI/Award/Phoenix
Dimensions	330mm x 218mm
I/O Options	Parallel port, serial port (2), floppy interface, IDE interface
NPU Options	80387SX



CONNECTIONS			
Purpose	Location	Purpose	Location
Reset switch	J1	Parallel port (LPT2)	P1
Turbo LED	J2	Serial port (COM1)	S1
Turbo switch	J3	Serial port (COM2)	S2
Hard drive LED	J4	IDE interface	S3
Speaker	J5	Floppy interface	S4
Power LED & keylock	J6		

Continued on next page . . .

GCH SYSTEMS, INC.

EASY DATA 386SX

... continued from previous page

USER CONFIGURABLE SETTINGS		
Function	Jumper/Switch	Position
í Factory configured - do not alter	JP1	Open
í Factory configured - do not alter	JP3	N/A
í BIOS type select Award	JP7	pins 2 & 3 closed
BIOS type select Phoenix	JP7	pins 1 & 2 closed
í Factory configured - do not alter	JP11	Closed
í Monitor type select color	SW1/1	On
Monitor type select monochrome	SW1/1	Off
í Floppy drive enabled	SW1/2	On
Floppy drive disabled	SW1/2	Off
í Floppy drive address select primary	SW1/3	Off
Floppy drive address select secondary	SW1/3	On
í COM1 (S1) enabled	SW1/6	On
COM1 (S1) disabled	SW1/6	Off
í COM2 (S2) enabled	SW1/7	On
COM2 (S2) disabled	SW1/7	Off
í LPT2 (P1) enabled	SW1/8	On
LPT2 (P1) disabled	SW1/8	Off

DRAM CONFIGURATION				
Size	Bank 0	Bank 1	Bank 2	Bank 3
512KB	(2) 256K x 9	NONE	NONE	NONE
1MB	(2) 256K x 9	(2) 256K x 9	NONE	NONE
2MB	(2) 256K x 9	(2) 256K x 9	(2) 256K x 9	(2) 256K x 9
2MB	(2) 1M x 9	NONE	NONE	NONE
3MB	(2) 256K x 9	(2) 256K x 9	(2) 1M x 9	NONE
4MB	(2) 1M x 9	(2) 1M x 9	NONE	NONE
5MB	(2) 256K x 9	(2) 256K x 9	(2) 1M x 9	(2) 1M x 9
8MB	(2) 1M x 9	(2) 1M x 9	(2) 1M x 9	(2) 1M x 9

NPU MODE CONFIGURATION		
Size	JP2	JP4
Synchronous with CPU	pins 2 & 3 closed	pins 2 & 3 closed
Asynchronous with CPU	pins 1 & 2 closed	pins 1 & 2 closed

ON BOARD IDE CONFIGURATION		
Size	SW1/4	SW1/5
Enabled	Off	On
Disabled	On	Off

BIOS CONFIGURATION		
Size	JP5	JP6
27256	pins 1 & 2 closed	pins 1 & 2 closed
27512	pins 2 & 3 closed	pins 2 & 3 closed