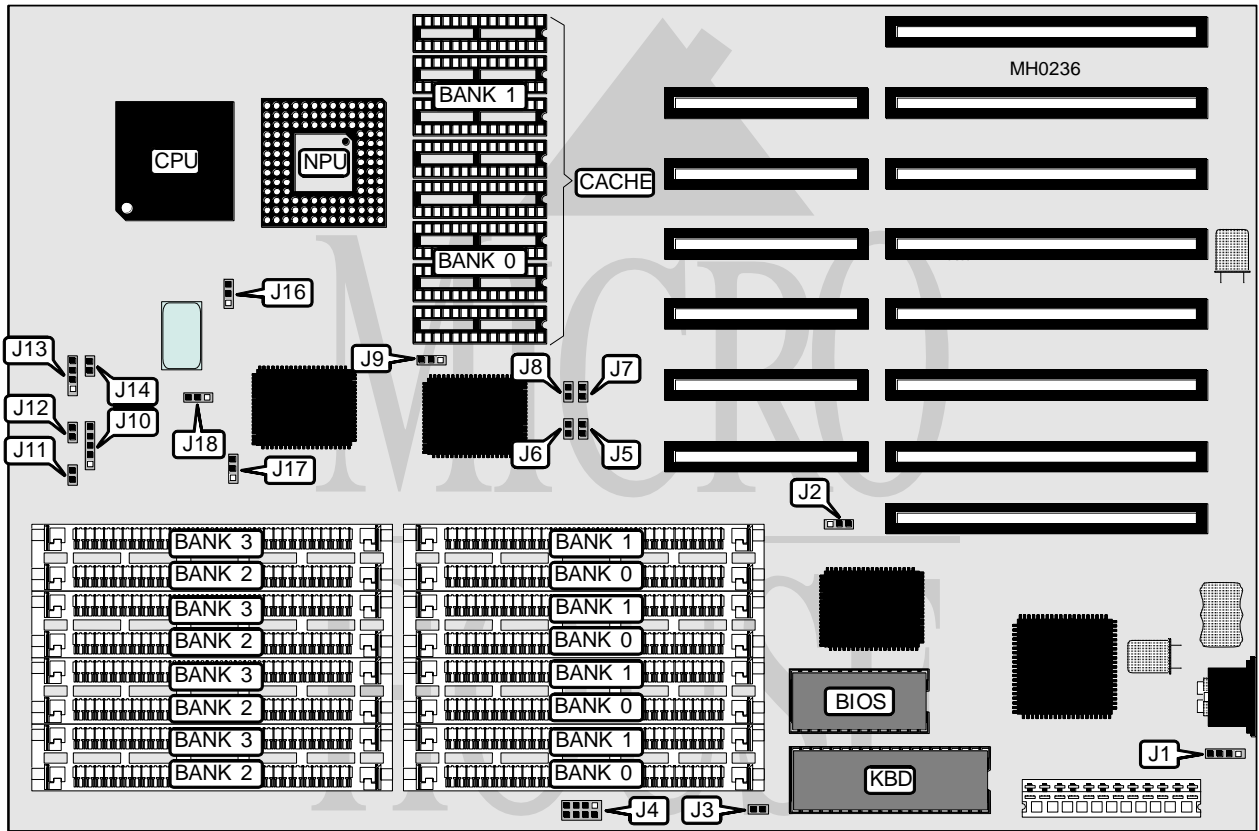


# MICROWISE, INC.

## M B - 3 8 6 B 3 3 C

**Processor** 80386DX  
**Processor Speed** 33MHz  
**Chip Set** SIS  
**Max. Onboard DRAM** 16MB  
**Cache** 32/64KB  
**BIOS** AMI  
**Dimensions** 330mm x 218mm  
**I/O Options** None  
**NPU Options** 80387DX/3167



CONNECTIONS			
Purpose	Location	Purpose	Location
External battery	J1	Turbo switch	J12
Power LED & keylock	J10	Speaker	J13
Turbo LED	J11	Reset switch	J14

Continued on next page . . .

**MICROWISE, INC.**  
**MB - 386B33C**

... continued from previous page

USER CONFIGURABLE SETTINGS		
Function	Jumper	Position
í Factory configured - do not alter	J2	N/A
í Monitor type select monochrome	J3	Open
Monitor type select color	J3	Closed
í Factory configured - do not alter	J4	N/A
í Factory configured - do not alter	J16	N/A
í Factory configured - do not alter	J17	N/A
í Factory configured - do not alter	J18	N/A

DRAM CONFIGURATION				
Size	Bank 0	Bank 1	Bank 2	Bank 3
1MB	(4) 256K x 9	NONE	NONE	NONE
2MB	(4) 256K x 9	(4) 256K x 9	NONE	NONE
4MB	(4) 1M x 9	NONE	NONE	NONE
5MB	(4) 256K x 9	(4) 1M x 9	NONE	NONE
8MB	(4) 1M x 9	(4) 1M x 9	NONE	NONE
12MB	(4) 1M x 9	(4) 1M x 9	(4) 1M x 9	NONE
16MB	(4) 1M x 9	(4) 1M x 9	(4) 1M x 9	(4) 1M x 9

CACHE CONFIGURATION		
Size	Bank 0	Bank 1
32KB	(4) 8K x 8	NONE
64KB	(4) 8K x 8	(4) 8K x 8

CACHE JUMPER CONFIGURATION	
Size	J9
32KB	pins 1 & 2 closed
64KB	pins 2 & 3 closed

CACHE JUMPER CONFIGURATION				
Size	J5	J6	J7	J8
Enabled	Open	Open	Open	Open
Disabled	Closed	Closed	Closed	Closed