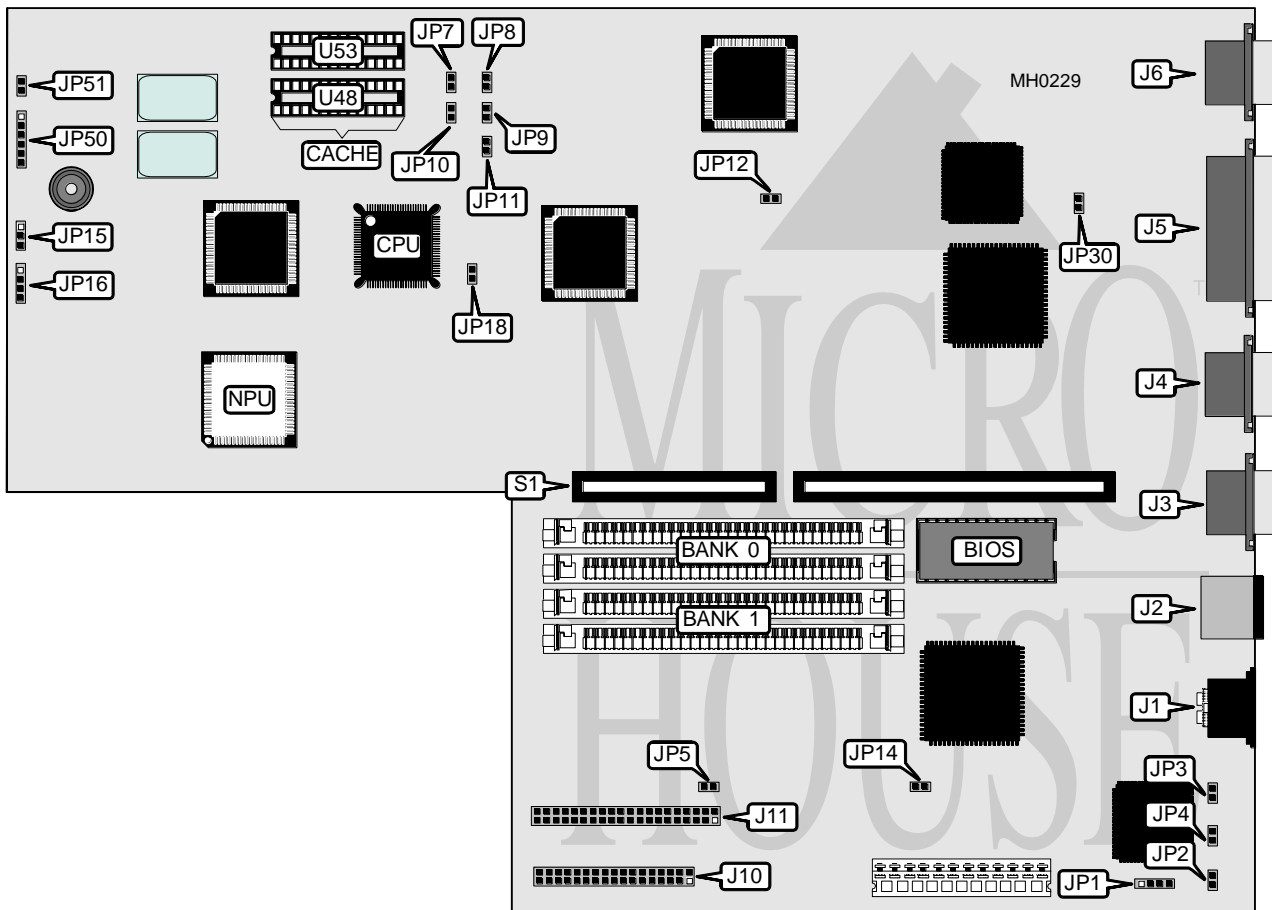


# PACKARD BELL PB55 SERIES/F820 SERIES SX (LEGEND 520SX)

<b>Processor</b>	80386SX
<b>Processor Speed</b>	20MHz
<b>Chip Set</b>	TI
<b>Max. Onboard DRAM</b>	16MB
<b>Cache</b>	16/32KB
<b>BIOS</b>	Phoenix
<b>Dimensions</b>	330mm x 218mm
<b>I/O Options</b>	Parallel port, serial ports (2), PS/2 mouse port, VGA interface, floppy drive interface, IDE interface
<b>NPU Options</b>	80387SX



Continued on next page . . .

# PACKARD BELL

## PB55 SERIES/F820 SERIES SX

### (LEGEND 520SX)

... continued from previous page

CONNECTIONS			
Purpose	Location	Purpose	Location
Keyboard	J1	Speaker	JP16
PS/2 mouse port	J2	Reset switch	JP50 pin 1
Serial port 2	J3	Turbo switch	JP50 pin 2
Serial port 1	J4	Power ready	JP50 pin 3
Parallel port	J5	IDE LED	JP50 pin 4
VGA interface	J6	Turbo LED	JP50 pin 5
Floppy interface	J10	Ground	JP50 pin 6
IDE interface	J11	Keylock	JP51
External battery	JP1	Riser card	S1

USER CONFIGURABLE SETTINGS		
Function	Jumper	Position
í Factory configured - do not alter	JP2	N/A
í Monitor type select color	JP3	Closed
Monitor type select monochrome	JP3	Open
í Factory configured - do not alter	JP4	N/A
í PS/2 mouse enabled	JP5	Closed
PS/2 mouse disabled	JP5	Open
í 800 x 600 display frequency select 60Hz V/37.8KHz H	JP7	Closed
800 x 600 display frequency select 56Hz V/35.2KHz H	JP7	Open
í Monitor timing select multi-sync one	JP8	Closed
Monitor timing select PS/2 and others	JP8	Open
í Video BIOS select PS/2 VGA mode	JP9	Closed
Video BIOS select AT VGA mode	JP9	Open
í Factory configured - do not alter	JP10	N/A
í Factory configured - do not alter	JP11	N/A
í VGA interface enabled	JP12	Closed
VGA interface disabled	JP12	Open
í CMOS memory normal operation	JP14	Open
CMOS memory clear	JP14	Closed
í Speaker select internal	JP15	pins 1 & 2 closed
Speaker select external	JP15	pins 2 & 3 closed
í Factory configured - do not alter	JP18	N/A
í Printer port type select Centronics	JP30	Closed
Printer port type select PS/2 (bi-directional)	JP30	Open

Continued on next page . . .

# PACKARD BELL

## PB55 SERIES/F820 SERIES SX

### (LEGEND 520SX)

... continued from previous page

DRAM CONFIGURATION		
Size	Bank 0	Bank 1
1MB	(2) 256K x 9	(2) 256K x 9
2MB	(2) 1M x 9	NONE
2.5MB	(2) 256K x 9	(2) 1M x 9
4MB	(2) 1M x 9	(2) 1M x 9
8MB	(2) 4M x 9	NONE
8.5MB	(2) 256K x 9	(2) 4M x 9
10MB	(2) 1M x 9	(2) 4M x 9
16MB	(2) 4M x 9	(2) 4M x 9

CACHE CONFIGURATION		
Size	Bank 0	Bank 1
16KB	(2) 8K x 8	NONE
32KB	(2) 8K x 8	(2) 8K x 8
Note: Bank 0 is factory installed and is not configurable.		