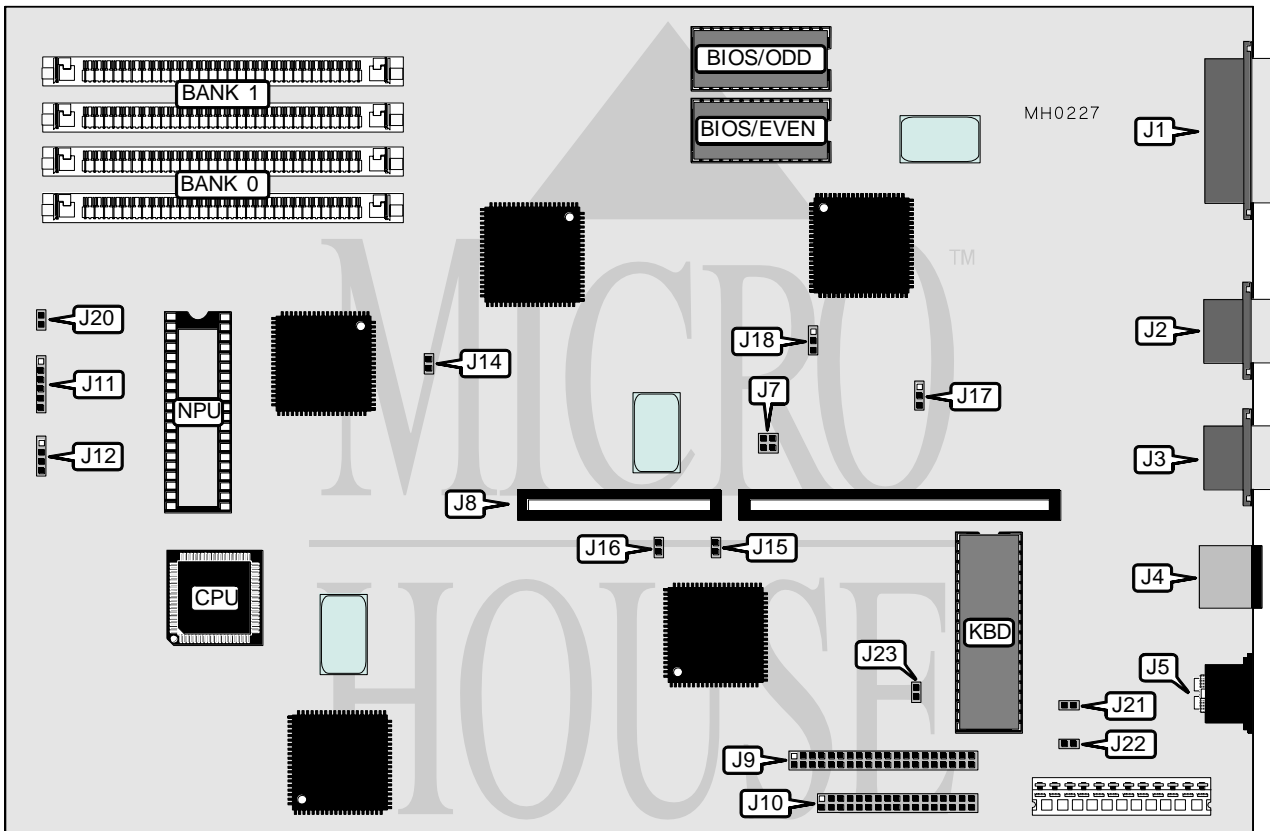


# PACKARD BELL

## 286X PWB-2149 REL.01 (FORCE 1/AXCEL 1+/ PB286N/LEGEND IV/PACK-MATE III)

Processor	80286
Processor Speed	12/16MHz
Chip Set	TI
Max. Onboard DRAM	4MB
Cache	None
BIOS	Phoenix
Dimensions	330mm x 218mm
I/O Options	Parallel port, serial ports (2), PS/2 mouse port, floppy drive interface, IDE interface
NPU Options	80287



Continued on next page . . .

## PACKARD BELL

286X PWB-2149 REL.01 (FORCE 1/AXCEL 1+/  
PB286N/LEGEND IV/PACK-MATE III)

... continued from previous page

CONNECTIONS			
Purpose	Location	Purpose	Location
Parallel port	J1	Reset switch	J11 pin 1
Serial port (COM2)	J2	Turbo switch	J11 pin 2
Serial port (COM1)	J3	Power ready	J11 pin 3
PS/2 mouse port	J4	IDE LED	J11 pin 4
Keyboard	J5	Turbo LED	J11 pin 5
Expansion slot card	J8	Ground	J11 pin 6
IDE interface	J9	External battery	J12
Floppy interface	J10	Keylock	J20

USER CONFIGURABLE SETTINGS		
Function	Jumper	Position
í COM1 (J3) enabled	J7	pins 1 & 2 closed
COM1 (J3) disabled	J7	pins 1 & 2 open
í COM2 (J2) enabled	J7	pins 3 & 4 closed
COM2 (J2) disabled	J7	pins 3 & 4 open
í DRAM select 0 wait states	J14	Closed
DRAM select 1 wait state	J14	Open
í DRAM module type select 256K x 9	J15	Closed
DRAM module type select 1M x 9	J15	Open
í 384KB relocation enabled	J16	Open
384KB relocation disabled	J16	Closed
í Floppy interface enabled	J21	Closed
Floppy interface disabled	J21	Open
í Monitor type select color	J22	Closed
Monitor type select monochrome	J22	Open
í IDE interface enabled	J23	Closed
IDE interface disabled	J23	Open

DRAM CONFIGURATION		
Size	Bank 0	Bank 1
1MB	(2) 256K x 9	(2) 256K x 9
2MB	(2) 1M x 9	NONE
4MB	(2) 1M x 9	(2) 1M x 9

PARALLEL PORT IRQ CONFIGURATION		
IRQ	J17	J18
LPT1 at IRQ7	pins 1 & 2 closed	pins 2 & 3 closed
LPT2 at IRQ5	pins 2 & 3 closed	pins 1 & 2 closed