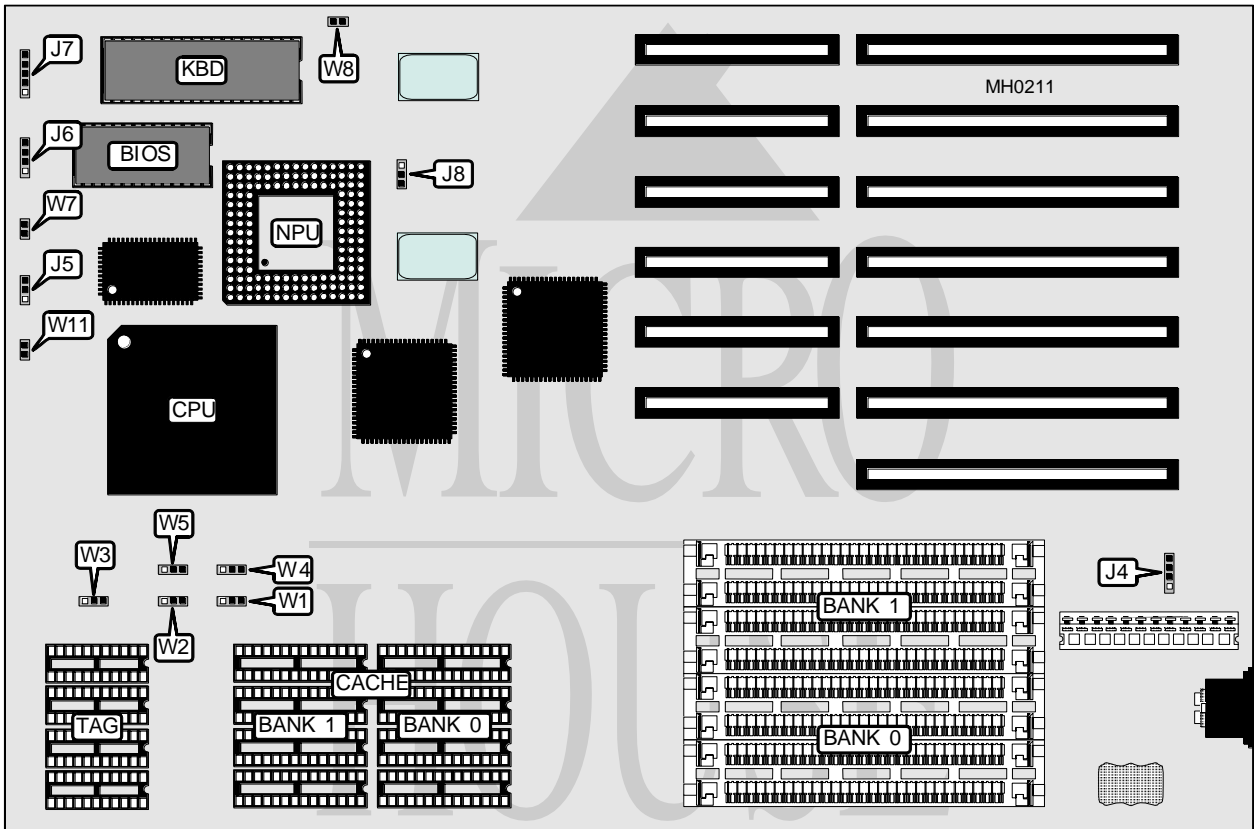


PROSYS IDEAL 486

Processor	80486DX
Processor Speed	25/33/40/50MHz
Chip Set	UMC
Max. Onboard DRAM	32MB
Cache	64/128/256KB
BIOS	AMI
Dimensions	330mm x 218mm
I/O Options	None
NPU Options	4167



CONNECTIONS			
Purpose	Location	Purpose	Location
External battery	J4	Reset switch	W7
Speaker	J6	Turbo LED	W11
Power LED & keylock	J7		

Continued on next page . . .

PROSYS

IDEAL 486

... continued from previous page

USER CONFIGURABLE SETTINGS		
Function	Jumper	Position
í CPU speed select fast	J5	pins 1 & 2 closed
CPU speed select slow	J5	Open
í Disk write select 1 wait state	J8	pins 2 & 3 closed
Disk write select 0 wait states	J8	pins 1 & 2 closed
í Monitor type select color	W8	Open
Monitor type select monochrome	W8	Closed

DRAM CONFIGURATION		
Size	Bank 0	Bank 1
1MB	(4) 256K x 9	NONE
2MB	(4) 256K x 9	(4) 256K x 9
4MB	(4) 1M x 9	NONE
5MB	(4) 256K x 9	(4) 1M x 9
8MB	(4) 1M x 9	(4) 1M x 9
16MB	(4) 4M x 9	NONE
20MB	(4) 1M x 9	(4) 4M x 9
32MB	(4) 4M x 9	(4) 4M x 9

CACHE CONFIGURATION			
Size	Bank 0	Bank 1	TAG
64KB	(4) 8K x 8	(4) 8K x 8	(4) 16K x 4
128KB	(4) 32K x 8	NONE	(4) 16K x 4
256KB	(4) 32K x 8	(4) 32K x 8	(4) 16K x 4

CACHE JUMPER CONFIGURATION					
Size	W1	W2	W3	W4	W5
64KB	1 & 2	1 & 2	1 & 2	1 & 2	2 & 3
128KB	1 & 2	1 & 2	2 & 3	2 & 3	2 & 3
256KB	2 & 3	2 & 3	2 & 3	2 & 3	1 & 2

Note: Pins designated should be in the closed position.