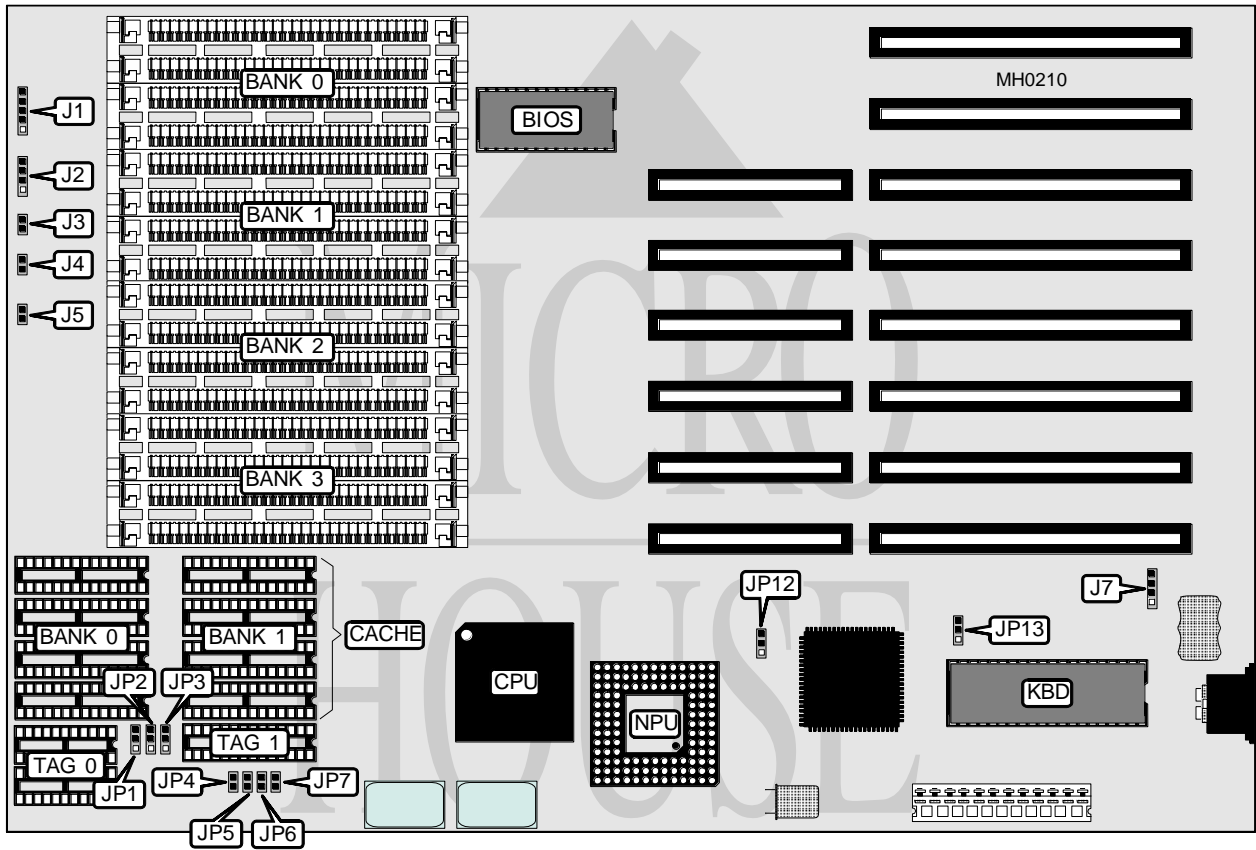


UNIDENTIFIED

BABY CACHE 386

Processor 80386DX
Processor Speed 33MHz
Chip Set SIS
Max. Onboard DRAM 16MB
Cache 32/64/128KB
BIOS AMI
Dimensions 330mm x 218mm
I/O Options None
NPU Options 80387/3167



CONNECTIONS			
Purpose	Location	Purpose	Location
Power LED & keylock	J1	Turbo switch	J4
Speaker	J2	Reset switch	J5
Turbo LED	J3	External battery	J7

Continued on next page . . .

UNIDENTIFIED

BABY CACHE 386

... continued from previous page

USER CONFIGURABLE SETTINGS		
Function	Jumper	Position
í NPU mode select synchronous with CPU	JP12	pins 1 & 2 closed
NPU mode select asynchronous with CPU	JP12	pins 2 & 3 closed
í Monitor type select color	JP13	pins 2 & 3 closed
Monitor type select monochrome	JP13	pins 1 & 2 closed

DRAM CONFIGURATION				
Size	Bank 0	Bank 1	Bank 2	Bank 3
1MB	(4) 256K x 9	NONE	NONE	NONE
2MB	(4) 256K x 9	(4) 256K x 9	NONE	NONE
4MB	(4) 1M x 9	NONE	NONE	NONE
8MB	(4) 1M x 9	(4) 1M x 9	NONE	NONE
12MB	(4) 1M x 9	(4) 1M x 9	(4) 1M x 9	NONE
16MB	(4) 1M x 9	(4) 1M x 9	(4) 1M x 9	(4) 1M x 9

CACHE CONFIGURATION				
Size	Bank 0	Bank 1	Tag 0	Tag 1
32KB	(4) 8K x 8	NONE	NONE	(1) 8K x 8
32KB	(4) 8K x 8	NONE	(2) 16K x 4	NONE
64KB	(4) 8K x 8	(4) 8K x 8	(2) 16K x 4	NONE
128KB	NONE	(4) 32K x 8	NONE	(1) 32K x 8

CACHE JUMPER CONFIGURATION			
Size	JP1	JP2	JP3
32KB	pins 2 & 3 closed	pins 1 & 2 closed	pins 1 & 2 closed
64KB	pins 1 & 2 closed	pins 1 & 2 closed	pins 1 & 2 closed
128KB	pins 1 & 2 closed	pins 2 & 3 closed	pins 2 & 3 closed

CACHE JUMPER CONFIGURATION (128KB INTERNAL ONLY)				
Setting	JP4	JP5	JP6	JP7
Enabled	Closed	Closed	Closed	Closed
Disabled	Open	Open	Open	Open

Note: Enabling internal cache will disable external cache.