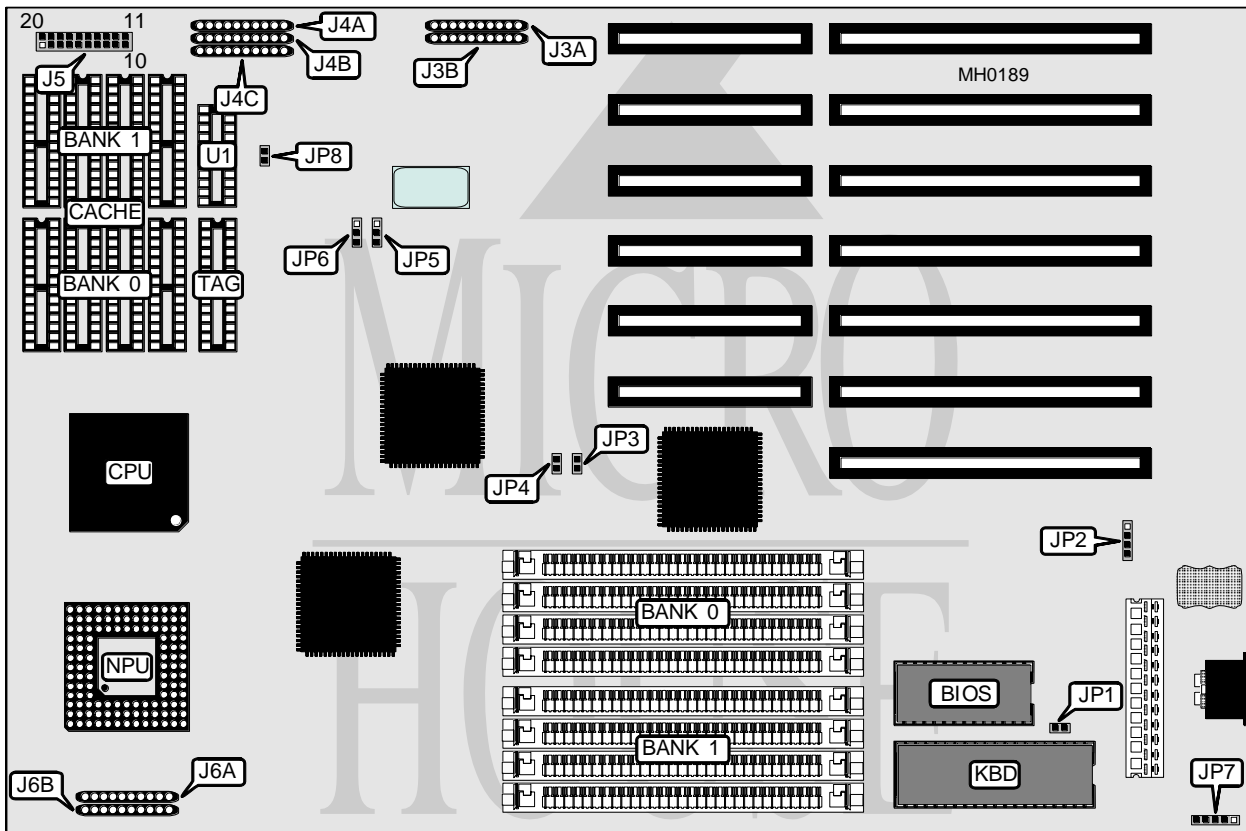


COMPUTREND SYSTEMS, INC.

CONTAQ - 386

Processor	80386DX/80486DX (on MS-4901 daughter board)
Processor Speed	25/33/50MHz
Chip Set	CONTAQ
Max. Onboard DRAM	32MB
Cache	64/128/256KB
BIOS	AMI
Dimensions	330mm x 218mm
I/O Options	Auxiliary keyboard connector
NPU Options	80387/3167



CONNECTIONS			
Purpose	Location	Purpose	Location
Power LED & keylock	J5 pins 1 - 5	Reset switch	J5 19 & 20
Speaker	J5 pins 7 - 10	External battery	JP2
Turbo LED	J5 pins 12 & 13	Auxiliary keyboard	JP7
Turbo switch	J5 pins 15 - 17		

Continued on next page . . .

COMPUTREND SYSTEMS, INC.
CONTAQ-386

... continued from previous page

USER CONFIGURABLE SETTINGS		
Function	Jumper	Position
í Monitor type select color	JP1	Closed
Monitor type select monochrome	JP1	Open
í Battery type select internal	JP2	pins 2 & 3 closed
Battery type select external	JP2	Closed

DRAM CONFIGURATION		
Size	Bank 0	Bank 1
1MB	(4) 256K x 9	NONE
2MB	(4) 256K x 9	(4) 256K x 9
4MB	(4) 1M x 9	NONE
5MB	(4) 1M x 9	(4) 256K x 9
8MB	(4) 1M x 9	(4) 1M x 9
16MB	(4) 4M x 9	NONE
17MB	(4) 4M x 9	(4) 256K x 9
20MB	(4) 4M x 9	(4) 1M x 9
32MB	(4) 4M x 9	(4) 4M x 9

CACHE CONFIGURATION				
Size	Bank 0	Bank 1	TAG	TAG (U1)
64KB	(4) 8K x 8	(4) 8K x 8	(1) 8K x 8	(1) 16K x 4
128KB	(4) 32K x 8	NONE	(1) 8K x 8	(1) 16K x 4
256KB	(4) 32K x 8	(4) 32K x 8	(1) 32K x 8	(1) 16K x 4

CACHE JUMPER CONFIGURATION			
Size	J4A	J4B	J4C
64KB	Closed	Open	Open
128KB	Open	Closed	Open
256KB	Open	Open	Closed

CPU TYPE CONFIGURATION						
Type	J3A	J3B	JP5	J6A	J6B	JP8
80386DX	Closed	Open	pins 2 & 3 closed	Closed	Open	Open
80486DX	Open	Closed	pins 1 & 2 closed	Open	Closed	Closed

CPU BUS CLOCK CONFIGURATION				
Type	Bus Clock	JP3	JP4	JP6
80386DX	CLK2/4	Closed	Closed	pins 1 & 2 closed
80386DX	CLK2/6	Open	Closed	pins 1 & 2 closed
80386DX	CLK2/8	Closed	Open	pins 1 & 2 closed
80386DX	CLK2/10	Open	Open	pins 1 & 2 closed
80386DX	7.2MHz	N/A	N/A	pins 2 & 3 closed
80486DX	Reserved	Open	Open	pins 1 & 2 closed
80486DX	CLK/3	Open	Closed	pins 1 & 2 closed
80486DX	CLK/4	Closed	Open	pins 1 & 2 closed
80486DX	CLK/6	Closed	Closed	pins 1 & 2 closed
80486DX	7.2MHz	N/A	N/A	pins 2 & 3 closed

