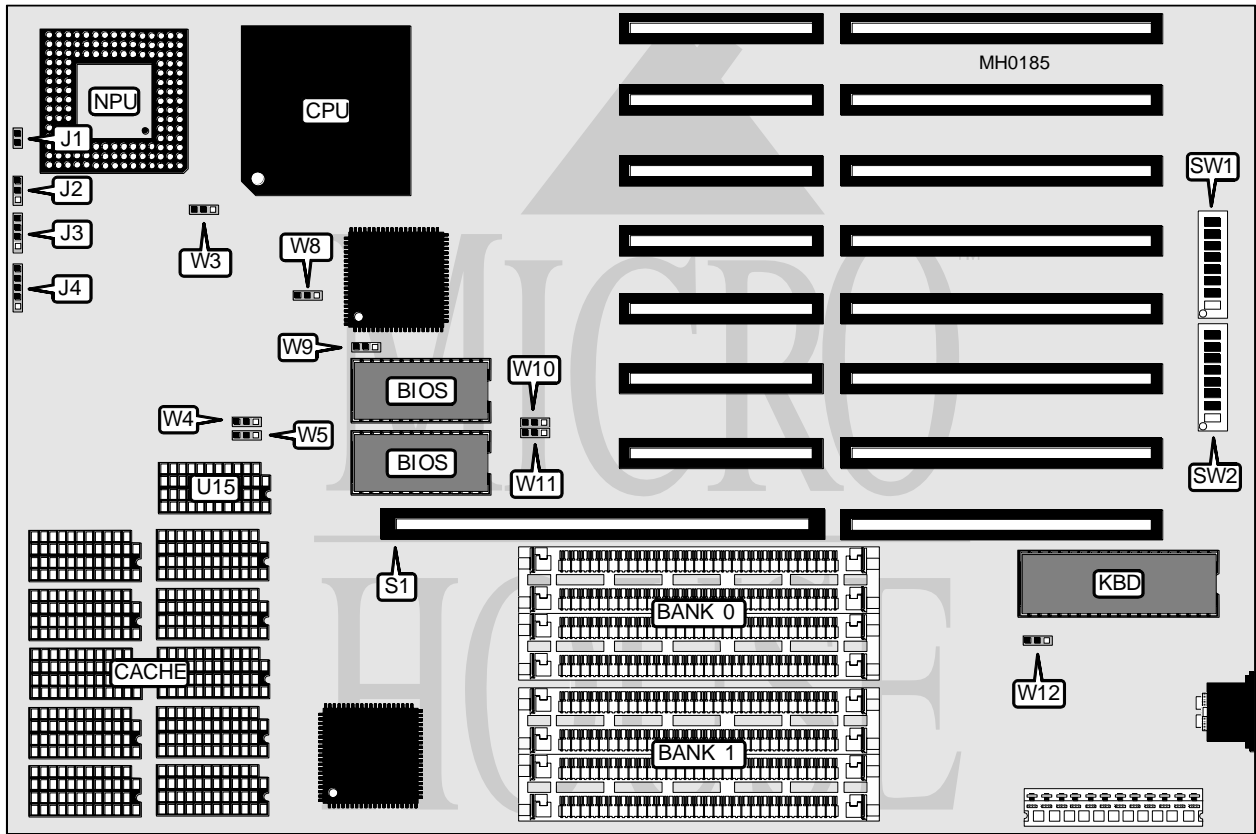


CLUB AMERICAN TECHNOLOGIES, INC.

EAGLE 400 SERIES

Processor	80486DX
Processor Speed	25/33MHz
Chip Set	VLSI
Max. Onboard DRAM	32MB
Cache	64/256KB
BIOS	AMI
Dimensions	330.2mm x 218.4mm
I/O Options	32-bit external memory card slot
NPU Options	4167



CONNECTIONS			
Purpose	Location	Purpose	Location
Reset switch	J1	Power LED & keylock	J4
Turbo LED	J2	32-bit external memory card	S1
Speaker	J3		

Continued on next page . . .

CLUB AMERICAN TECHNOLOGIES, INC.

EAGLE 400 SERIES

... continued from previous page

USER CONFIGURABLE SETTINGS		
Function	Jumper/Switch	Position
í Factory configured - do not alter	SW1/1	On
í Factory configured - do not alter	SW1/2	Off
í Factory configured - do not alter	SW2/1	On
í Factory configured - do not alter	SW2/2	On
í Shadow video BIOS enabled	SW2/3	On
Shadow video BIOS disabled	SW2/3	Off
í Factory configured - do not alter	SW2/4	Off
í Shadow system BIOS enabled	SW2/5	On
Shadow system BIOS disabled	SW2/5	Off
í Burst Mode enabled	SW2/6	On
Burst Mode disabled	SW2/6	Off
í Factory configured - do not alter	SW2/7	On
í Factory configured - do not alter	SW2/8	Off
í CPU speed switchable from keyboard	W3	pins 1 & 2 closed
CPU speed select fast	W3	Open
CPU speed select slow	W3	pins 2 & 3 closed
í Burst mode enabled	W4 & W5	pins 2 & 3 closed
Burst mode disabled	W4 & W5	pins 1 & 2 closed
í DMA speed select 8MHz	W8	pins 2 & 3 closed
DMA speed select 4MHz	W8	pins 1 & 2 closed
í BIOS type select 27512	W9	pins 1 & 2 closed
BIOS type select 27256	W9	pins 2 & 3 closed
í Monitor type select color	W12	pins 2 & 3 closed
Monitor type select monochrome	W12	pins 1 & 2 closed

CACHE CONFIGURATION		
Size	Bank 0	Dirty-Bit (U15)
64KB	(10) 16K x 4	(1) 16K x 4
256KB	(10) 64K x 4	NONE

CACHE SWITCH CONFIGURATION		
Size	SW1/3	SW1/4
64KB	Off	Off
256KB	On	On

Continued on next page ...

CLUB AMERICAN TECHNOLOGIES, INCORPORATED

EAGLE 400 SERIES

... continued from previous page

DRAM CONFIGURATION				
Size	Bank 0	Bank 1	Bank 2	Bank 3
1MB	(4) 256K x 9	NONE	NONE	NONE
2MB	(4) 256K x 9	(4) 256K x 9	NONE	NONE
4MB	(4) 1M x 9	NONE	NONE	NONE
6MB	(4) 256K x 9	(4) 256K x 9	(4) 1M x 9	NONE
8MB	(4) 1M x 9	(4) 1M x 9	NONE	NONE
10MB	(4) 256K x 9	(4) 256K x 9	(4) 1M x 9	(4) 1M x 9
12MB	(4) 1M x 9	(4) 1M x 9	(4) 1M x 9	NONE
16MB	(4) 1M x 9	(4) 1M x 9	(4) 1M x 9	(4) 1M x 9
16MB	(4) 4M x 9	NONE	NONE	NONE
24MB	(4) 1M x 9	(4) 1M x 9	(4) 4M x 9	NONE
32MB	(4) 4M x 9	(4) 4M x 9	NONE	NONE
40MB	(4) 1M x 9	(4) 1M x 9	(4) 4M x 9	(4) 4M x 9
48MB	(4) 1M x 9	(4) 1M x 9	(4) 4M x 9	(4) 4M x 9
64MB	(4) 4M x 9	(4) 4M x 9	(4) 4M x 9	(4) 4M x 9

Note: Banks 2 & 3 are utilized when a 32-bit external memory card is installed at S1.

DRAM JUMPER CONFIGURATION						
Size	SW1/5	SW1/6	SW1/7	SW1/8	W10	W11
1MB	On	On	On	On	pins 2 & 3 closed	pins 2 & 3 closed
2MB	On	Off	On	On	pins 2 & 3 closed	pins 2 & 3 closed
4MB	On	On	On	Off	pins 1 & 2 closed	pins 2 & 3 closed
6MB	Off	On	On	On	pins 1 & 2 closed	pins 2 & 3 closed
8MB	On	Off	On	Off	pins 1 & 2 closed	pins 2 & 3 closed
10MB	Off	Off	On	On	pins 2 & 3 closed	pins 2 & 3 closed
12MB	Off	On	On	Off	pins 1 & 2 closed	pins 2 & 3 closed
16MB	Off	Off	On	Off	pins 1 & 2 closed	pins 2 & 3 closed
16MB	On	On	Off	Off	pins 1 & 2 closed	pins 1 & 2 closed
24MB	Off	On	Off	On	pins 1 & 2 closed	pins 2 & 3 closed
32MB	On	Off	Off	Off	pins 1 & 2 closed	pins 1 & 2 closed
40MB	Off	Off	Off	On	pins 1 & 2 closed	pins 1 & 2 closed
48MB	Off	On	Off	Off	pins 1 & 2 closed	pins 1 & 2 closed
64MB	On	Off	Off	Off	pins 1 & 2 closed	pins 1 & 2 closed