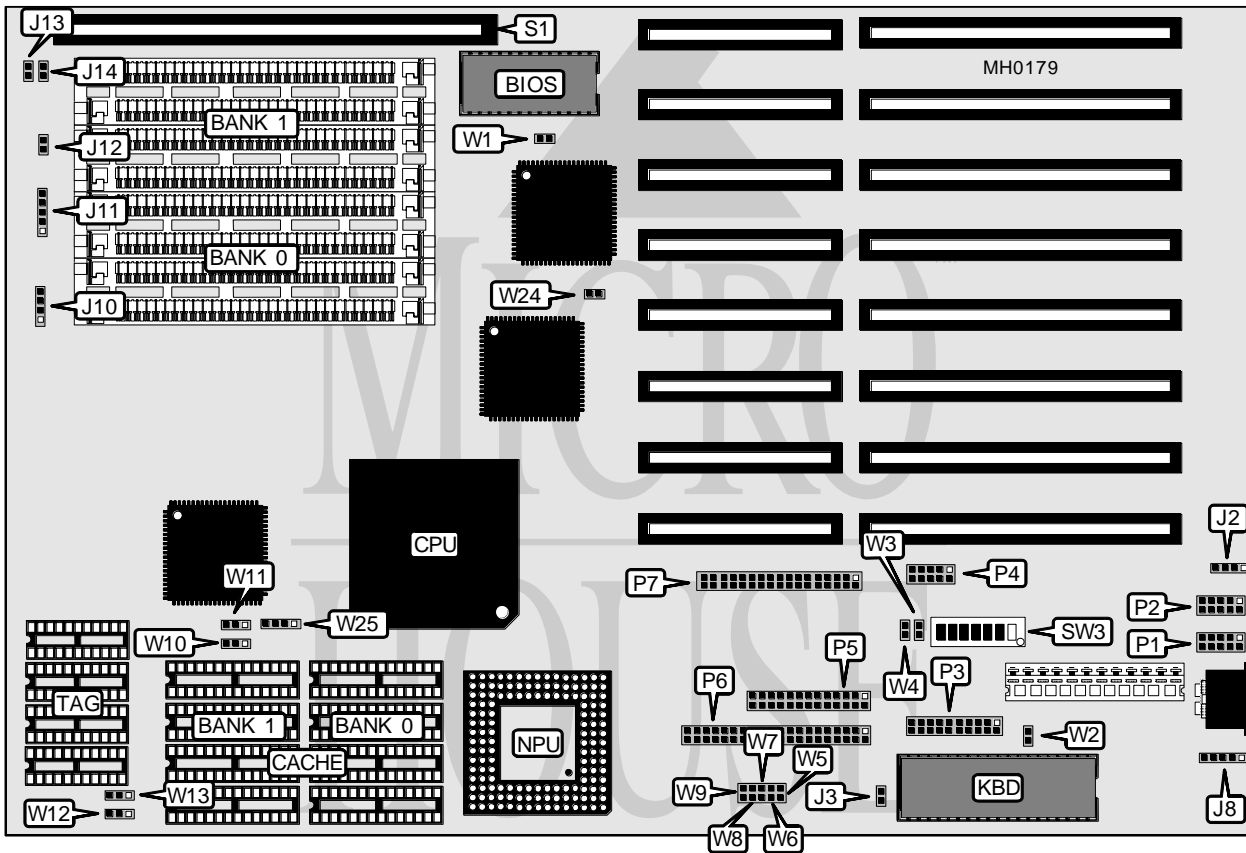


CACHE COMPUTERS, INC.

CACHE BAT 486 (MODEL 319)

Processor	80486SX/80486DX
Processor Speed	20/25/33/40/50MHz
Chip Set	UMC
Max. Onboard DRAM	32MB
Cache	64/128/256KB
BIOS	AMI/MR
Dimensions	330mm x 218mm
I/O Options	Serial ports (2), parallel port, game port, bus mouse port, floppy drive interface, IDE interface, 32-bit external memory card slot
NPU Options	4167



CONNECTIONS			
Purpose	Location	Purpose	Location
External battery	J2	Serial port COM1	P1
IDE LED	J3	Serial port COM2	P2
Auxiliary keyboard	J8	Game port	P3
Speaker	J10	Bus mouse port	P4
Power LED & keylock	J11	Parallel port	P5
Reset switch	J12	IDE interface	P6
Turbo switch	J13	Floppy drive interface	P7
Turbo LED	J14	32-bit external memory slot	S1

Continued on next page . . .

CACHE COMPUTERS, INC.

CACHE BAT 486 (MODEL 319)

... continued from previous page

USER CONFIGURABLE SETTINGS		
Function	Jumper/Switch	Position
í Floppy drive enabled	SW3/1	Off
Floppy drive disabled	SW3/1	On
í IDE interface enabled	SW3/2	Off
IDE interface disabled	SW3/2	On
í Serial port COM1 (P1) enabled	SW3/3	Off
Serial port COM1 (P1) disabled	SW3/3	On
í Serial port COM2 (P2) enabled	SW3/4	Off
Serial port COM2 (P2) disabled	SW3/4	On
í Game port enabled	SW3/5	Off
Game port disabled	SW3/5	On
í Parallel port enabled	SW3/6	Off
Parallel port disabled	SW3/6	On
í Bus mouse port enabled	SW3/7	Off
Bus mouse port disabled	SW3/7	On
í CMOS memory normal operation	W1	Open
CMOS memory clear	W1	Closed
í Monitor type select color (AMI BIOS)	W2	Open
Monitor type select monochrome (AMI BIOS)	W2	Closed
í Password enabled (MR BIOS)	W2	Open
Password disabled (MR BIOS)	W2	Closed
í Floppy drive interface address select 1F0-1F7h	W5	Open
Floppy drive interface address select 170-177h	W5	Closed
í IDE interface address select 3F1-3F7h	W6	Open
IDE interface address select 371-377h	W6	Closed
í Serial port (P1) select COM1 at address 3F8-3FFh	W7	Open
Serial port (P1) select COM3 at address 3E8-3EFh	W7	Closed
í Serial port (P2) select COM2 at address 2F8-2FFh	W8	Open
Serial port (P2) select COM4 at address 2E8-2EFh	W8	Closed
í Parallel port (P5) select LPT1 at address 378-37Fh	W9	Open
Parallel port (P5) select LPT2 at address 278-27Fh	W9	Closed

DRAM CONFIGURATION				
Size	Bank 0	Bank 1	Bank 2	Bank 3
1MB	(4) 256K x 9	NONE	NONE	NONE
2MB	(4) 256K x 9	(4) 256K x 9	NONE	NONE
3MB	(4) 256K x 9	(4) 256K x 9	(4) 256K x 9	NONE
4MB	(4) 256K x 9	(4) 256K x 9	(4) 256K x 9	(4) 256K x 9
4MB	(4) 1M x 9	NONE	NONE	NONE
5MB	(4) 256K x 9	(4) 1M x 9	NONE	NONE
6MB	(4) 256K x 9	(4) 256K x 9	(4) 1M x 9	NONE
7MB	(4) 256K x 9	(4) 256K x 9	(4) 256K x 9	(4) 1M x 9
8MB	(4) 1M x 9	(4) 1M x 9	NONE	NONE
9MB	(4) 256K x 9	(4) 1M x 9	(4) 1M x 9	NONE

Continued on next page . . .

CACHE COMPUTERS, INC.

CACHE BAT 486 (MODEL 319)

... continued from previous page

DRAM CONFIGURATION (CON'T)				
Size	Bank 0	Bank 1	Bank 2	Bank 3
10MB	(4) 256K x 9	(4) 256K x 9	(4) 1M x 9	(4) 1M x 9
12MB	(4) 1M x 9	(4) 1M x 9	(4) 1M x 9	NONE
16MB	(4) 1M x 9	(4) 1M x 9	(4) 1M x 9	(4) 1M x 9
16MB	(4) 4M x 9	NONE	NONE	NONE
17MB	(4) 256K x 9	(4) 4M x 9	NONE	NONE
18MB	(4) 256K x 9	(4) 256K x 9	(4) 4M x 9	NONE
20MB	(4) 1M x 9	(4) 4M x 9	NONE	NONE
24MB	(4) 1M x 9	(4) 1M x 9	(4) 4M x 9	NONE
28MB	(4) 1M x 9	(4) 1M x 9	(4) 1M x 9	(4) 4M x 9
32MB	(4) 4M x 9	(4) 4M x 9	NONE	NONE
36MB	(4) 1M x 9	(4) 4M x 9	(4) 4M x 9	NONE
40MB	(4) 1M x 9	(4) 1M x 9	(4) 4M x 9	(4) 4M x 9
48MB	(4) 4M x 9	(4) 4M x 9	(4) 4M x 9	NONE
52MB	(4) 1M x 9	(4) 4M x 9	(4) 4M x 9	(4) 4M x 9
64MB	(4) 4M x 9	(4) 4M x 9	(4) 4M x 9	(4) 4M x 9

Notes: Banks 2 and 3 are utilized when a 32-bit external memory card is installed at S1.

CACHE CONFIGURATION		
Size	Bank 0	Bank 1
64KB	(4) 8K x 8	(4) 8K x 8
128KB	(4) 32K x 8	NONE
256KB	(4) 32K x 8	(4) 32K x 8

CACHE JUMPER CONFIGURATION				
Size	W10	W11	W12	W13
64KB	pins 1 & 2 closed	pins 1 & 2 closed	pins 1 & 2 closed	pins 1 & 2 closed
128KB	pins 1 & 2 closed	pins 2 & 3 closed	pins 1 & 2 closed	pins 1 & 2 closed
256KB	pins 2 & 3 closed	pins 2 & 3 closed	pins 2 & 3 closed	pins 2 & 3 closed

CPU TYPE CONFIGURATION		
Type	W24	W25
80486SX	Closed	pins 2 & 3 closed
80486DX	Open	pins 1 & 2, 3 & 4 closed

BUS MOUSE IRQ CONFIGURATION		
IRQ	W3	W4
IRQ2	Closed	Open
IRQ5	Open	Closed
Disabled	Open	Open