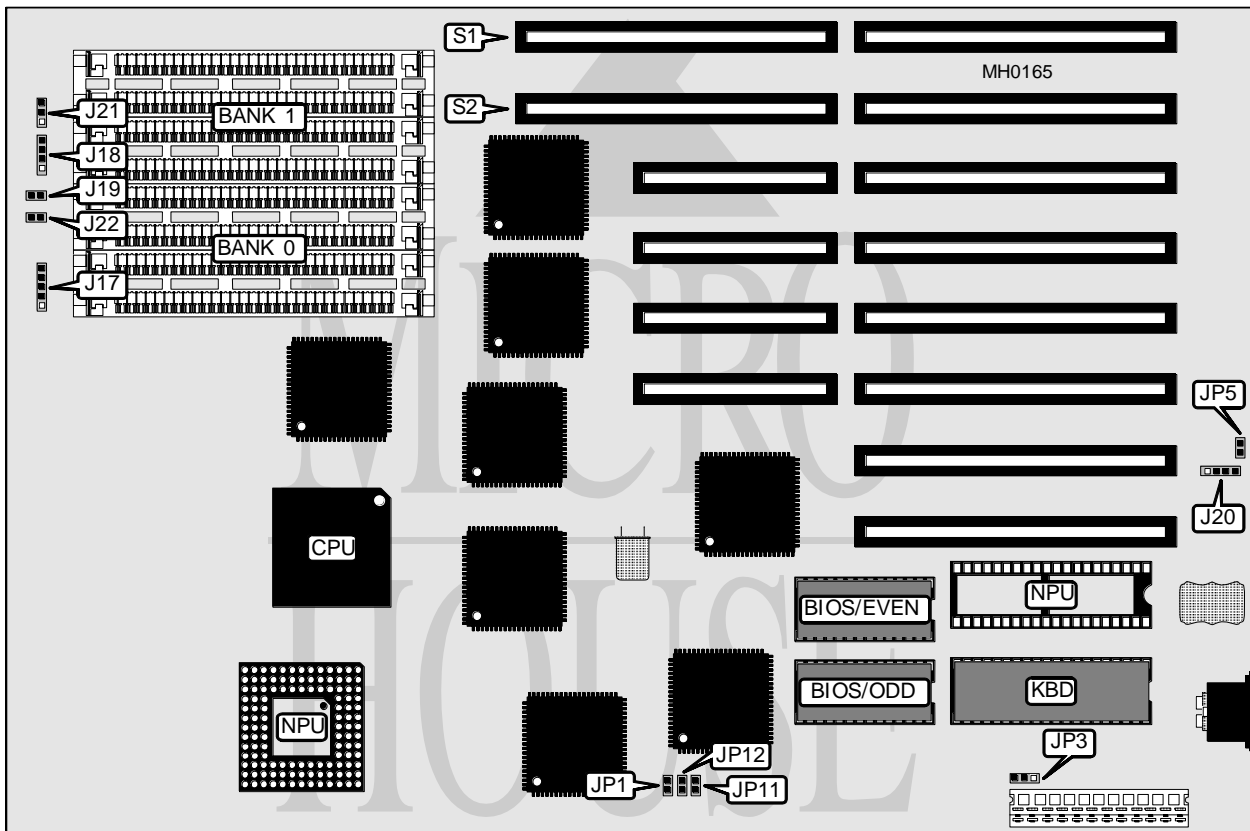


# SOYO COMPUTER CO., LTD.

## SY-013/SY-014

|                          |                                       |
|--------------------------|---------------------------------------|
| <b>Processor</b>         | 80386DX                               |
| <b>Processor Speed</b>   | 20/25MHz                              |
| <b>Chip Set</b>          | C & T                                 |
| <b>Max. Onboard DRAM</b> | 8MB                                   |
| <b>Cache</b>             | None                                  |
| <b>BIOS</b>              | AMI                                   |
| <b>Dimensions</b>        | 330.2mm x 218.4mm                     |
| <b>I/O Options</b>       | 32-bit external memory card slots (2) |
| <b>NPU Options</b>       | 80287/80387/3167                      |



| CONNECTIONS         |          |                             |          |
|---------------------|----------|-----------------------------|----------|
| Purpose             | Location | Purpose                     | Location |
| Power LED & keylock | J17      | Turbo switch                | J21      |
| Speaker             | J18      | Turbo LED                   | J22      |
| Reset switch        | J19      | 32-bit external memory card | S1       |
| External battery    | J20      | 32-bit external memory card | S2       |

Continued on next page . . .

**SOYO COMPUTER CO., LTD.**  
**SY-013/SY-014**

... continued from previous page

| USER CONFIGURABLE SETTINGS       |        |                   |
|----------------------------------|--------|-------------------|
| Function                         | Jumper | Position          |
| í Monitor type select monochrome | JP3    | pins 2 & 3 closed |
| Monitor type select color        | JP3    | pins 1 & 2 closed |
| í Battery select internal        | JP5    | Open              |
| Battery select external          | JP5    | Closed            |

| DRAM CONFIGURATION |              |              |
|--------------------|--------------|--------------|
| Size               | Bank 0       | Bank 1       |
| 1MB                | (4) 256K x 9 | NONE         |
| 2MB                | (4) 256K x 9 | (4) 256K x 9 |
| 4MB                | (4) 1M x 9   | NONE         |
| 8MB                | (4) 1M x 9   | (4) 1M x 9   |

| NPU JUMPER CONFIGURATION |        |        |        |
|--------------------------|--------|--------|--------|
| Type                     | JP1    | JP11   | JP12   |
| 80287                    | Closed | Open   | Open   |
| 80387                    | Open   | Closed | Closed |
| 3167                     | Open   | Open   | Closed |