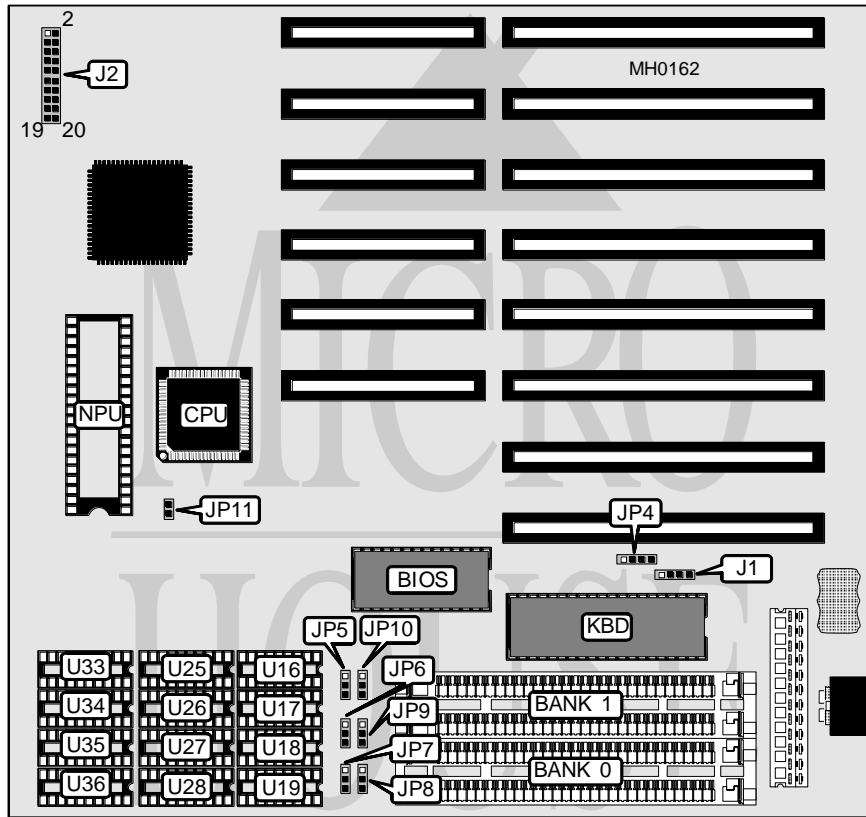


EISA TECH CORPORATION SINGLE-CHIP 286

Processor	80286
Processor Speed	12/16MHz
Chip Set	Acer
Max. Onboard DRAM	5MB
Cache	None
BIOS	AMI/Award
Dimensions	230mm x 215mm
I/O Options	None
NPU Options	80287



CONNECTIONS			
Purpose	Location	Purpose	Location
External battery	J1	Turbo switch	J2 pins 10 & 12 & 14
Keylock	J2 pins 1 & 3	Reset switch	J2 pins 18 & 20
Turbo LED	J2 pins 4 & 6	Speaker	J2 pins 13 & 15 & 17 & 19
Power LED	J2 pins 5 & 7 & 9		

Continued on next page . . .

EISA TECH CORPORATION

SINGLE-CHIP 286

... continued from previous page

USER CONFIGURABLE SETTINGS		
Function	Jumper	Position
í Monitor type select color	JP4	pins 3 & 4 closed
Monitor type select monochrome	JP4	pins 1 & 2 closed
NPX clock mode select CPU CLK/3	JP11	Closed
NPX clock mode select CPU CLK/1	JP11	Open

DRAM CONFIGURATION						
Size	U25 - U28	U17 & U19	U33 - U36	U16 & U18	Bank 0	Bank 1
512KB	(4) 44256	(2) 41256	NONE	NONE	NONE	NONE
512KB	NONE	NONE	NONE	NONE	(2) 256K x 9	NONE
1MB	(4) 44256	(2) 41256	(4) 44256	(2) 41256	NONE	NONE
1MB	NONE	NONE	NONE	NONE	(2) 256K x 9	(2) 256K x 9
2MB	(4) 44256	(2) 41256	(4) 44256	(2) 41256	(2) 256K x 9	(2) 256K x 9
2MB	NONE	NONE	NONE	NONE	(2) 1M x 9	NONE
4MB	NONE	NONE	NONE	NONE	(2) 1M x 9	(2) 1M x 9
5MB	(4) 44256	(2) 41256	(4) 44256	(2) 41256	(2) 1M x 9	(2) 1M x 9

Note: Either DIP (U17,U19,U25,U26,U27,U28) or SIMM may be used as Bank 0.

DRAM JUMPER CONFIGURATION						
Size	JP5	JP6	JP7	JP8	JP9	JP10
512KB	1 & 2	1 & 2	1 & 2	1 & 2	1 & 2	1 & 2
512KB	2 & 3	2 & 3	2 & 3	2 & 3	2 & 3	2 & 3
1MB	1 & 2	1 & 2	1 & 2	1 & 2	1 & 2	1 & 2
1MB	2 & 3	2 & 3	2 & 3	2 & 3	2 & 3	2 & 3
2MB	1 & 2	1 & 2	1 & 2	1 & 2	1 & 2	1 & 2
2MB	2 & 3	2 & 3	2 & 3	2 & 3	2 & 3	2 & 3
4MB	2 & 3	2 & 3	2 & 3	2 & 3	2 & 3	2 & 3
5MB	1 & 2	1 & 2	1 & 2	1 & 2	1 & 2	1 & 2

Note: Pins designated should be in the closed position.