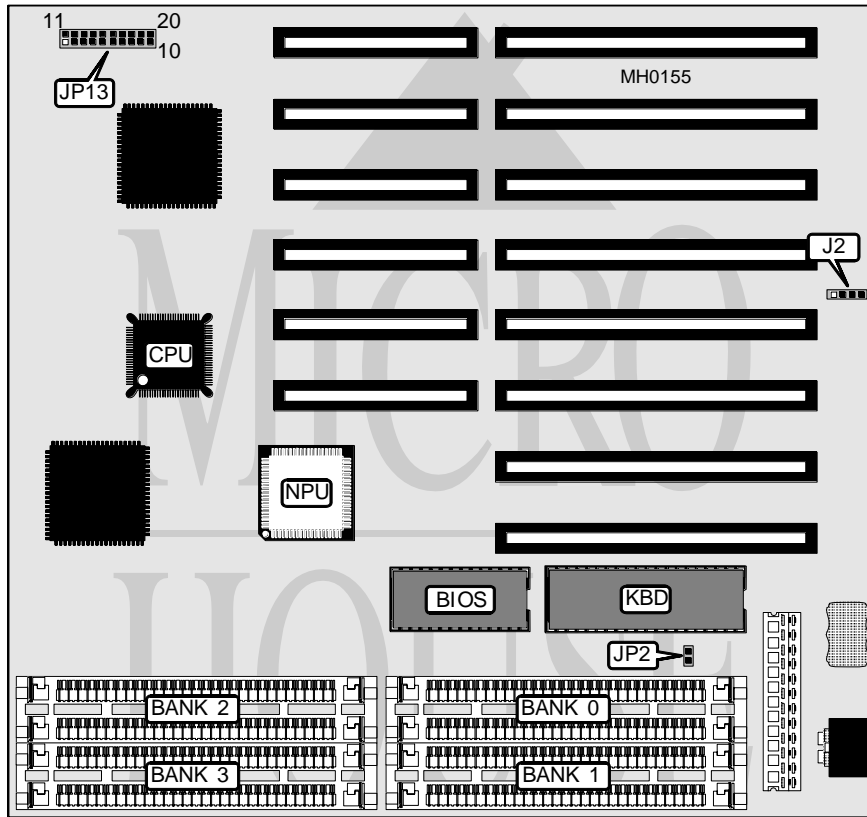


AREA ELECTRONICS SYSTEMS, INC.

SUPER P9

Processor	80386SX
Processor Speed	16/20/25MHz
Chip Set	VLSI
Max. Onboard DRAM	32MB
Cache	None
BIOS	AMI
Dimensions	230mm x 215mm
I/O Options	None
NPU Options	80387SX



CONNECTIONS			
Purpose	Location	Purpose	Location
External battery	J2 pins 1 & 4	Speaker	JP13 pins 7 - 10
Keylock	JP13 pins 1 & 2	Turbo LED	JP13 pins 12 & 13
Power LED	JP13 pins 3 & 5	Reset switch	JP13 pins 19 & 20

Continued on next page . . .

AREA ELECTRONICS SYSTEMS, INC.

SUPER P9

... continued from previous page

USER CONFIGURABLE SETTINGS		
Function	Jumper	Position
í Battery select internal	J2	pins 2 & 3 closed
Battery select external	J2	Closed
CMOS memory clear	J2	pins 3 & 4 closed
í Monitor type select color	JP2	Closed
Monitor type select monochrome	JP2	Open
í CPU speed select fast	JP13	pins 16 & 17 closed
CPU speed select slow	JP13	pins 15 & 16 closed

DRAM CONFIGURATION				
Size	Bank 0	Bank 1	Bank 2	Bank 3
512KB	(2) 256K x 9	NONE	NONE	NONE
1MB	(2) 256K x 9	(2) 256K x 9	NONE	NONE
1.5MB	(2) 256K x 9	(2) 256K x 9	(2) 256K x 9	NONE
2MB	(2) 256K x 9	(2) 256K x 9	(2) 256K x 9	(2) 256K x 9
2MB	(2) 1M x 9	NONE	NONE	NONE
2.5MB	(2) 256K x 9	(2) 1M x 9	NONE	NONE
3MB	(2) 256K x 9	(2) 256K x 9	(2) 1M x 9	NONE
4MB	(2) 1M x 9	(2) 1M x 9	NONE	NONE
4.5MB	(2) 1M x 9	(2) 1M x 9	(2) 256K x 9	NONE
5MB	(2) 256K x 9	(2) 256K x 9	(2) 1M x 9	(2) 1M x 9
6MB	(2) 1M x 9	(2) 1M x 9	(2) 1M x 9	NONE
8MB	(2) 1M x 9	(2) 1M x 9	(2) 1M x 9	(2) 1M x 9
8MB	(2) 4M x 9	NONE	NONE	NONE
8.5MB	(2) 256K x 9	(2) 4M x 9	NONE	NONE
9MB	(2) 256K x 9	(2) 256K x 9	(2) 4M x 9	NONE
10MB	(2) 1M x 9	(2) 4M x 9	NONE	NONE
12MB	(2) 1M x 9	(2) 1M x 9	(2) 4M x 9	NONE
16MB	(2) 4M x 9	(2) 4M x 9	NONE	NONE
16.5MB	(2) 4M x 9	(2) 4M x 9	(2) 256K x 9	NONE
17MB	(2) 256K x 9	(2) 256K x 9	(2) 4M x 9	(2) 4M x 9
18MB	(2) 4M x 9	(2) 4M x 9	(2) 1M x 9	NONE
20MB	(2) 1M x 9	(2) 1M x 9	(2) 4M x 9	(2) 4M x 9
24MB	(2) 4M x 9	(2) 4M x 9	(2) 4M x 9	NONE
32MB	(2) 4M x 9	(2) 4M x 9	(2) 4M x 9	(2) 4M x 9