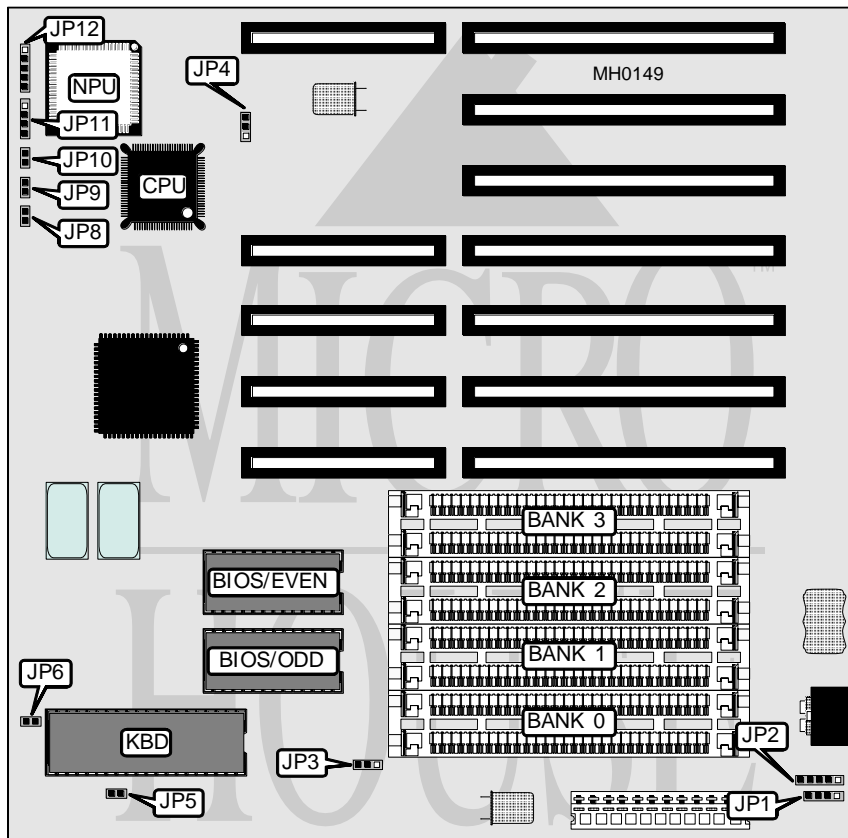


# ABC COMPUTER COMPANY, LTD.

## A 3 8 8 9

<b>Processor</b>	80386SX
<b>Processor Speed</b>	25MHz
<b>Chip Set</b>	Headland
<b>Max. Onboard DRAM</b>	8MB
<b>Cache</b>	None
<b>BIOS</b>	AMI
<b>Dimensions</b>	225mm x 220mm
<b>I/O Options</b>	Auxiliary keyboard connector
<b>NPU Options</b>	80387SX



CONNECTIONS			
Purpose	Location	Purpose	Location
External battery	JP1	Turbo switch	JP10
Auxiliary keyboard connector	JP2	Speaker	JP11
Turbo LED	JP8	Power LED & keylock	JP12
Reset switch	JP9		

Continued on next page . . .

## ABC COMPUTER COMPANY, LTD.

A 3 8 8 9

... continued from previous page

USER CONFIGURABLE SETTINGS		
Function	Jumper	Position
í BIOS type select 27256	JP3	pins 1 & 2 closed
BIOS type select 27128	JP3	pins 2 & 3 closed
í Pipeline mode enabled	JP4	pins 1 & 2 closed
Pipeline mode disabled	JP4	pins 2 & 3 closed
í Monitor type select monochrome	JP5	Open
Monitor type select color	JP5	Closed
í CMOS memory normal operation	JP6	Open
CMOS memory clear	JP6	Closed

DRAM CONFIGURATION				
Size	Bank 0	Bank 1	Bank 2	Bank 3
512KB	(2) 256K x 9	NONE	NONE	NONE
1MB	(2) 256K x 9	(2) 256K x 9	NONE	NONE
1.5MB	(2) 256K x 9	(2) 256K x 9	(2) 256K x 9	NONE
2MB	(2) 256K x 9	(2) 256K x 9	(2) 256K x 9	(2) 256K x 9
2MB	(2) 1M x 9	NONE	NONE	NONE
3MB	(2) 256K x 9	(2) 256K x 9	(2) 1M x 9	NONE
4MB	(2) 1M x 9	(2) 1M x 9	NONE	NONE
4.5MB	(2) 1M x 9	(2) 1M x 9	(2) 256K x 9	NONE
5MB	(2) 256K x 9	(2) 256K x 9	(2) 1M x 9	(2) 1M x 9
6MB	(2) 1M x 9	(2) 1M x 9	(2) 1M x 9	NONE
8MB	(2) 1M x 9	(2) 1M x 9	(2) 1M x 9	(2) 1M x 9