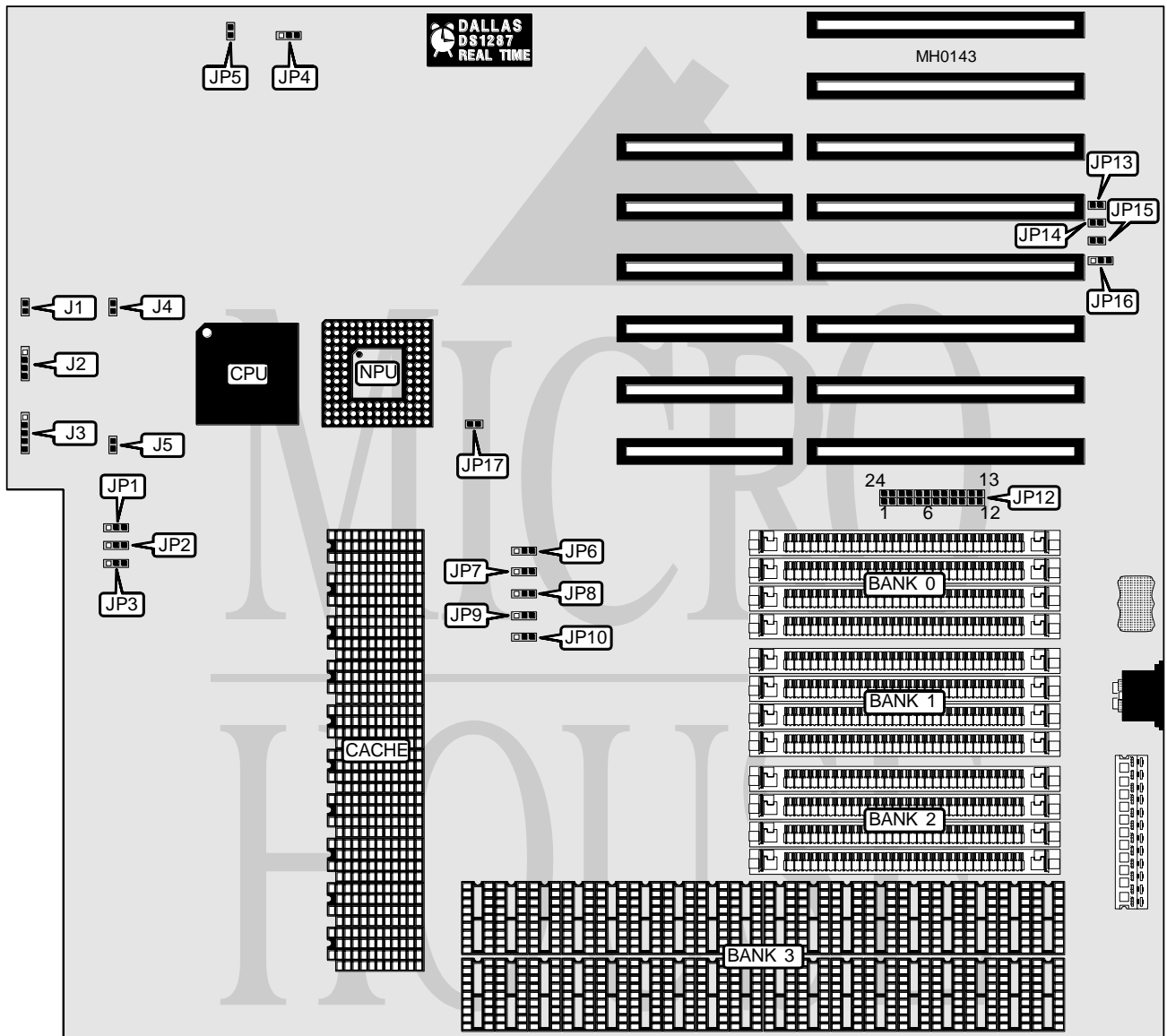


# FUJIKAMA USA, INC.

## 80386 CACHE SYSTEM

<b>Processor</b>	80386DX
<b>Processor Speed</b>	25/33MHz
<b>Chip Set</b>	C & T
<b>Max. Onboard DRAM</b>	16MB
<b>Cache</b>	64/256KB
<b>BIOS</b>	AMI
<b>Dimensions</b>	355mm x 304mm
<b>I/O Options</b>	None
<b>NPU Options</b>	80387/3167



Continued on next page . . .

# FUJIKAMA USA, INC.

## 80386 CACHE SYSTEM

... continued from previous page

CONNECTIONS			
Purpose	Location	Purpose	Location
Turbo switch	J1	Turbo LED	J4
Speaker	J2	Reset switch	J5
Power LED & keylock	J3		

USER CONFIGURABLE SETTINGS		
Function	Jumper	Position
í Bus (8-bit) speed select 7 wait states	JP1	pins 1 & 2 closed
Bus (8-bit) speed select 5 wait states	JP1	pins 2 & 3 closed
í Bus (16-bit) speed select 5 wait states	JP2	pins 2 & 3 closed
Bus (16-bit) speed select 3 wait states	JP2	pins 1 & 2 closed
í Bus speed select 6/8MHz	JP3	pins 2 & 3 closed
Bus speed select 12/16MHz	JP3	pins 1 & 2 closed
í Monitor type select monochrome	JP4	pins 2 & 3 closed
Monitor type select color	JP4	pins 1 & 2 closed
í NPU disabled	JP5	Open
NPU enabled	JP5	Closed
í NPU mode select synchronous	JP17	Open
NPU mode select asynchronous	JP17	Closed

DRAM CONFIGURATION				
Size	Bank 0	Bank 1	Bank 2	Bank 3
1MB	(4) 256K x 9	NONE	NONE	NONE
2MB	(4) 256K x 9	(4) 256K x 9	NONE	NONE
3MB	(4) 256K x 9	(4) 256K x 9	(4) 256K x 9	NONE
4MB	(4) 1M x 9	NONE	NONE	NONE
4MB	NONE	NONE	NONE	(36) 411000
5MB	(4) 256K x 9	(4) 1M x 9	NONE	NONE
7MB	(4) 256K x 9	(4) 256K x 9	(4) 256K x 9	(36) 411000
8MB	(4) 1M x 9	(4) 1M x 9	NONE	NONE
8MB	(4) 1M x 9	NONE	NONE	(36) 411000
9MB	(4) 1M x 9	(4) 1M x 9	(4) 256K x 9	NONE
9MB	(4) 1M x 9	(4) 256K x 9	NONE	(36) 411000
10MB	(4) 1M x 9	(4) 256K x 9	(4) 256K x 9	(36) 411000
12MB	(4) 1M x 9	(4) 1M x 9	(4) 1M x 9	NONE
12MB	(4) 1M x 9	(4) 1M x 9	NONE	(36) 411000
16MB	(4) 1M x 9	(4) 1M x 9	(4) 1M x 9	(36) 411000

Continued on next page . . .

# FUJIKAMA USA, INC.

## 80386 CACHE SYSTEM

... continued from previous page

DRAM JUMPER CONFIGURATION								
Size	JP8	JP9	JP10	JP12	JP13	JP14	JP15	JP16
1MB	2 & 3	N/A	N/A	Setting 1	Closed	Closed	Closed	Closed
2MB	2 & 3	2 & 3	N/A	Setting 1	Closed	Closed	Closed	Open
3MB	2 & 3	2 & 3	2 & 3	Setting 1	Closed	Closed	Open	Closed
4MB	1 & 2	N/A	N/A	Setting 1	Closed	Closed	Open	Open
4MB	N/A	N/A	N/A	Setting 2	Closed	Closed	Open	Open
5MB	2 & 3	1 & 2	N/A	Setting 1	Closed	Open	Closed	Closed
7MB	2 & 3	2 & 3	2 & 3	Setting 1	Closed	Open	Closed	Open
8MB	1 & 2	1 & 2	N/A	Setting 1	Closed	Open	Open	Closed
8MB	N/A	1 & 2	N/A	Setting 2	Closed	Open	Open	Closed
9MB	1 & 2	1 & 2	2 & 3	Setting 1	Closed	Open	Open	Open
9MB	N/A	1 & 2	2 & 3	Setting 2	Closed	Open	Open	Open
10MB	2 & 3	1 & 2	2 & 3	Setting 2	Open	Closed	Closed	Closed
12MB	1 & 2	1 & 2	1 & 2	Setting 1	Open	Closed	Closed	Open
12MB	N/A	1 & 2	1 & 2	Setting 2	Open	Closed	Closed	Open
16MB	1 & 2	1 & 2	1 & 2	Setting 1	Open	Closed	Open	Closed

Note: Setting 1=Pins 1 & 2, 3 & 4, 5 & 6, 7 & 8, 9 & 10, 11 & 12, 13 & 14, 15 & 16, 17 & 18, 19 & 20, 21 & 22, 23 & 24 closed.  
Setting 2=Pins 1 & 24, 2 & 23, 3 & 22, 4 & 21, 5 & 20, 6 & 19, 7 & 18, 8 & 17, 9 & 16, 10 & 15, 11 & 14, 12 & 13 closed

CACHE CONFIGURATION	
Size	Bank 0
64KB	(10) 16K x 4
256KB	(10) 64K x 4

CACHE JUMPER CONFIGURATION		
Size	JP6	JP7
64KB	pins 1 & 2 closed	pins 1 & 2 closed
256KB	pins 2 & 3 closed	pins 2 & 3 closed