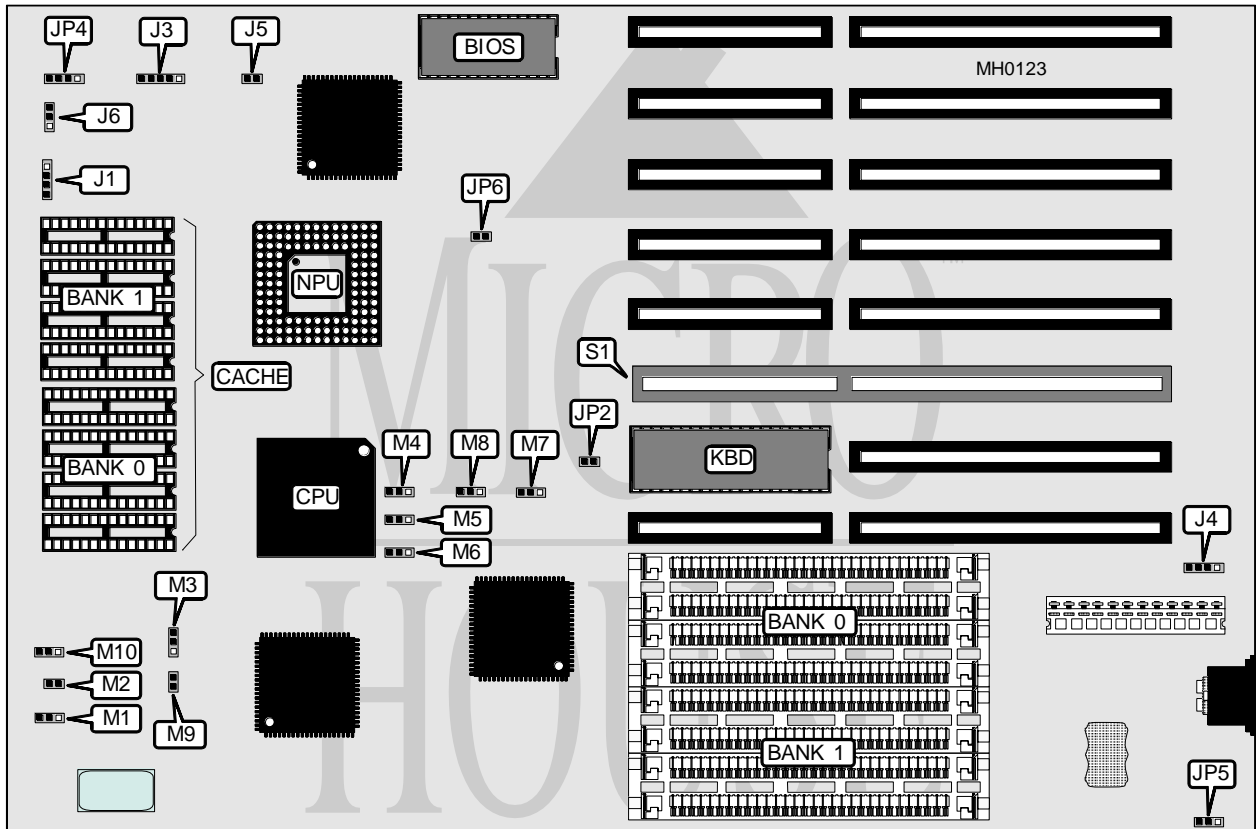


# ADVANCED INTEGRATION RESEARCH, INC.

## 386A-40/33/25 (386AS)

<b>Processor</b>	80386DX
<b>Processor Speed</b>	25/33/40MHz
<b>Chip Set</b>	C & T
<b>Max. Onboard DRAM</b>	32MB
<b>Cache</b>	32/64/128/256KB
<b>BIOS</b>	AMI/Phoenix
<b>Dimensions</b>	330.2mm x 218.4mm
<b>I/O Options</b>	32-bit external memory card slot
<b>NPU Options</b>	80387/3167



CONNECTIONS			
Purpose	Location	Purpose	Location
Speaker	J1	Turbo switch	J6
Power LED & keylock	J3	Turbo LED	JP4
External battery	J4	32-bit external memory card	S1
Reset switch	J5		

Continued on next page . . .

**ADVANCED INTEGRATION RESEARCH, INC.**  
**386A-40/33/25 (386AS)**

... continued from previous page

USER CONFIGURABLE SETTINGS		
Function	Jumper	Position
í Monitor type select color	JP2	Open
Monitor type select monochrome	JP2	Closed
í Battery select internal	JP5	pins 2 & 3 closed
Battery select external	JP5	pins 1 & 2 closed
í NPU disabled	JP6	Closed
NPU enabled	JP6	Open

DRAM CONFIGURATION		
Size	Bank 0	Bank 1
1MB	(4) 256K x 9	NONE
2MB	(4) 256K x 9	(4) 256K x 9
4MB	(4) 1M x 9	NONE
5MB	(4) 1M x 9	(4) 256K x 9
8MB	(4) 1M x 9	(4) 1M x 9
16MB	(4) 4M x 9	NONE
17MB	(4) 4M x 9	(4) 256K x 9
20MB	(4) 4M x 9	(4) 1M x 9
32MB	(4) 4M x 9	(4) 4M x 9

CACHE CONFIGURATION		
Size	Bank 0	Bank 1
32KB	(4) 8K x 8	NONE
64KB	(4) 8K x 8	(4) 8K x 8
128KB	(4) 32K x 8	NONE
256KB	(4) 32K x 8	(4) 32K x 8

CACHE JUMPER CONFIGURATION										
Size	M1	M2	M3	M4	M5	M6	M7	M8	M9	M10
32KB	1 & 2	Open	1 & 2	1 & 2	1 & 2	1 & 2	1 & 2	1 & 2	Open	Open
64KB	1 & 2	Closed	1 & 2	2 & 3	1 & 2	1 & 2	Open	1 & 2	Open	1 & 2
128KB	1 & 2	Closed	2 & 3	2 & 3	2 & 3	1 & 2	2 & 3	1 & 2	Closed	Open
256KB	2 & 3	Closed	2 & 3	2 & 3	2 & 3	2 & 3	Open	2 & 3	Closed	2 & 3

Note: Pins designated should be in the closed position.